

# Crime in McAllen

## 2010



**The City of McAllen Crime Report**



McAllen Police Department  
Crime Records Office

# **Crime in McAllen 2010**

**McAllen Police Department**

**Victor Rodriguez**

**Chief of Police**

**Support Services Division**

**Director**

**Capt. Irene Luna**

**Crime Records Office**

**Sgt. Esmeralda Guerra**

**Irma L. Gutierrez**

**Crime Statistician**

**For inquiries regarding this report you may call the Crime Records  
Office at (956) 681-2083.**

## Acknowledgements

*This report on Crime in McAllen was compiled from data submitted to the Crime Records Office by members of the McAllen Police Department and from data generated from calls for service.*

*This report is modeled after the Texas Department of Public Safety Annual Crime in Texas report. As such, format, crime analysis, and definitions have been similarly established in this report.*

# Table of Contents

<b>Chapter One –City of McAllen Crime Analysis.....</b>	<b>1</b>
<b>Chapter Two - Crime Trends and Analysis.....</b>	<b>2</b>
Violent and Property Crimes .....	4
Stolen/Recovered Property.....	5
Crime Clock.....	6
Crime in McAllen 2000-2010.....	7
McAllen: Crime Facts at a Glance 2010 .....	8
<b>Chapter Three – Index Crime Analysis</b>	
Murder.....	10
Rape.....	11
Robbery.....	13
Aggravated Assault.....	15
Burglary.....	17
Larceny/Theft.....	19
Motor Vehicle Theft.....	22
<b>Chapter Four – Selected Non-Index Crimes</b>	
Driving While Intoxicated Arrests.....	25
Drug Abuse Arrests.....	26
Drug Seizures.....	27
Weapons Arrests.....	28
<b>Chapter Five – Calls for Service</b>	
Calls for Service Time Clock.....	30
Calls for Service 2010 by percentage .....	31
Calls for Service 2010 by hour .....	32
<b>Chapter Six – Law Enforcement Personnel.....</b>	<b>34</b>
<b>Chapter Seven – McAllen Arrest Data.....</b>	<b>36</b>
<b>Appendices.....</b>	<b>43</b>
<b>Glossary of Terms.....</b>	<b>44</b>

# City of McAllen Crime Analysis

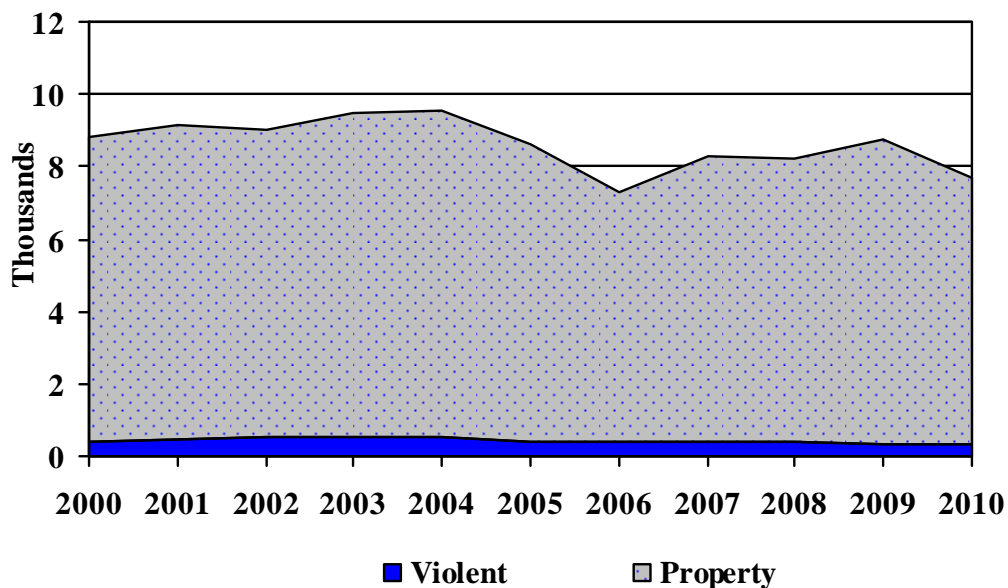
## Crime Measurements

The City of McAllen Police Department participates in the Uniform Crime Reporting (UCR) Program. UCR makes possible measurement and analysis of crime index.

## Crime Index

Uniform Crime Reporting is the reporting of seven index crimes. The crimes in this group are all serious, either by their nature or because of the frequency of their occurrence. These crimes can be categorized as violent crimes or property crimes. Violent crimes include murder, forcible rape, robbery, and aggravated assault. Property crimes include burglary, larceny-theft, and motor vehicle theft.

Index Crimes 2000 - 2010



## Crime Trends

Crime trends are analyzed using two separate methods, crime volume and crime rates.

Crime volume is the collective sum of the seven indexed crimes.

By comparing the volume of indexed crimes from year to year, trends can be evaluated.

Crime rates, on the other hand, are compiled to compensate for the changes in population and show the number of people affected by crime in a given population.

Crime rates are usually expressed in the number of crimes per 100,000 residents.

## Crime Volume

During the calendar year 2010, there was a total of 7697 index offenses in the City of McAllen. The crime index decreased 8.1 percent when compared to 2009.

McAllen Crime Volume by Offense				
	Offense	2010	2009	%
Violent Crimes	Murder	5	4	25.0%
	Rape	14	20	-30%
	Robbery	115	132	-12.9%
	Aggravated Assault	166	194	-14.4%
	<b>Violent Crime Totals</b>	<b>300</b>	<b>350</b>	<b>-14.3%</b>
Property Crimes	Burglary	711	797	-10.8%
	Theft	6282	6785	-7.4%
	Motor Vehicle Theft	404	441	-8.4%
	<b>Property Crimes Totals</b>	<b>7397</b>	<b>8023</b>	<b>-7.8%</b>
<b>Index Crime Totals</b>		<b>7697</b>	<b>8373</b>	<b>-8.1%</b>

## Crime Rate

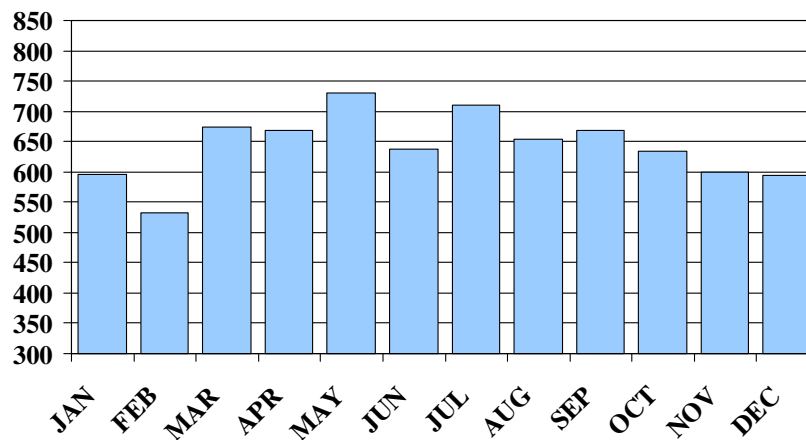
During the calendar year 2010, McAllen's crime rate was 5609.08 crimes per 100,000 persons. The crime rate decreased by 8.1 percent.

McAllen Crime Rate by Offense				
	Offense	2010	2009	% Change
Violent Crimes	Murder	3.64	2.91	25.2%
	Rape	10.20	14.57	-30%
	Robbery	83.80	96.19	-12.9%
	Aggravated Assault	120.97	141.37	-14.4%
	<b>Violent Crime Totals</b>	<b>218.62</b>	<b>255.06</b>	<b>-14.3%</b>
Property Crimes	Burglary	518.13	580.80	-10.8%
	Theft	4577.92	4944.47	-7.4%
	Motor Vehicle Theft	294.41	321.37	-8.4%
	<b>Property Crimes Totals</b>	<b>5390.46</b>	<b>5846.64</b>	<b>-7.8%</b>
<b>Index Crime Totals</b>		<b>5609.08</b>	<b>6101.70</b>	<b>-8.1%</b>

## Annual Crime Trends

The highest month for crime was May with 731 Part 1 crimes reported. The lowest month of reported crime for 2010 was February with 532 Part 1 crimes reported.

**Index Crimes By Month 2010**

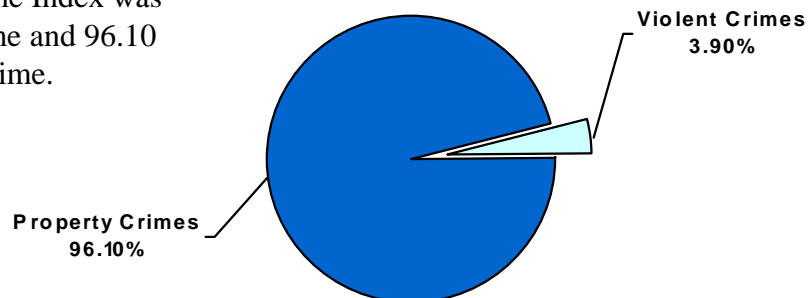


---

## Type of Crime

Crime analysis looks at the two categories of crime mentioned before: Violent crimes (or crimes against persons) and property crimes. In 2010, 3.90 percent of the Crime Index was made up of Violent crime and 96.10 percent was Property crime.

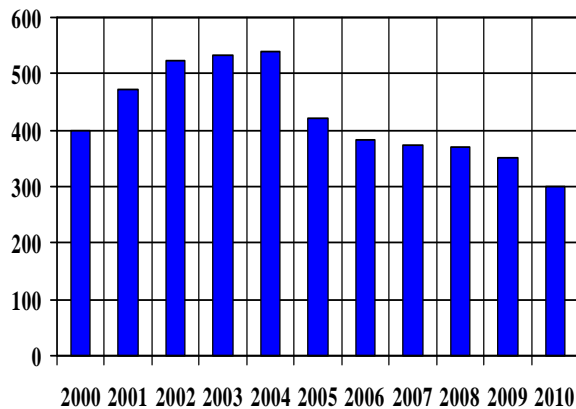
**Type of Crime in McAllen 2010**



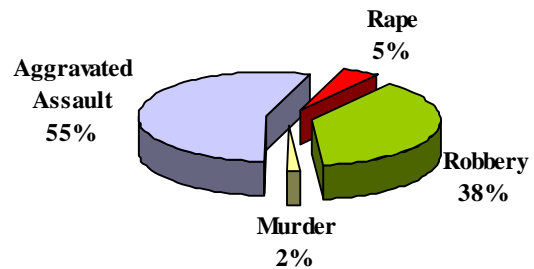
## Violent Crimes

Violent Crimes involve the element of personal confrontation between the perpetrator and the victim. Because of their nature, violent crimes are considered to be more serious than property crimes. 300 Violent crimes occurred during 2010, which is a decrease of 14.3 percent from 2009. The Violent crime rate for 2010 was 218.62 crimes per 100,000 residents, which was a decrease of 14.3 percent from 2009.

Violent Crimes 2000-2010



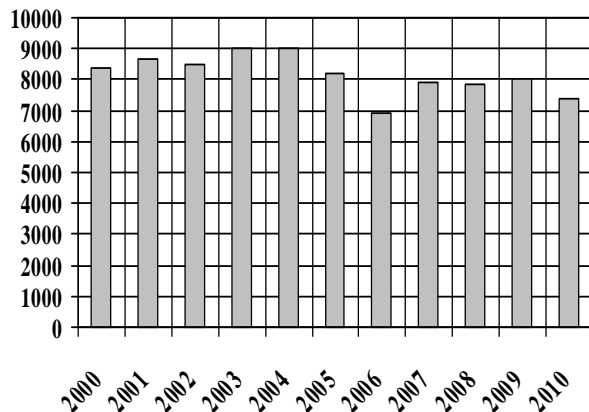
Violent Crime by Offense 2010



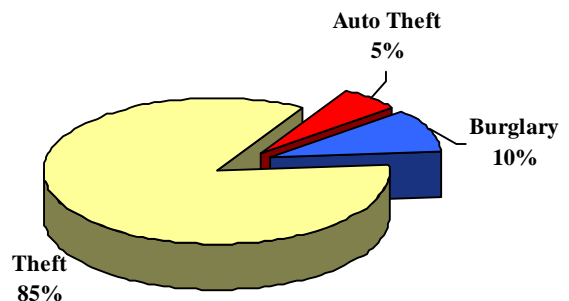
## Property Crimes

The number of property crimes occurring during 2010 was 7397. Property crimes decreased by 7.8 percent from 2009. Theft accounted for 85 percent of the property crime, followed by burglary at 10 percent, and then auto theft at 5 percent. The 2010 crime rate was 5390.46 property crimes per 100,000 citizens. This was a decrease of 7.8 percent when compared to 2009.

Property Crimes 2000-2010



Property Crime by Offense 2010

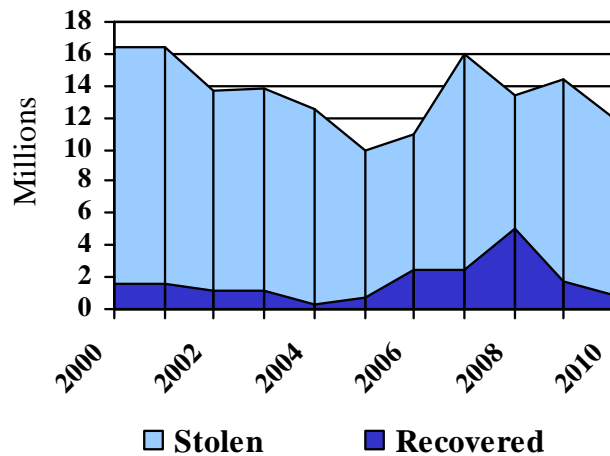




## Stolen Property Value

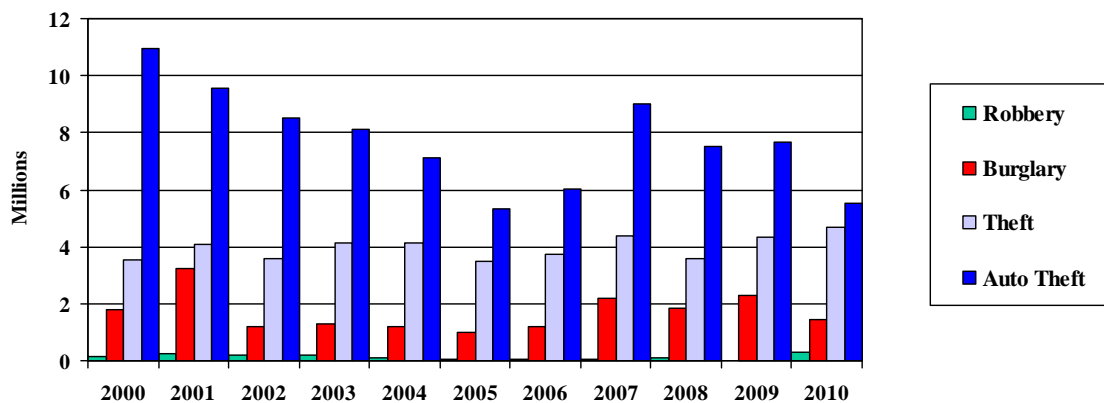
The total value of property stolen during 2010 in the City of McAllen was \$11,961,270. The amount stolen in 2009 was \$ 14,437,337. This represents an decrease of 17.2%.

### Total Property Lost: 2000-2010



Stolen Property by Type, Value and Total Recovered 2010		
Property Type	Stolen Value	Recovered
Currency	\$239,458	\$33,951
Jewelry	\$735,914	\$18,430
Clothing	\$254,868	\$91,647
Motor Vehicles	\$5,526,756	\$322,145
Office Equipment	\$513,448	\$19,142
Television, Stereos, etc.	\$683,398	\$21,720
Firearms	\$38,055	\$699
Household Goods	\$45,630	\$139
Consumable Goods	\$153,207	\$3,389
Livestock	\$1,820	\$0
Miscellaneous	\$3,768,716	\$356,898
Total	\$11,961,270	\$868,160

## Property Value Lost to Crime: 2000-2010



# McAllen Index Crime Clock 2010

## INDEX CRIME OFFENSE

Every 1.14 Hours

One

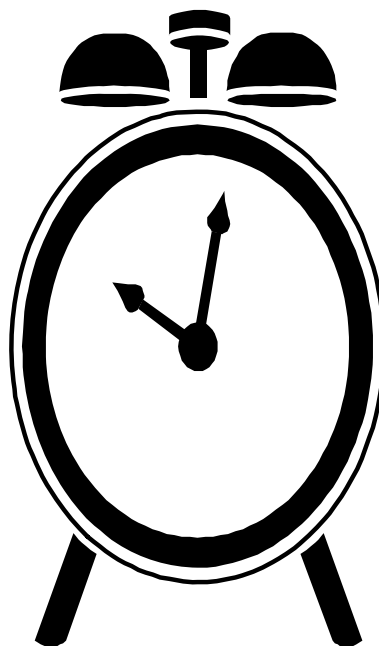
### VIOLENT CRIME

Every 29.20 Hours

One

### PROPERTY CRIME

Every 1.19 Hours



One

### MURDER

Every 73 Days

One

### BURGLARY

Every 12.32 Hours

One

### RAPE

Every 26.7 Days

One

### THEFT

Every 1.40 Hours

One

### ROBBERY

Every 3.18 Days

One

### MOTOR VEHICLE

### THEFT

Every 21.69 Hours

One

### AGGRAVATED ASSAULT

Every 2.20 Days

This mode of display represents the annual ratio of crime to fixed time intervals.

This is an aggregate representation of UCR data which is designed to convey the annual reported crime experience by showing the relative frequency of occurrence of the Index Offenses.

# Crime in McAllen

## Comparison of Index Crimes for the Past Ten Years

Year	Pop.*	Index	Murder	Rape	Robbery	Aggravated Assault	Burglary	Larceny / Theft	Motor Vehicle Theft	Total
2001*	116,793	Volume	4	9	120	340	1604	6364	706	9147
		Rate	3.42	7.71	102.75	291.11	1373.37	5448.95	604.49	7831.8
2002*	116,793	Volume	5	12	179	330	1049	6739	672	8986
		Rate	4.3	10.3	153.3	282.6	898.2	5770	575.4	7693.1
2003*	116,952	Volume	6	29	145	353	916	7430	655	9534
		Rate	5.1	17.1	124	301.8	783.2	6353	535.5	8152.1
2004**	120,109	Volume	4	22	154	360	1004	7361	649	9554
		Rate	3.33	18.26	127.82	298.8	833.32	6109.63	538.67	7929.82
2005**	123,352	Volume	8	34	129	250	734	6877	576	8608
		Rate	6.48	27.54	104.49	202.5	594.54	5570.37	466.56	6972.48
2006**	126,683	Volume	4	28	123	228	637	5820	469	7309
		Rate	3.16	22.12	97.17	180.12	503.23	4597.8	370.51	5774.11
2007**	130,103	Volume	6	27	114	225	824	6537	547	8280
		Rate	4.61	20.75	87.62	172.94	633.34	5024.48	420.44	6364.19
2008**	133,616	Volume	9	18	135	209	819	6599	459	8248
		Rate	6.74	13.47	101.04	156.42	612.95	4938.78	343.52	6172.91
2009**	137,224	Volume	4	20	132	194	797	6785	441	8373
		Rate	2.91	14.57	96.19	141.37	255.06	580.8	321.37	6101.7
2010***	137,224	Volume	5	14	115	166	711	6282	404	7697
		Rate	3.64	10.2	83.8	120.97	518.13	4577.92	294.41	5609.08

The above chart lists the Crime Volume and Crime Rate for the City of McAllen for the past ten years. The “rate” reflects the number of crimes reported per 100,000 residents.

\* The population information was obtained from the City of McAllen Planning Department.

\*\* Crime rates for 2004 - 2008 are based on US Census 2002 population estimates.

\*\*\*Pending U.S. Census 2010 Rates

# **McAllen**

## **Crime Facts at a Glance**

### **2010**

- There were an estimated 7697 index offenses reported in McAllen in 2010.
- The Crime rate for the City of McAllen was 5609.08 index offenses per 100,000 inhabitants.
- During 2010, McAllen Police Officers made 7,518 arrests. Of those arrested, 1,598 were of 17 years of age or younger.
- The value of stolen property totaled \$11,961,270.
- Firearms were used in 60% of all murders reported.
- There were an estimated 166 Aggravated assaults. Of these, 31 percent were committed with the use of strong arm tactics.
- Residential burglaries accounted for 62 percent of all burglaries reported.
- The estimated number of motor vehicle thefts were 404, for a total dollar loss \$5,526,756. Of the types of motor vehicles reported stolen, 64 percent were trucks.
- In 2010, larceny/theft victims suffered losses totaling \$4,680,598.



# Index Crime Analysis

# Index Crime Analysis

## Murder

### Definition

Murder and non negligent manslaughter as defined in the UCR program is the willful killing of one human being by another.

This offense category includes any death due to a fight, argument, quarrel, assault or commission of a crime. Attempted murder and assaults with the intent to kill are not counted as murder, but are included in UCR as aggravated assault. Suicides, accidental deaths, and justifiable homicides are also excluded from the murder classification.

The classification of this offense as well as for all Index Crimes is based solely on police investigation and not upon determinations by courts, medical examiners, coroners, juries or other judicial bodies.

### Analysis

#### **Volume**

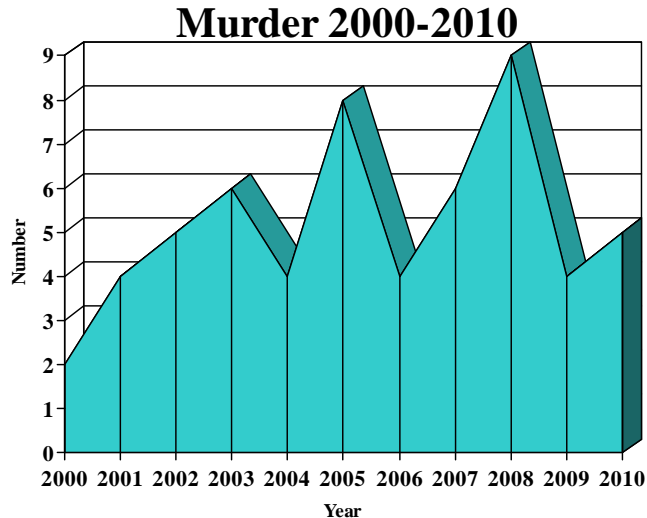
The reported number of murders in McAllen was 5 in 2010. There was a 25 percent increase in the number of murders when compared to 2009. The murders occurred in the months of March, June and August.

#### **Rate**

The murder rate for McAllen in 2010 was 3.64 murders committed for every 100,000 persons. The murder rate increased by 25.2 percent from 2009.

#### **Clearance**

In 2010, 100% percent of all murders were cleared by arrest or exceptional means.



### Case Synopsis

One murder occurred between 0400 hrs to 0500 hrs, one occurred between 1500 to 1600 hrs, one between 1700 hrs to 1800 hrs and two more between 2100-2200 hours.

All five murders occurred inside residences. Three of the murders were committed using guns, one using a knife, one using strong arm. All five of the murders were results of an argument.

Victims included four Hispanic males and one Hispanic female. The victims ranged in age from 2 to 47 years of age.

All five murders have been cleared by arrest.

# Rape

## Definition

Rape, as defined in the Uniform Crime Reporting Program, is the carnal knowledge of a female forcibly and against her will. Statistics reported in this crime category include assaults to commit forcible rape, however, statutory rape (rape against a female under the age of consent) and sexual assaults on males are excluded.

## Analysis

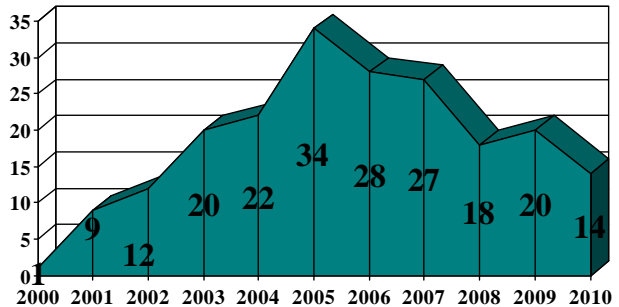
### Volume

The number of rapes committed in McAllen in 2010 was 14. This represents a decrease of 30 percent when compared to 2009. The highest number of Rapes (3) occurred in August and December.

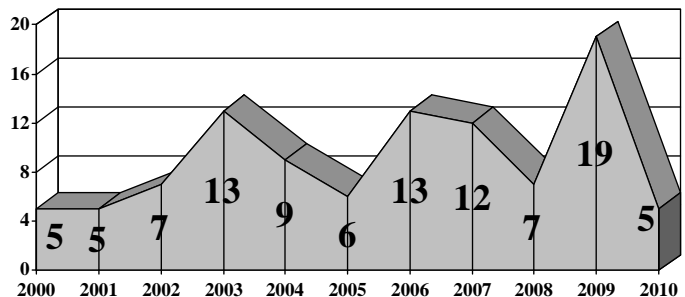
### Rate

The rape rate for McAllen was 10.20 rapes per 100,000 persons. The rape rate decreased by 30 percent from 2009.

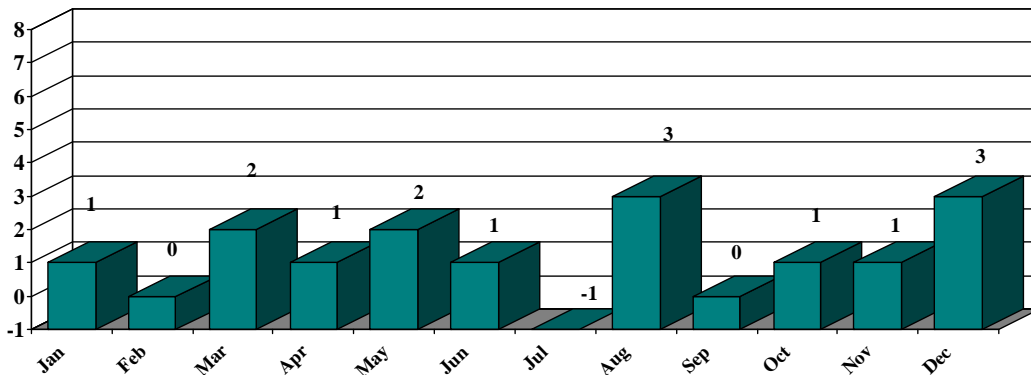
**Rape 2000-2010**



**Rape Arrest 2000-2010**



**Rape Offenses by Month 2010**



## **Nature of Rape**

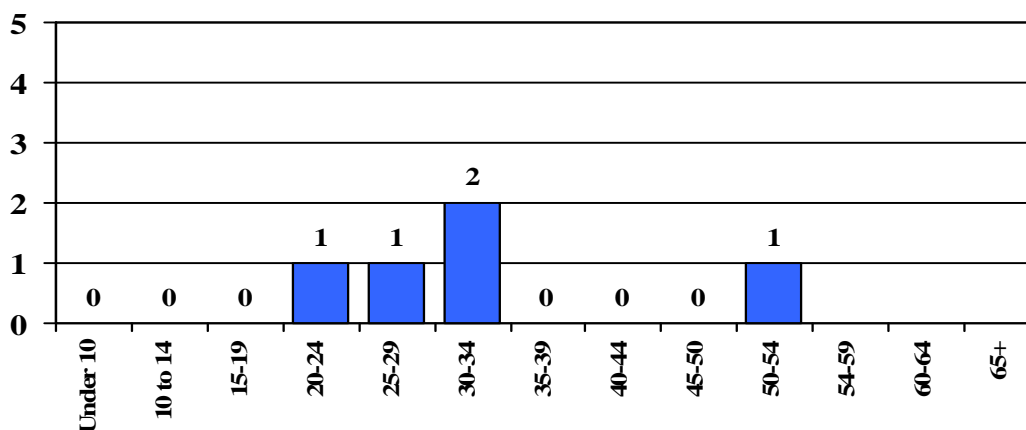
Forcible rape differs from other violent crimes because in many cases, the victim is hesitant to report the offense to police. The rigors of court procedures, embarrassment and fear of any accompanying stigma exert a deterrent effect upon the victim's willingness to contact the police. The presence of prior relationship between the victim and offender may make the determination of force difficult to establish, while the usual clandestine nature of this crime presents a problem in verification. As attitudes toward the reporting of rape change, trends in the number of reported offenses can be expected to change correspondingly.

---

## **Persons Arrested**

Five people arrested for rape in the year 2010. Subjects arrested were males. The age group of 30-34 had the highest number of subjects arrested, followed by the age groups of 20-24, 25-29 and 50-54.

## **Rape Arrestees by Age 2010**





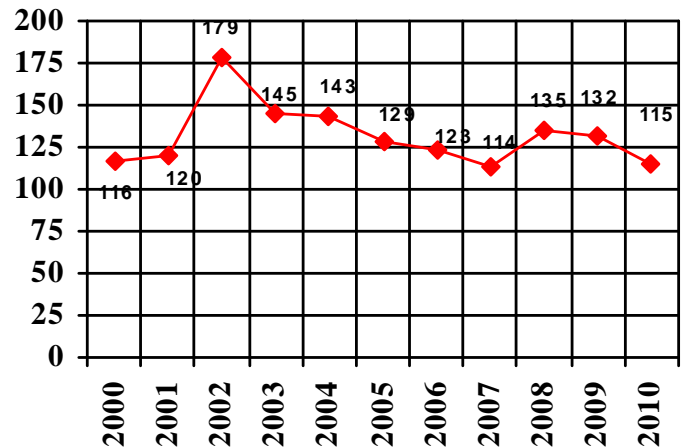
# Robbery

## Definition

Robbery, in the Uniform Crime Reporting program, is defined as the taking or attempting to take anything of value from the care, custody, or control of a person or persons by force, threat of force or violence, or by putting the victim in fear.

Robbery is a violent crime that frequently results in injury to the victim. Included in this category are assaults to commit robbery and attempted robberies.

**Robbery 2000-2010**



## Analysis

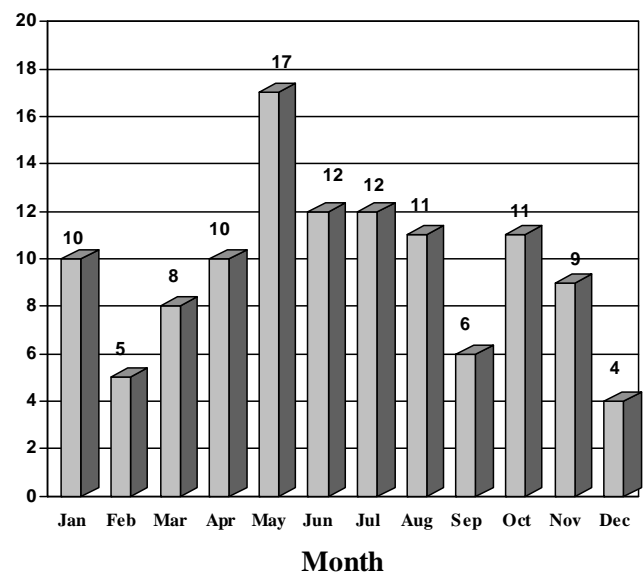
### **Volume**

The number of Robberies committed in McAllen in 2010 was 115. This represents 12.9 percent decrease when compared to 2009. The month of May had the highest number of robberies, and the month of December had the lowest number of robberies.

### **Rate**

The Robbery rate for McAllen in 2010 was 83.80 robberies for every 100,000 persons. The change in the rate of robbery from 2009 was a decrease of 12.9 percent.

**Reported Robberies by Month 2010**

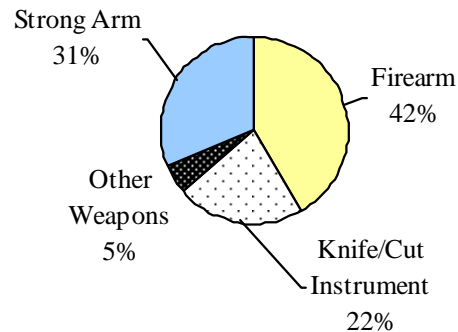
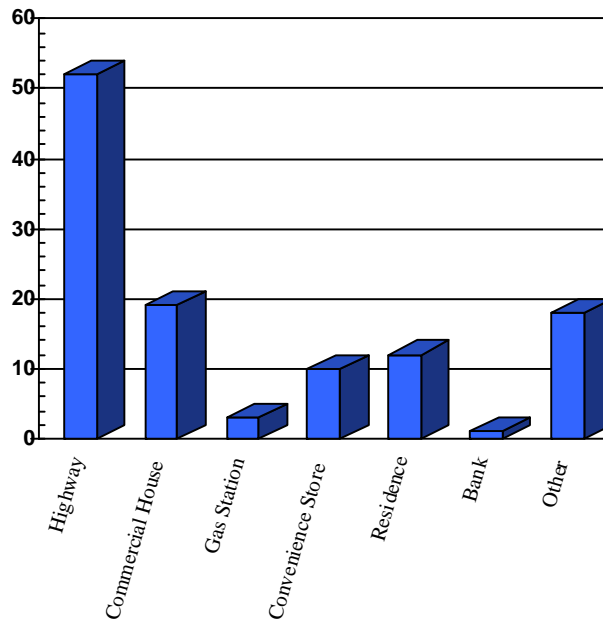


## Nature

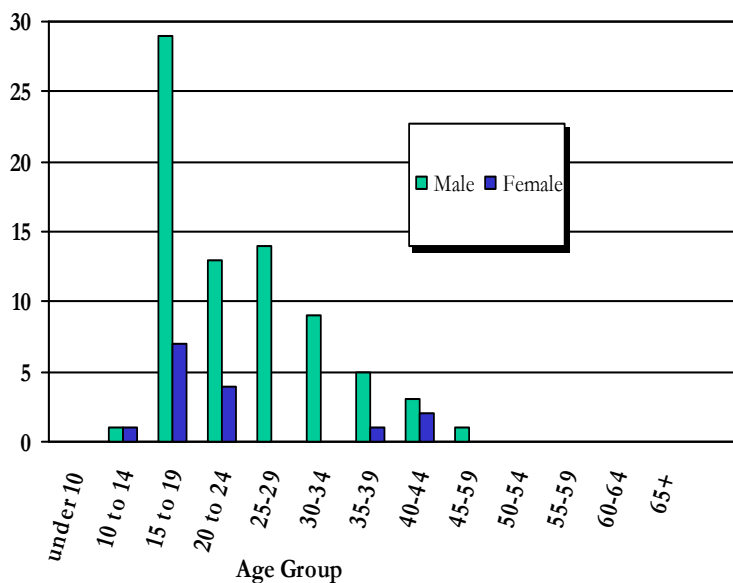
In 2010, property loss during the commission of robberies amounted to \$312,757.

Of all reported robberies in 2010, 42 percent were committed using firearms. Strong arm tactics were used in 31 percent of the robberies. Knives/Cutting Instruments were used in 22 percent of the robberies, and other weapons used were 5 percent.

Robbery Value Losses by Location 2010



Robbery Arrestees by Age & Gender 2010



## Persons Arrested

The number of persons arrested for robbery in 2010 totaled 99. The age group representing the largest number of robbery arrestees for male and female were the 15-19 year-old group.

# Aggravated Assault

## Definition

Aggravated Assault is defined in the Uniform Crime Reporting program as an unlawful attack by one person upon another for the purpose of inflicting severe or aggravated bodily injury. This type of assault is usually accompanied by the use of a weapon or by means likely to produce death or great bodily harm. Statistics for aggravated assault include attempts to commit aggravated assault.

## Analysis

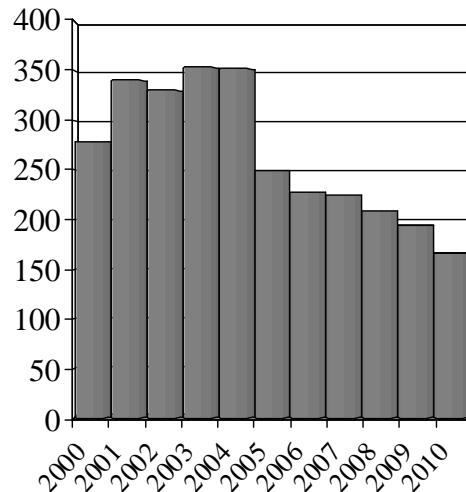
### Volume

The number of aggravated assaults committed in 2010 were 166. This represents a 14.4 percent decrease from the 194 reported in 2009. More aggravated assaults occurred in October than any other month. August had the fewest aggravated assaults.

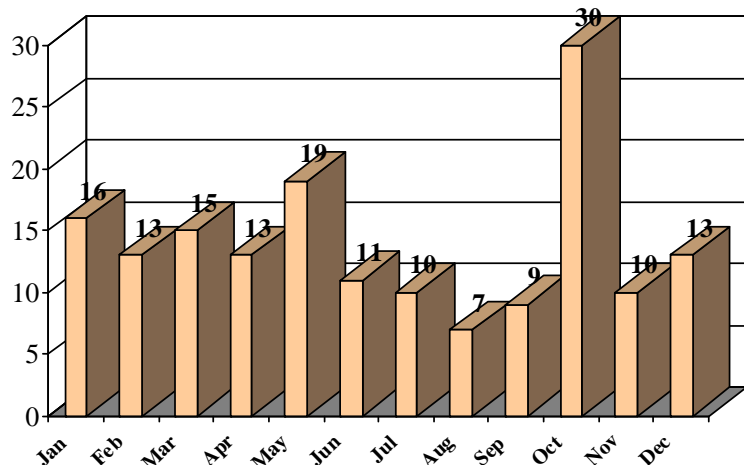
### Rate

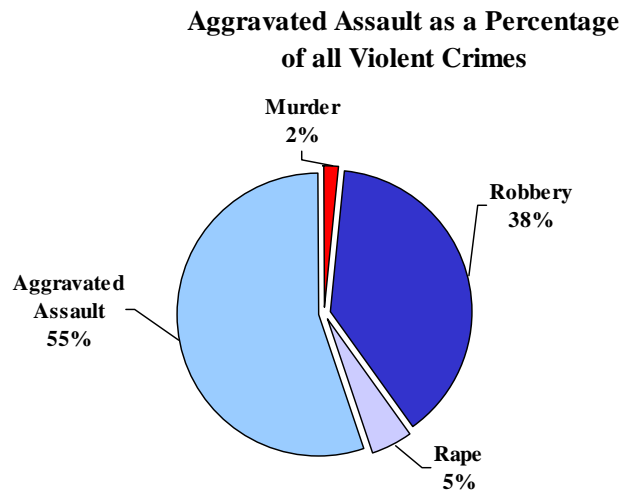
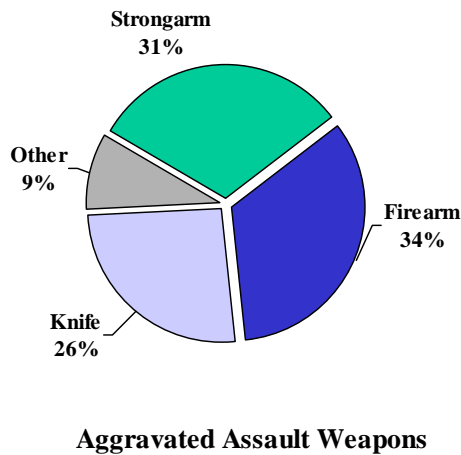
The aggravated assault rate for McAllen in 2010 was 120.97 per 100,000 persons. The rate decreased 14.4 percent from 2009.

## Aggravated Assault 2000-2010



## Aggravated Assault by Month 2010



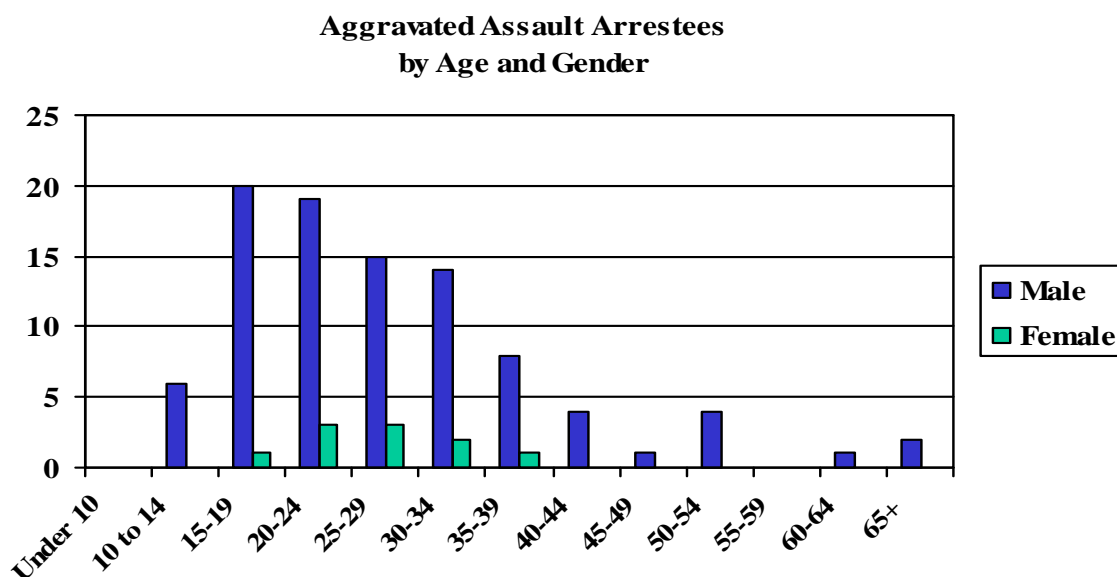


## Nature

Of all aggravated assaults, 34 percent were committed with the use of a firearm. Strong arm tactics represented 31 percent. Knives or other cutting instruments were used in 26 percent of the aggravated assaults, and other dangerous weapons were used in the remaining 9 percent. The use or attempted use of a dangerous weapon in an assault or the serious injury inflicted by hands, fists or feet is what separates this index offense from assaults categorized as “simple assaults.” Citizens of McAllen reported 1,501 simple assaults in 2010.

## Persons Arrested

McAllen Law Enforcement officers arrested 95 people for aggravated assault in 2010. Of the persons arrested 85 of the perpetrators were male, and 10 were female. The age group with the highest number of aggravated assault arrestees was the age group between 15-19 for males and 20-24 for females.



# Burglary

## Definition

Burglary, for Uniform Crime Reporting purposes, is the unlawful entry of a structure with the intent to commit a felony or a theft. While the use of force to gain entry is not required to classify an offense as burglary, attempted forcible entries to commit burglary are counted in this crime's statistics.

## Analysis

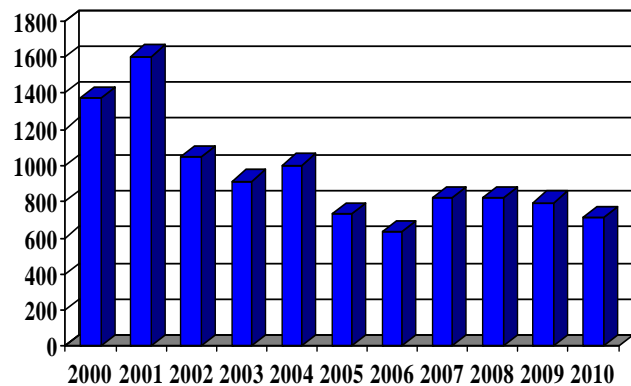
### Volume

The number of burglaries committed in McAllen in 2010 were 711. This represents a 10.8 percent decrease when compared to the burglaries committed in 2009. More burglaries were committed in June than any other month. The month with the fewest burglaries was February.

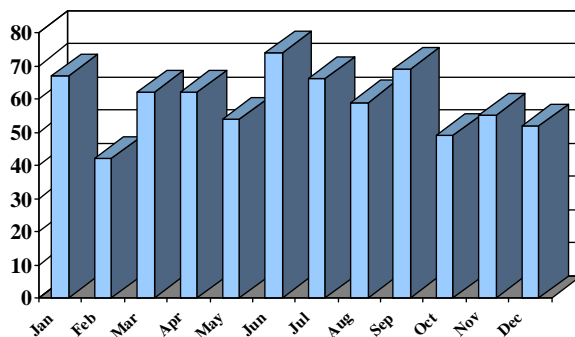
### Rate

The 2010 burglary rate was 518.13 burglaries for every 100,000 persons. The change in the burglary rate from 2009 shows a decrease of 10.8 percent.

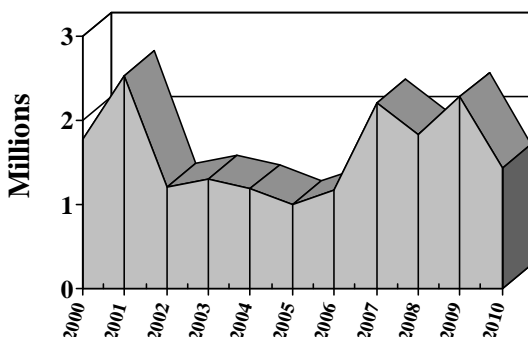
## Burglary Offenses 2000-2010



## Burglary by Month 2010



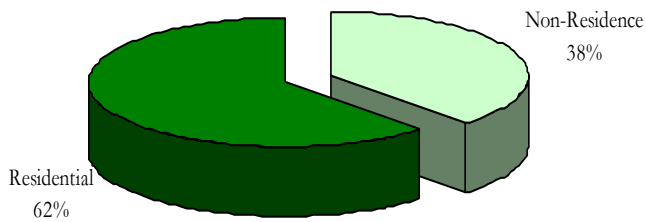
## Value Lost to Burglary 2000-2010



## Value

In 2010, McAllen burglary victims suffered losses totaling \$1,439,678. This total represents an decrease of 31.1 percent.

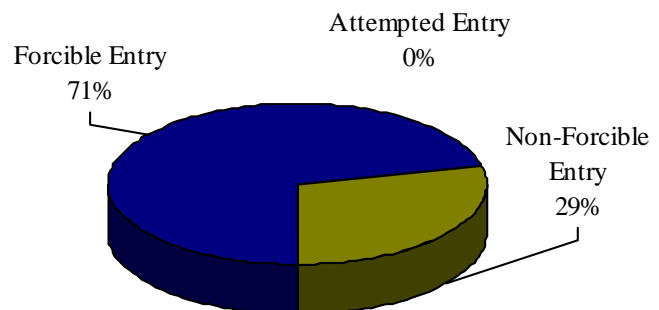
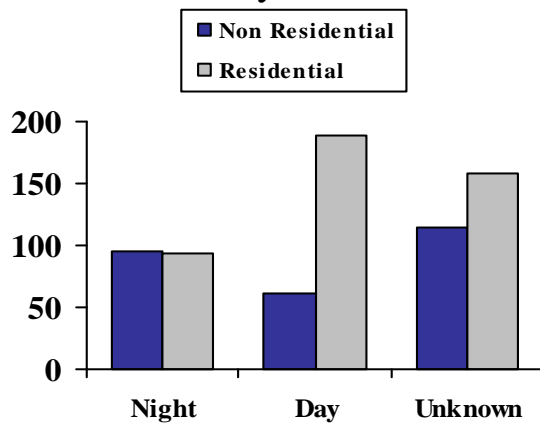
**Burglary by Location 2010**



## Nature

Of all reported burglaries in 2010, 62 percent occurred at residences. Forcible entry accounted for 71 percent of all burglaries, while 29 percent were unlawful entries (without force), and the remainder were forcible entry attempts. Of the offenses for which the time of occurrence was known, 35 percent occurred during the day, and 27 percent occurred during the night and the remaining 38 percent was unknown.

**Burglary Offenses by Time of Day 2010**

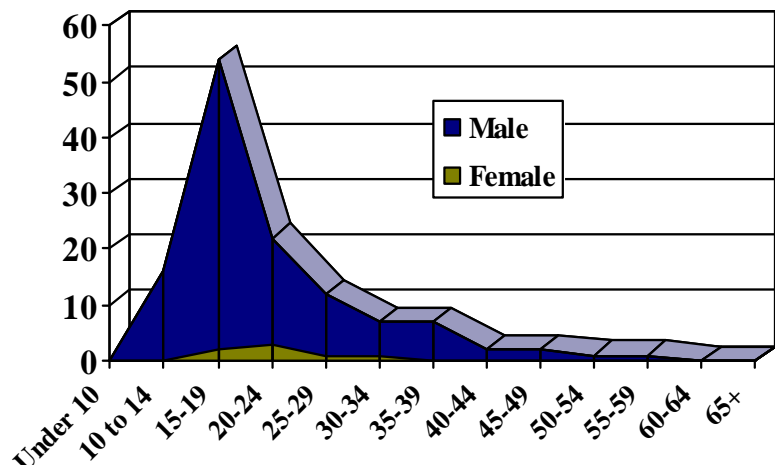


**Burglary by Methods 2010**

## Persons Arrested

In 2010, 124 people were arrested for burglary. Of the people arrested 118 were male, and 6 were female. The age group with the largest number of burglary arrestees for both males and females was the 15-19 year old age group.

**Burglary Arrestees by Age and Gender 2010**



# Larceny/Theft

## Definition

Larceny/Theft, in the Uniform Crime Reporting program, is the unlawful taking, carrying, leading, or riding away of property from the possession or constructive possession of another.

Larceny/Theft includes crimes such as shoplifting, pocket-picking, purse snatching, thefts from motor vehicles, theft of motor vehicle parts and accessories, bicycle thefts, and other things of value in which no use of force, violence or fraud occurs.

In the UCR program, this crime classification does not include embezzlement, “con” games, forgery, and the passing of worthless checks. Motor vehicle theft is not included in this category as it is a separate index crime offense.

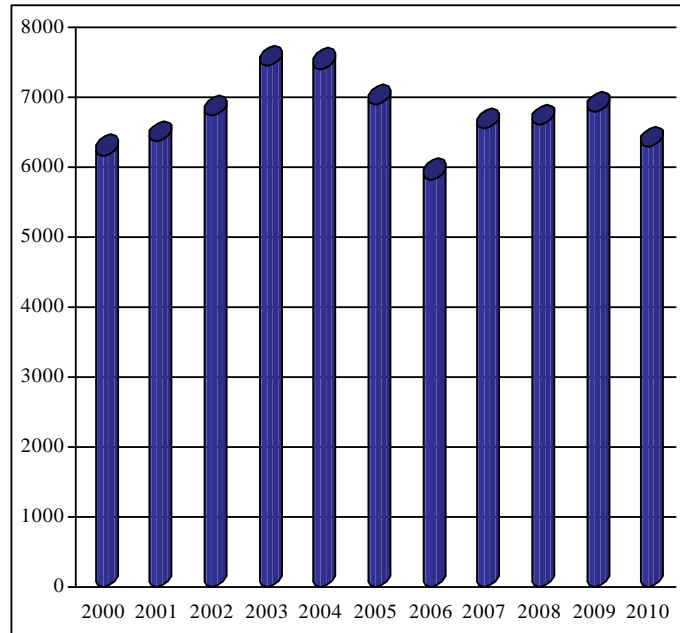
## Analysis

### **Volume**

The number of thefts committed in McAllen in 2010 was 6282, making this the largest crime category of the Index Crimes. The volume of theft decreased 7.4 percent when compared to 2009. More thefts were committed in July than any other month. The fewest thefts occurred in February. It is reasonable to expect that many offenses in this category, particularly where the value of goods stolen is small, are never reported to police agencies.

### **Larceny/Theft Offenses**

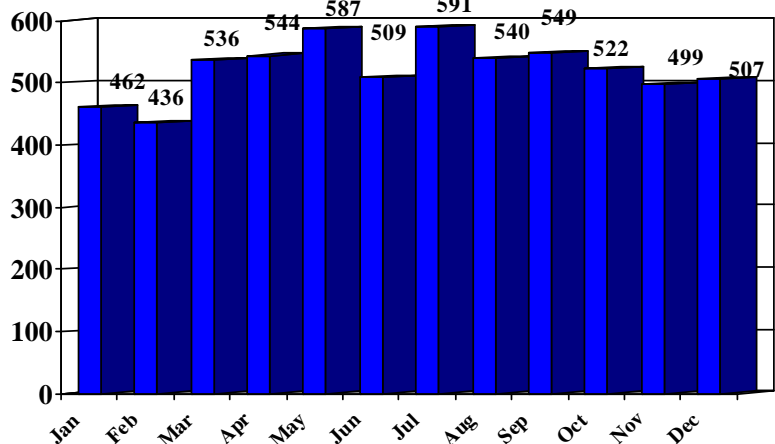
#### **Volume 2000-2010**



### **Rate**

The 2010 theft rate for McAllen was 4577.92 thefts per 100,000 persons. The change in theft rate from 2009 was a decrease of 7.4 percent.

### **Theft by Month 2010**



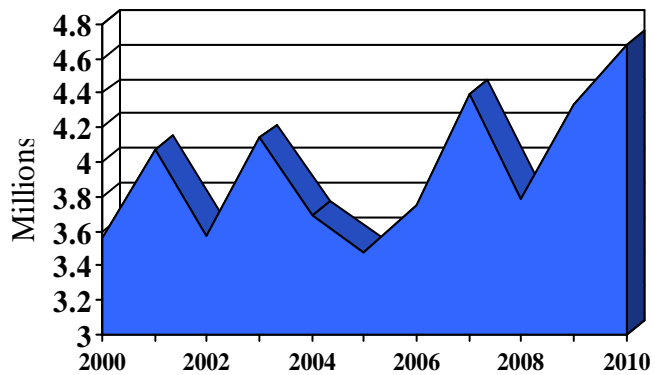
## Nature

In 2010, theft victims suffered losses totaling \$4,680,598. The average dollar loss per theft was \$745.

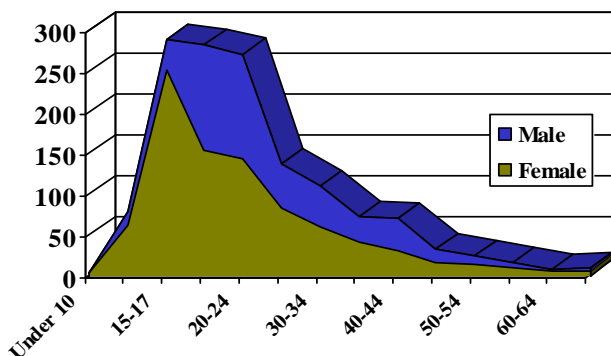
For data collection, larceny-theft is divided into nine categories: pocket-picking, purse-snatching, shoplifting, thefts from motor vehicles, theft of motor vehicle parts, theft of bicycles, theft from buildings, theft from coin-operated machines, and all other thefts (except motor vehicles.) Of the nine theft categories, the highest average theft was the theft from Other's category which yielded an average of \$1,655.00 per reported occurrence followed by thefts from building was \$1,177.60. Theft from auto averaged \$736.20 per report, while theft of auto parts was \$549.40. The lowest average per report was from Coin operated machines with an average of \$122.00

Value of Property Stolen in Theft			
Type of Theft	Offenses	Property Value	Average Loss
Pick Pocket	15	\$3,556	\$237.10
Purse Snatching	12	\$6,221	\$518.40
Shoplifting	2041	\$297,115	\$145.60
From Autos	1066	\$784,814	\$736.20
Auto Parts	1206	\$662,575	\$549.40
Bicycles	63	\$9,642	\$153.00
From Buildings	337	\$396,851	\$1,177.60
From Coin-Operated Machines	21	\$2,562	\$122.00
Other	1521	\$2,517,262	\$1,655.00
<b>Total</b>	<b>6282</b>	<b>\$4,680,598</b>	<b>\$745.00</b>

## **Value Lost to Larceny/Theft 2000-2010**



## **Larceny/Theft Arrestees by Age and Gender**



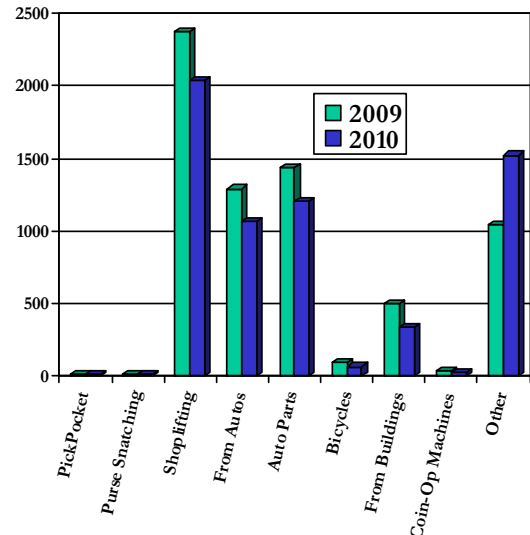
## Persons Arrested

McAllen Law Enforcement officers made 1,653 theft arrests during 2010. Of the subjects arrested for theft during 2010, 778 were male and 875 were female. The age group with the largest number of theft arrestees was the 15-17 year old group with a total of 288 subjects arrested.



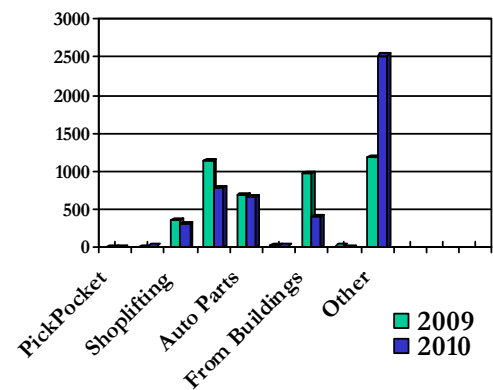
Theft: Property Stolen by Classification 2009-2010			
Type of Theft	2010	2009	% CHANGE
Pick Pocket	15	13	15.38%
Purse Snatching	12	10	20%
Shoplifting	2041	2378	-14.17%
From Autos	1066	1290	-17.36%
Auto Parts	1206	1433	-15.84%
Bicycles	63	88	-28.41%
From Buildings	337	494	-31.78%
From Coin-Operated Machines	21	35	-40%
Other	1521	1044	45.68
<b>Total</b>	<b>6282</b>	<b>6785</b>	<b>-7.40%</b>

**Theft: Property Stolen  
by Classification 2009-2010**



Theft: Value of Property Stolen by Classification 2009-2010			
Type of Theft	2010	2009	% Change
Pick Pocket	\$3,556	\$2,412	47.43%
Purse Snatching	\$6,221	\$2,871	116.68%
Shoplifting	\$297,115	\$345,890	-14.10%
From Autos	\$784,814	\$1,129,674	-30.53%
Auto Parts	\$662,575	\$689,271	-3.87%
Bicycles	\$9,642	\$17,136	-43.73%
From Buildings	\$396,851	\$962,617	-58.77%
From Coin-Operated Machines	\$2,562	\$6,283	-59.22%
Other	\$2,517,262	\$1,183,997	112.61%
<b>Total</b>	<b>\$4,680,598</b>	<b>\$4,340,151</b>	<b>7.84%</b>

**Theft: Value of Property Stolen  
by Classification 2009-2010**



### Nature

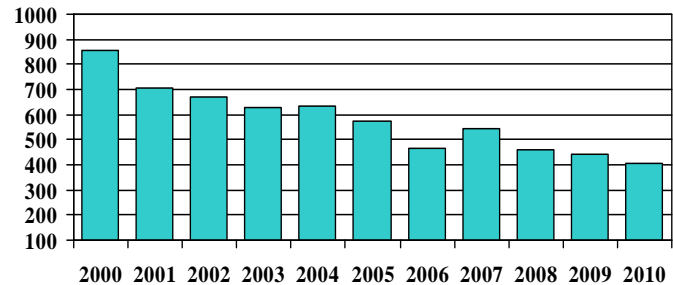
When compared to 2009, the number of shoplifters decreased 14.17 percent, while the purse snatching thefts increased by 20 percent. The significant increase is in other category which increased 45.68 when compared to 2009.

# Motor Vehicle Theft

## Definition

Motor Vehicle Theft, for UCR purposes, is the theft or attempted theft of a motor vehicle. A motor vehicle is defined as a self-propelled vehicle that travels on the surface but not on rails. Specifically excluded from this category are motor boats, construction equipment, airplanes, and farming equipment.

## Motor Vehicle Theft 2000-2010

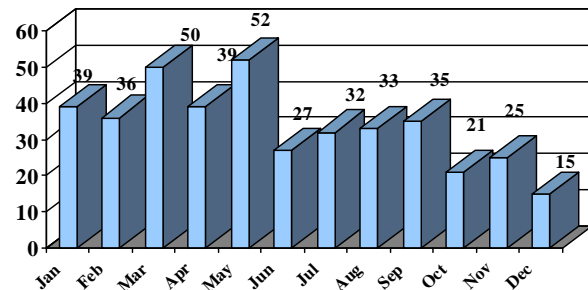


## Analysis

### Volume

The number of motor vehicle thefts committed in McAllen in 2010 was 404. The volume of motor vehicle theft decreased 8.4 percent when compared to 2009. More motor vehicle thefts were committed in May, while the fewest occurred in December.

## Motor Vehicle Theft by Month 2010



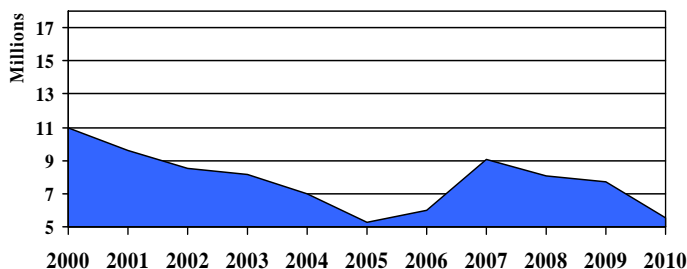
### Rate

The motor vehicle theft rate for McAllen in 2010 was 294.41 thefts per 100,000 persons. The change in motor vehicle theft decreased by 8.4 percent when compared to 2009.

## Nature

In 2010, motor vehicle theft victims suffered losses totaling \$5,526,756. The average dollar loss per vehicle was \$13,680.09. Of the types of motor vehicles reported to be stolen, 64 percent were trucks, 30 percent were autos and the remainder (6 percent) are classified as 'other vehicles.' The 'other vehicle' classification includes all other motor vehicles included in the UCR definition, such as snowmobiles, motorcycles, motor scooters, trail bikes, mopeds, golf carts, and the like.

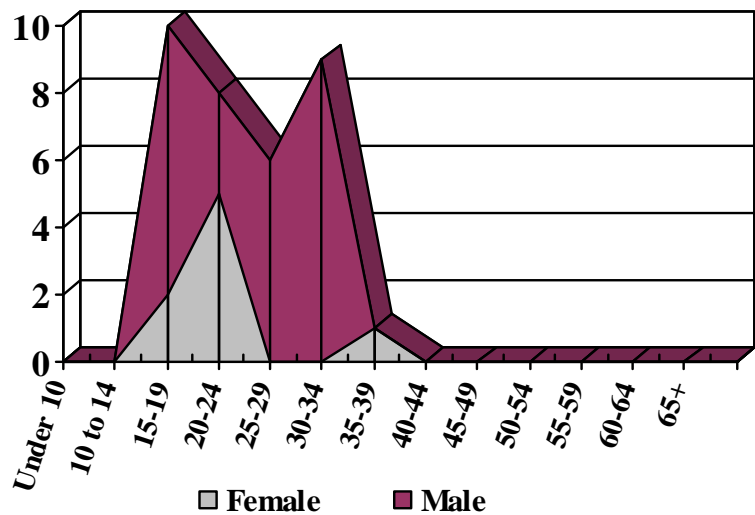
## Motor Vehicle Value at Time of Theft 2000-2010



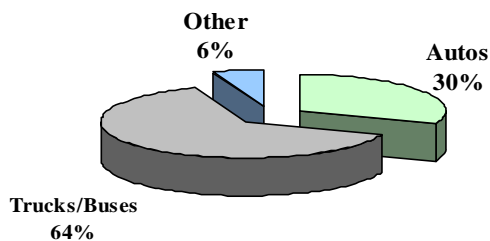
## Persons Arrested

In 2010 McAllen Law Enforcement Officers arrested 34 people for motor vehicle theft. Of the motor vehicle theft arrestees, 28 were male, and 6 were female. The age group with the largest number of arrestees were the 15-19 year old age group.

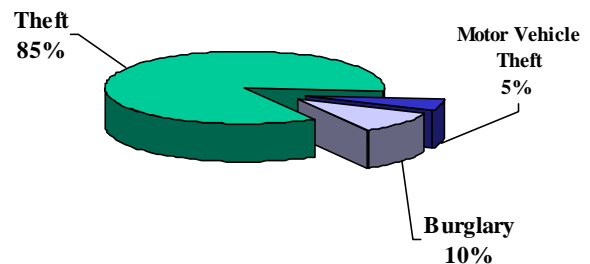
## MVT Arrestees by Age and Gender



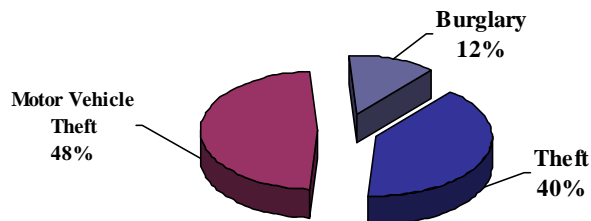
## Motor Vehicle Theft by Type Stolen



## MVT as a Percentage of Property Crime by Volume 2010



## MVT as a Percentage of Property Crime by Value 2010





## Selected Non-Index Crimes

# Selected Non-Index Crimes

## DWI Arrests

### Definition

For UCR purposes, Driving While Under the Influence (DWI) is the driving or operating any motor vehicle or common carrier while under the influence of liquor or narcotics.

### Analysis

#### **Volume**

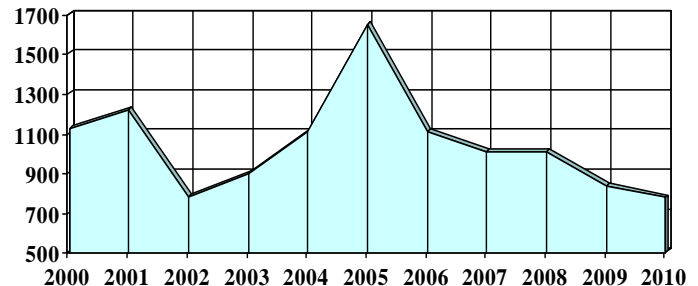
As with Part II non-index crimes, information on the number of reported crimes is not collected by the UCR program for this offense. However, the number of persons arrested for this crime is collected.

The number of arrests for DWI in McAllen in 2010 was 775. The volume of arrests decreased 8.18 percent in comparison to 2009.

#### **Rate**

The 2010 DWI arrest rate was 564.77 per 100,000 persons. When compared to 2009, this was a decrease of 8.2 percent.

### **DWI Arrests 2000-2010**



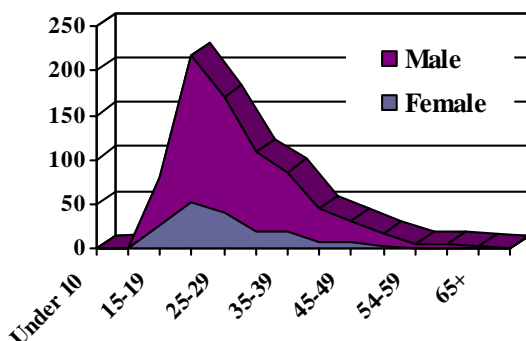
### Nature

Any consideration of the number and rate of DWI arrests must be reconciled with the fact that many factors control the ability of law enforcement officers to detect drunken drivers. Among the significant factors which drive the DWI arrest rate are these: media coverage of the DWI problem, public awareness, availability of funds for patrol officer overtime, and the skill and training in DWI detection of officers.

### Persons Arrested

Of the 775 persons arrested for DWI in 2010, 174 were female and 601 were male. The age group with the highest number of DWI arrestees was the 20-24 year old group.

2010 DWI Arrestees  
by Age and Gender



# Drug Abuse Arrests

## Definition

For UCR purposes, drug abuse encompasses all violations of the narcotic drug laws. These are offenses such as unlawful possession, sale, use, growing, and manufacturing of narcotic drugs.

In this report, these violations are summarized to include all drug abuse arrests (grand total drug abuse), sale and manufacturing arrests, and drug possession arrests.

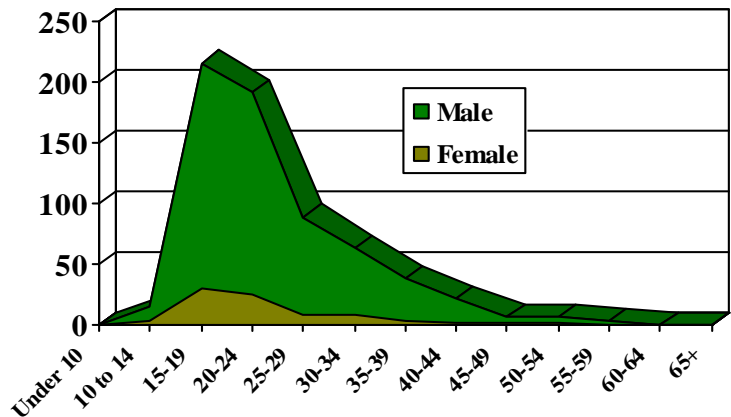
As with all Part II non-index crimes, information on the number of reported crimes is not collected for the UCR program. However, the number of persons arrested for these crimes is collected.

## Arrests

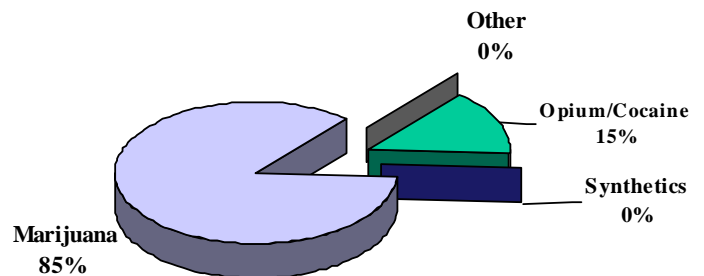
The reported number of arrests for possession of drugs in McAllen in 2010 was 628. Of the arrestees, 555 were male and 73 were female. The age group with the largest number of persons arrested for drug possession violations was the 15-19 year old group. The largest number of possession arrests came from marijuana at 85 percent, followed by cocaine at 15 percent.

For 2010 one hundred and twenty arrests were made for the sale and/or manufacturing of narcotics. Those one hundred and twenty arrests came from marijuana and cocaine.

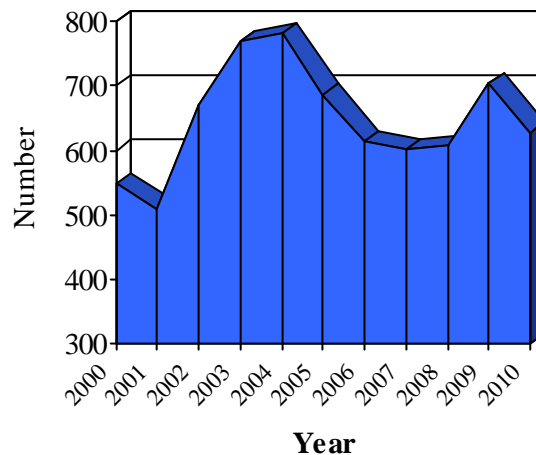
**Drug Abuse Arrestees  
by Age and Gender 2010**



**Drug Possession Arrests  
by Drug Type 2010**



**Drug Possession Arrests  
2000-2010**



# Drug Seizures

## Purpose

Drug seizure information is presented in compliance with Article 4476-15 5.14 VACS and its requirement that “All law enforcement agencies in this state shall file monthly with the (DPS) Director a report of all arrests for drug offenses made and quantities of controlled substances seized by them during the preceding month.”

Type and Quantity of Drugs Seized		
Class	Type	Quantity
Cannabinoids	Marijuana	50,053.78 lbs
Opiates	Heroin	0
Cocaine	Cocaine	1,332.10 lbs
	Crack	0 Grams
Hallucinogens	Designer Drugs	1.5 Units
Other Drugs	Barbiturates	0 Grams
	Amphetamines	0 Grams
	Meth-amphetamines	1.165 lbs
	Tranquilizers	1.5 Grams

## Quantities

The above chart displays the quantity of illegal drugs seized by the Special Investigations Unit. Amounts are rounded. Dose units refer to one pill, tablet, capsule or other single user quantity. The Special Investigations Unit is a unit of the McAllen Police Department that conducts drug enforcement in McAllen as well as other duties.

# Weapons Arrests

## Definition

Weapons: Carrying, possessing includes all violations and attempted violations of regulations or statutes controlling the carrying, using, possessing, furnishing, and manufacturing of deadly weapons or silencers. As with all Part II non-index crimes, the UCR program collects only reports of arrests for this offense.

## Analysis

As indicated earlier, Firearms were the murder weapon of choice in 60 percent of McAllen murders.

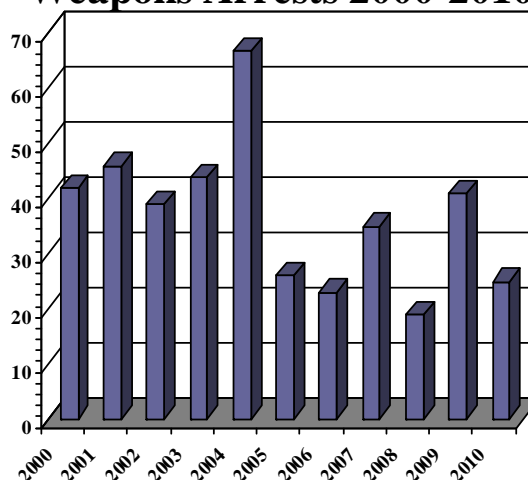
## **Volume and Rate**

In 2010, 29 arrests for weapon violations were reported. The number of arrests decreased 29.27 percent from 2009. The 2010 weapons arrest rate was 21.13 arrests per 100,000 persons. This was an decrease of 29.3 percent.

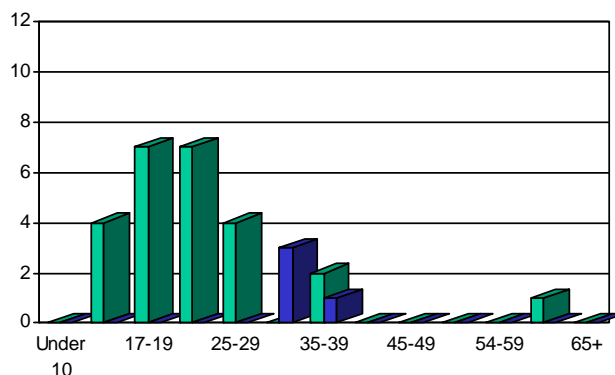
## Persons Arrested

Twenty five males and four females were arrested for weapons charges. The largest age group of arrestees for weapon violations was the 17-19 and 20-24 year old group.

**Weapons Arrests 2000-2010**



**Weapons Arrestees  
by Age Group 2010**







## Calls for Service

# McAllen Calls for Service Clock 2010



During 2010, the department responded to 166,653 calls for service. This represents a increase of 2.7 percent when compared to 2009.

One <b>CALL FOR SERVICE</b> Every 3.15 minutes
--

This mode of display represents the annual ratio of calls for service to fixed time intervals.

This is an aggregate representation of data which is designed to convey the annual service call experience by showing the relative frequency of occurrence.

One <b>TRAFFIC STOP</b> Every 22.56 minutes
---

One <b>CRIMES AGAINST PROPERTY</b> Every 40.51 minutes
--

One <b>SUSPICIOUS PERSON / CIRCUMSTANCE</b> Every 48.40 minutes
---

One <b>ASSISTANCE TO THE PUBLIC</b> Every 9.2 minutes
---

One <b>DISTURBANCE</b> Every 46.28 minutes
--

One <b>ALARM CALLS</b> Every 25.65 minutes
--

One <b>TRAFFIC ACCIDENT</b> Every 46.46 minutes
---

One <b>TRAFFIC FLOW PROBLEM</b> Every 81.55 minutes
---

One <b>FALSE/UNKNOWN 911 CALL</b> Every 3.67 hours
--

One <b>CRIME AGAINST A PERSON</b> Every 1.32 hours
--

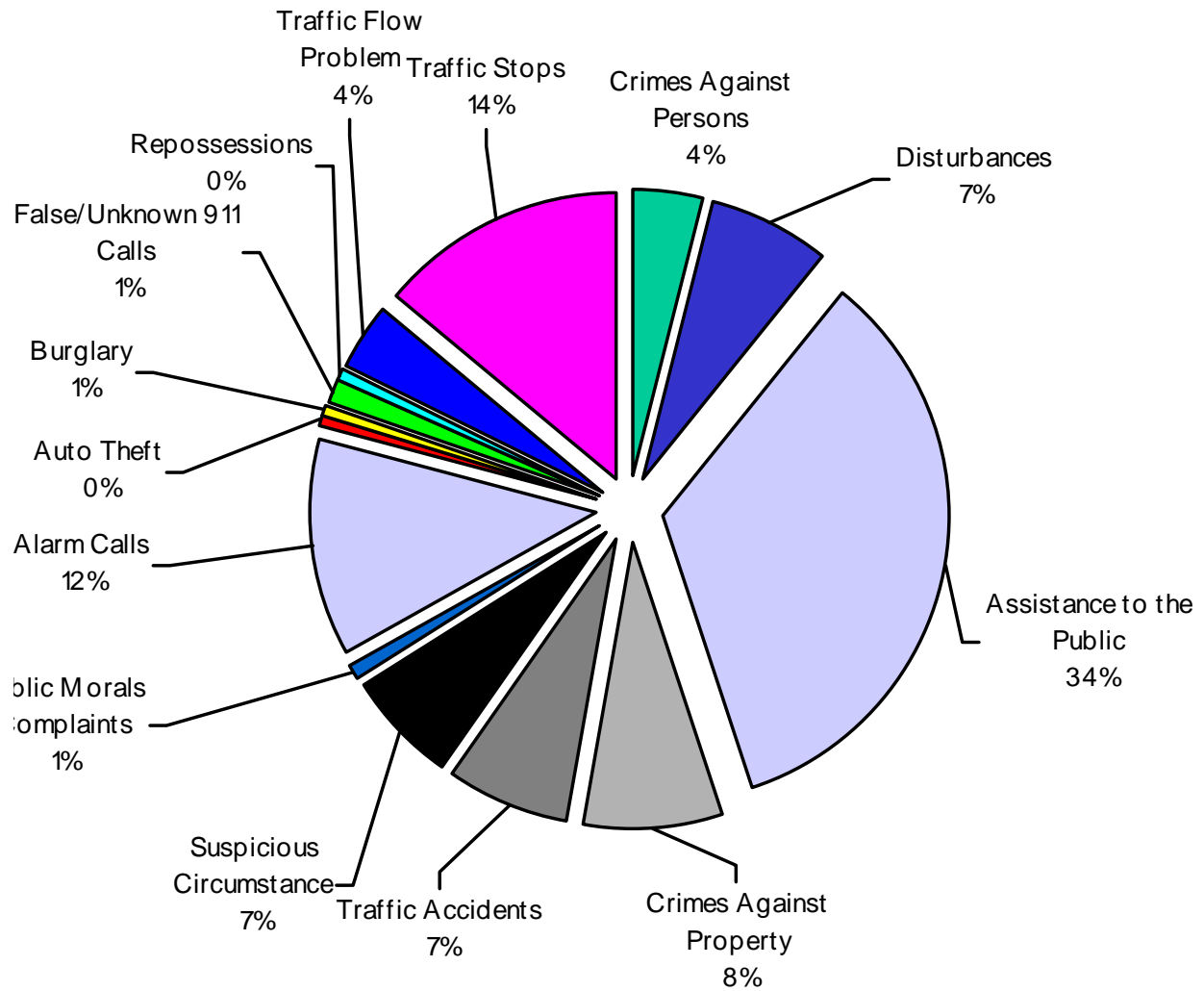
One <b>BURGLARY</b> Every 12.32 hours
---

One <b>AUTO THEFT</b> Every 21.69 hours
---

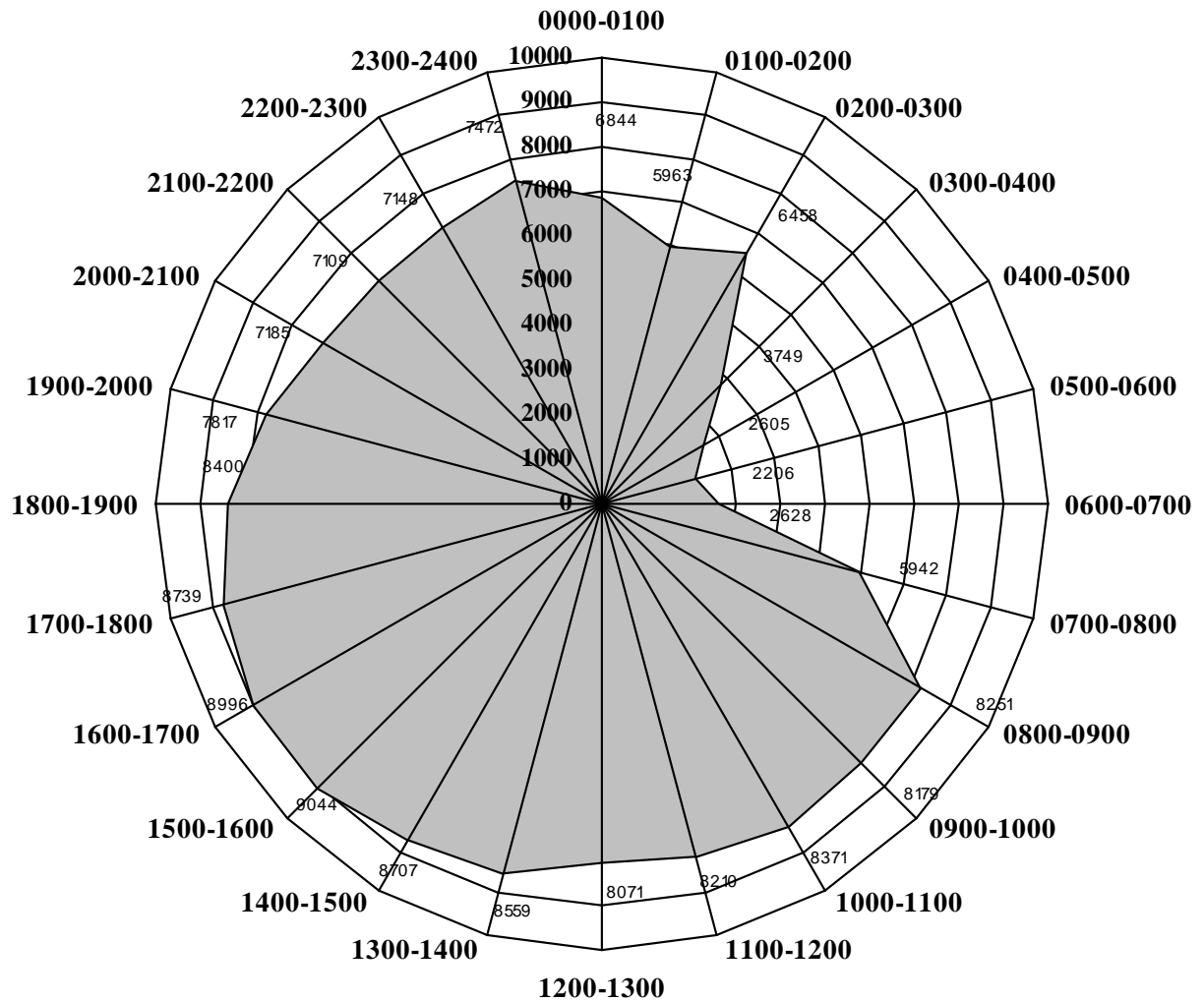
One <b>PUBLIC MORALS COMPLAINT</b> Every 6.72 hours
---

One <b>REPOSSESSION</b> Every 12.43 hours
---

# CALLS FOR SERVICE 2010



# Total Calls for Service by Hour 2010





# Law Enforcement Personnel

# Law Enforcement Personnel 2010

## Commissioned Personnel

The City of McAllen is currently authorized for 278 sworn officers, and is at 96.4 percent of full strength.

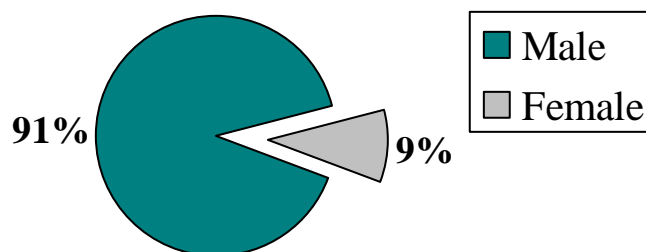
The McAllen Police Department employs 267 full-time sworn officers. The average number of officers per 1000 citizens of McAllen is 1.9. Of the 267 officers, 91 percent are male and 9 percent are female.

## Civilian Personnel

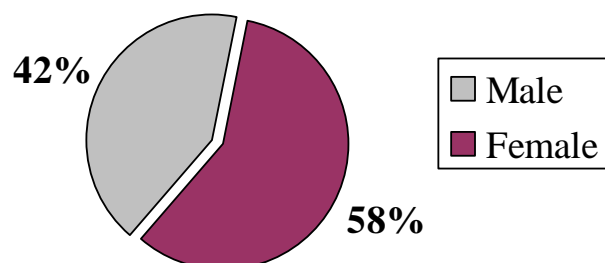
The Police Department is authorized for 142 civilian employees.

The McAllen Police Department employs 135 civilian employees, which include Community Service Specialists, Emergency Communications Specialists, Custodians, Records Clerks, Administrative Assistants, Secretaries, Crime Statistician, Animal Wardens, and Fleet Maintenance Personnel. 132 of the civilian employees are non-exempt, and 3 are exempt employees. Of the civilian employees 42 percent are male and 58 percent are female.

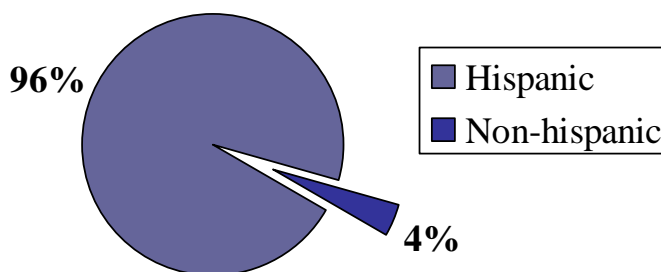
Percentage of Male and Female Sworn Officers



Percentage of Male and Female Civilian Employees



Employee Ethnicity





# McAllen Arrest Data

## 2010

## Summary of Arrest Data 2010

CLASSIFICATION OF OFFENSES	JUVENILE		ADULT		TOTAL	PERCENTAGE COMBINED
MURDER & NON-NEGLIGENT MANSLAUGHTER	0	0.0%	7	0.1%	7	0.1%
MANSLAUGHTER BY NEGLIGENCE	0	0.0%	1	0.0%	1	0.0%
FORCIBLE RAPE	0	0.0%	5	0.1%	5	0.1%
ROBBERY	32	2.0%	67	1.1%	99	1.3%
AGGRAVATED ASSAULT	20	1.3%	75	1.3%	95	1.3%
BURGLARY-BREAKING OR ENTERING	53	3.3%	71	1.2%	124	1.6%
LARCENY-THEFT (EXCEPT MOTOR VEHICLE)	624	39.0%	1029	17.4%	1653	22.0%
MOTOR VEHICLE THEFT	9	0.6%	25	0.4%	34	0.5%
OTHER ASSAULTS	113	7.1%	491	8.3%	604	8.0%
ARSON	0	0.0%	0	0.0%	0	0.0%
FORGERY & COUNTERFEITING	0	0.0%	8	0.1%	8	0.1%
FRAUD	1	0.1%	18	0.3%	19	0.3%
EMBEZZLEMENT	1	0.1%	0	0.0%	1	0.0%
VANDALISM	0	0.0%	0	0.0%	0	0.0%
WEAPONS; CARRYING, POSSESSING, ETC.	7	0.4%	22	0.4%	29	0.4%
PROSTITUTION AND COMMERCIALIZED VICE	0	0.0%	3	0.1%	3	0.0%
SEX OFFENSES (EXCEPT FORCED RAPE & PROSTITUTION)	4	0.3%	5	0.1%	9	0.1%
<b>DRUG ABUSE VIOLATIONS GRAND TOTAL</b>	<b>106</b>	<b>6.6%</b>	<b>536</b>	<b>9.1%</b>	<b>642</b>	<b>8.5%</b>
<b>(1) SALE/MANUFACTURING SUBTOTAL</b>	<b>106</b>	<b>6.6%</b>	<b>14</b>	<b>0.2%</b>	<b>120</b>	<b>1.6%</b>
OPIUM, COCAINE AND THEIR DERIVATIVES	8	0.5%	14	0.2%	22	0.3%
MARIJUANA	98	6.1%	0	0.0%	98	1.3%
SYNTHETIC/MANUFACTURED DRUGS	0	0.0%	0	0.0%	0	0.0%
OTHER DANGEROUS NON-NARCOTIC DRUGS	0	0.0%	0	0.0%	0	0.0%
<b>(2) POSSESSION SUBTOTAL</b>	<b>106</b>	<b>6.6%</b>	<b>522</b>	<b>8.8%</b>	<b>628</b>	<b>8.4%</b>
OPIUM, COCAINE AND THEIR DERIVATIVES	8	0.5%	87	1.5%	95	1.3%
MARIJUANA	98	6.1%	435	7.3%	533	7.1%
SYNTHETIC/MANUFACTURED DRUGS	0	0.0%	0	0.0%	0	0.0%
OTHER DANGEROUS NON-NARCOTIC DRUGS	0	0.0%	0	0.0%	0	0.0%
<b>GAMBLING GRAND TOTAL</b>	<b>0</b>	<b>0.0%</b>	<b>0</b>	<b>0.0%</b>	<b>0</b>	<b>0.0%</b>
BOOKMAKING (HORSE AND SPORT BOOK)	0	0.0%	0	0.0%	0	0.0%
NUMBERS AND LOTTERY	0	0.0%	0	0.0%	0	0.0%
ALL OTHER GAMBLING	0	0.0%	0	0.0%	0	0.0%
OFFENSES AGAINST FAMILY AND CHILDREN	0	0.0%	22	0.4%	22	0.3%
DRIVING UNDER THE INFLUENCE	12	0.8%	763	12.9%	775	10.3%
LIQUOR LAWS	3	0.2%	30	0.5%	33	0.4%
DRUNKNESS	76	4.8%	1819	30.7%	1895	25.2%
DISORDERLY CONDUCT	16	1.0%	105	1.8%	121	1.6%
VAGRANCY	30	1.9%	0	0.0%	30	0.4%
ALL OTHER OFFENSES (EXCEPT TRAFFIC)	75	4.7%	818	13.8%	893	11.9%
CURFEW AND LOITERING LAW VIOLATIONS	0	0.0%	0	0.0%	0	0.0%
RUN-AWAYS	416	26.0%	0	0.0%	416	5.5%
<b>Totals</b>	<b>1598</b>	<b>100.0%</b>	<b>5920</b>	<b>100.0%</b>	<b>7518</b>	<b>100.00%</b>



## Juvenile Arrest Data 2010

CLASSIFICATION OF OFFENSES	< 10		10-12		13-14		15		16		17		TOTAL COMBINED	M	F
GENDER	M	F	M	F	M	F	M	F	M	F	M	F			
MURDER & NON-NEGLIGENT MANSLAUGHTER	0	0	0	0	0	0	0	0	0	0	0	0	0	0	0
MANSLAUGHTER BY NEGLIGENCE	0	0	0	0	0	0	0	0	0	0	0	0	0	0	0
FORCIBLE RAPE	0	0	0	0	0	0	0	0	0	0	0	0	0	0	0
ROBBERY	0	0	0	0	0	1	3	2	6	0	19	1	32	28	4
AGGRAVATED ASSAULT	0	0	2	0	4	0	2	1	6	0	5	0	20	19	1
BURGLARY-BREAKING OR ENTERING	0	0	5	0	11	0	20	0	7	1	9	0	53	52	1
LARCENY-THEFT (EXCEPT MOTOR VEHICLE)	0	3	15	20	56	42	61	67	95	71	80	114	624	307	317
MOTOR VEHICLE THEFT	0	0	0	0	0	0	0	1	3	0	4	1	9	7	2
OTHER ASSAULTS	0	0	6	3	20	8	19	10	17	6	14	10	113	76	37
ARSON	0	0	0	0	0	0	0	0	0	0	0	0	0	0	0
FORGERY & COUNTERFEITING	0	0	0	0	0	0	0	0	0	0	0	0	0	0	0
FRAUD	0	0	0	0	0	0	0	0	1	0	0	0	1	1	0
EMBEZZLEMENT	0	0	0	0	0	0	1	0	0	0	0	0	1	1	0
VANDALISM	0	0	0	0	0	0	0	0	0	0	0	0	0	0	0
WEAPONS; CARRYING, POSSESSING, ETC.	0	0	0	0	1	0	1	0	2	0	3	0	7	7	0
PROSTITUTION AND COMMERCIALIZED VICE	0	0	0	0	0	0	0	0	0	0	0	0	0	0	0
SEX OFFENSES (EXCEPT FORCED RAPE & PROSTITUTION)	0	0	0	0	2	0	1	0	0	0	1	0	4	4	0
DRUG ABUSE VIOLATIONS GRAND TOTAL	0	0	1	0	11	3	11	2	19	4	45	10	106	87	19
(1) SALE/MANUFACTURING SUBTOTAL	0	0	0	0	0	0	0	0	0	0	0	0	0	0	0
OPIUM, COCAINE AND THEIR DERIVATIVES	0	0	0	0	0	0	0	0	0	0	0	0	0	0	0
MARIJUANA	0	0	0	0	0	0	0	0	0	0	0	0	0	0	0
SYNTHETIC/MANUFACTURED DRUGS	0	0	0	0	0	0	0	0	0	0	0	0	0	0	0
OTHER DANGEROUS NON-NARCOTIC DRUGS	0	0	0	0	0	0	0	0	0	0	0	0	0	0	0
(2) POSSESSION SUBTOTAL	0	0	1	0	11	3	11	2	19	4	45	10	106	87	19
OPIUM, COCAINE AND THEIR DERIVATIVES	0	0	0	0	1	0	0	0	1	0	4	2	8	6	2
MARIJUANA	0	0	1	0	10	3	11	2	18	4	41	8	98	81	17
SYNTHETIC/MANUFACTURED DRUGS	0	0	0	0	0	0	0	0	0	0	0	0	0	0	0
OTHER DANGEROUS NON-NARCOTIC DRUGS	0	0	0	0	0	0	0	0	0	0	0	0	0	0	0
GAMBLING GRAND TOTAL	0	0	0	0	0	0	0	0	0	0	0	0	0	0	0
BOOKMAKING (HORSE AND SPORT BOOK)	0	0	0	0	0	0	0	0	0	0	0	0	0	0	0
NUMBERS AND LOTTERY	0	0	0	0	0	0	0	0	0	0	0	0	0	0	0
ALL OTHER GAMBLING	0	0	0	0	0	0	0	0	0	0	0	0	0	0	0
OFFENSES AGAINST FAMILY AND CHILDREN	0	0	0	0	0	0	0	0	0	0	0	0	0	0	0
DRIVING UNDER THE INFLUENCE	0	0	0	0	0	1	1	2	0	0	6	2	12	7	5
LIQUOR LAWS	0	0	0	0	0	0	0	0	0	3	0	0	3	0	3
DRUNKNESS	0	0	0	0	1	4	6	4	9	1	43	8	76	59	17
DISORDERLY CONDUCT	3	2	3	0	4	1	1	2	0	0	0	0	16	11	5
VAGRANCY	0	0	4	0	2	1	2	1	4	0	14	2	30	26	4
ALL OTHER OFFENSES (EXCEPT TRAFFIC)	0	0	3	0	21	3	11	3	12	5	16	1	75	63	12
CURFEW AND LOITERING LAW VIOLATIONS	0	0	0	0	0	0	0	0	0	0	0	0	0	0	0
RUN-AWAYS	1	0	11	7	47	91	46	89	44	78	0	2	416	149	267
TOTAL ARRESTS															<b>1598</b>

## Adult-Male Arrest Data 2010

CLASSIFICATION OF OFFENSES	18	19	20	21	22	23	24	25-29	30-34	35-39	40-44	45-49	50-54	55-59	60-64	65+	TOTAL
MURDER & NON-NEGLIGENT MANSLAUGHTER	0	0	1	1	1	0	0	2	0	1	0	1	0	0	0	0	7
MANSLAUGHTER BY NEGLIGENCE	0	0	0	0	0	0	0	0	0	0	0	1	0	0	0	0	1
FORCIBLE RAPE	0	0	0	1	0	0	0	1	2	0	0	0	1	0	0	0	5
ROBBERY	9	2	3	1	4	4	1	14	9	5	3	1	0	0	0	0	56
AGGRAVATED ASSAULT	1	6	6	4	2	2	2	12	12	7	4	1	4	0	1	2	66
BURGLARY-BREAKING OR ENTERING	10	7	6	4	2	4	3	11	6	7	2	2	1	1	0	0	66
LARCENY-THEFT (EXCEPT MOTOR VEHICLE)	65	64	33	24	35	21	15	54	51	31	39	17	10	6	2	4	471
MOTOR VEHICLE THEFT	0	0	1	2	0	0	2	6	9	0	1	0	0	0	0	0	21
OTHER ASSAULTS	15	15	12	19	22	14	22	78	60	50	31	27	13	8	3	2	391
ARSON	0	0	0	0	0	0	0	0	0	0	0	0	0	0	0	0	0
FORGERY & COUNTERFEITING	0	0	0	0	0	0	0	0	0	0	0	0	0	0	0	0	0
FRAUD	2	0	1	0	0	0	1	0	2	2	1	2	0	0	0	0	11
EMBEZZLEMENT	0	0	0	0	0	0	0	0	0	0	0	0	0	0	0	0	0
VANDALISM	0	0	0	0	0	0	0	0	0	0	0	0	0	0	0	0	0
WEAPONS: CARRYING, POSSESSING, ETC.	3	1	2	3	1	1	0	4	3	2	0	0	0	0	1	0	21
PROSTITUTION AND COMMERCIALIZED VICE	0	0	0	0	0	0	0	0	0	0	2	0	0	0	0	0	2
SEX OFFENSES (EXCEPT FORCED RAPE & PROSTITUTION)	0	0	0	0	0	0	1	1	0	0	0	1	0	0	1	0	4
DRUG ABUSE VIOLATIONS GRAND TOTAL	55	56	50	35	33	20	29	80	54	34	19	5	6	3	0	0	479
(1) SALE/MANUFACTURING SUBTOTAL	0	0	2	1	0	0	0	1	0	4	2	0	1	0	0	0	11
OPIUM, COCAINE AND THEIR DERIVATIVES	0	0	2	1	0	0	0	1	0	4	2	0	1	0	0	0	11
MARIJUANA	0	0	0	0	0	0	0	0	0	0	0	0	0	0	0	0	0
SYNTHETIC/MANUFACTURED DRUGS	0	0	0	0	0	0	0	0	0	0	0	0	0	0	0	0	0
OTHER DANGEROUS NON-NARCOTIC DRUGS	0	0	0	0	0	0	0	0	0	0	0	0	0	0	0	0	0
(2) POSSESSION SUBTOTAL	55	56	48	34	33	20	29	79	54	30	17	5	5	3	0	0	468
OPIUM, COCAINE AND THEIR DERIVATIVES	3	10	5	7	6	2	6	8	13	9	5	4	0	1	0	0	79
MARIJUANA	52	46	43	27	27	18	23	71	41	21	12	1	5	2	0	0	389
SYNTHETIC/MANUFACTURED DRUGS	0	0	0	0	0	0	0	0	0	0	0	0	0	0	0	0	0
OTHER DANGEROUS NON-NARCOTIC DRUGS	0	0	0	0	0	0	0	0	0	0	0	0	0	0	0	0	0
GAMBLING GRAND TOTAL	0	0	0	0	0	0	0	0	0	0	0	0	0	0	0	0	0
BOOKMAKING (HORSE AND SPORT BOOK)	0	0	0	0	0	0	0	0	0	0	0	0	0	0	0	0	0
NUMBERS AND LOTTERY	0	0	0	0	0	0	0	0	0	0	0	0	0	0	0	0	0
ALL OTHER GAMBLING	0	0	0	0	0	0	0	0	0	0	0	0	0	0	0	0	0
OFFENSES AGAINST FAMILY AND CHILDREN	0	0	1	0	2	1	1	4	2	2	1	2	0	0	0	0	16
DRIVING UNDER THE INFLUENCE	21	33	30	38	40	28	29	131	89	67	39	23	14	3	4	2	591
LIQUOR LAWS	4	7	6	1	0	2	1	1	0	0	0	0	1	0	0	0	23
DRUNKNESS	59	84	81	117	94	90	87	276	174	119	101	111	54	38	17	11	1513
DISORDERLY CONDUCT	1	4	6	3	7	6	4	22	9	3	1	3	3	0	1	1	74
VAGRANCY	0	0	0	0	0	0	0	0	0	0	0	0	0	0	0	0	0
ALL OTHER OFFENSES (EXCEPT TRAFFIC)	25	34	44	43	41	41	37	141	98	57	50	34	15	5	6	2	673
TOTAL																	4491

## Adult-Female Arrest Data 2010

CLASSIFICATION OF OFFENSES	18	19	20	21	22	23	24	25-29	30-34	35-39	40-44	45-49	50-54	55-59	60-64	65+	TOTAL
MURDER & NON-NEGLIGENT MANSLAUGHTER	0	0	0	0	0	0	0	0	0	0	0	0	0	0	0	0	0
MANSLAUGHTER BY NEGLIGENCE	0	0	0	0	0	0	0	0	0	0	0	0	0	0	0	0	0
FORCIBLE RAPE	0	0	0	0	0	0	0	0	0	0	0	0	0	0	0	0	0
ROBBERY	4	0	1	1	0	2	0	0	0	1	2	0	0	0	0	0	11
AGGRAVATED ASSAULT	0	0	1	0	1	1	0	3	2	1	0	0	0	0	0	0	9
BURGLARY-BREAKING OR ENTERING	0	1	0	1	2	0	0	1	1	0	0	0	0	0	0	0	6
LARCENY-THEFT (EXCEPT MOTOR VEHICLE)	87	66	44	27	35	13	24	82	59	41	31	15	14	9	5	6	558
MOTOR VEHICLE THEFT	0	1	0	2	0	0	0	0	1	0	0	0	0	0	0	0	4
OTHER ASSAULTS	6	11	7	6	9	7	9	19	10	8	5	2	0	1	0	1	101
ARSON	0	0	0	0	0	0	0	0	0	0	0	0	0	0	0	0	0
FORGERY & COUNTERFEITING	0	0	0	0	0	0	0	0	2	1	0	0	0	0	0	0	3
FRAUD	0	0	1	0	0	0	0	3	1	0	1	0	0	0	1	0	7
EMBEZZLEMENT	0	0	0	0	0	0	0	0	0	0	0	0	0	0	0	0	0
VANDALISM	0	0	0	0	0	0	0	0	0	0	0	0	0	0	0	0	0
WEAPONS; CARRYING, POSSESSING, ETC.	0	0	0	0	0	0	0	0	0	1	0	0	0	0	0	0	1
PROSTITUTION AND COMMERCIALIZED VICE	0	0	0	0	0	0	0	0	0	0	1	0	0	0	0	0	1
SEX OFFENSES (EXCEPT FORCED RAPE & PROSTITUTION)	0	0	0	0	0	0	0	0	0	0	0	1	0	0	0	0	1
DRUG ABUSE VIOLATIONS GRAND TOTAL	6	8	8	3	1	1	3	9	9	4	2	2	1	0	0	0	57
(1) SALE/MANUFACTURING SUBTOTAL	0	0	1	0	0	0	0	0	2	0	0	0	0	0	0	0	3
OPIUM, COCAINE AND THEIR DERIVATIVES	0	0	1	0	0	0	0	0	0	2	0	0	0	0	0	0	3
MARIJUANA	0	0	0	0	0	0	0	0	0	0	0	0	0	0	0	0	0
SYNTHETIC/MANUFACTURED DRUGS	0	0	0	0	0	0	0	0	0	0	0	0	0	0	0	0	0
OTHER DANGEROUS NON-NARCOTIC DRUGS	0	0	0	0	0	0	0	0	0	0	0	0	0	0	0	0	0
(2) POSSESSION SUBTOTAL	6	8	7	3	1	1	3	9	8	3	2	2	1	0	0	0	54
OPIUM, COCAINE AND THEIR DERIVATIVES	0	3	1	1	0	0	0	2	0	0	0	1	0	0	0	0	8
MARIJUANA	6	5	6	2	1	1	3	7	8	3	2	1	1	0	0	0	46
SYNTHETIC/MANUFACTURED DRUGS	0	0	0	0	0	0	0	0	0	0	0	0	0	0	0	0	0
OTHER DANGEROUS NON-NARCOTIC DRUGS	0	0	0	0	0	0	0	0	0	0	0	0	0	0	0	0	0
GAMBLING GRAND TOTAL	0	0	0	0	0	0	0	0	0	0	0	0	0	0	0	0	0
BOOKMAKING (HORSE AND SPORT BOOK)	0	0	0	0	0	0	0	0	0	0	0	0	0	0	0	0	0
NUMBERS AND LOTTERY	0	0	0	0	0	0	0	0	0	0	0	0	0	0	0	0	0
ALL OTHER GAMBLING	0	0	0	0	0	0	0	0	0	0	0	0	0	0	0	0	0
OFFENSES AGAINST FAMILY AND CHILDREN	0	0	0	0	1	0	0	3	1	1	0	0	0	0	0	0	6
DRIVING UNDER THE INFLUENCE	8	15	8	9	12	10	14	39	20	19	6	8	3	1	0	0	172
LIQUOR LAWS	4	1	0	0	0	0	0	2	0	0	0	0	0	0	0	0	7
DRUNKNESS	21	24	25	36	27	20	20	56	30	13	12	12	3	3	3	1	306
DISORDERLY CONDUCT	4	5	4	1	3	4	0	3	2	0	1	1	3	0	0	0	31
VAGRANCY	0	0	0	0	0	0	0	0	0	0	0	0	0	0	0	0	0
ALL OTHER OFFENSES (EXCEPT TRAFFIC)	8	11	2	12	7	8	6	38	27	14	10	0	1	1	0	0	145
TOTAL																	1429

# APPENDICES

## UNIFORM CRIME REPORTING OFFENSES

Offenses in Uniform Crime Reporting are divided into two groups designated as Part I and Part II offenses. Offense and arrest information is reported for the Part I offenses, while only arrest information is reported for Part II offenses.

### **Part I Offenses**

---

**Criminal Homicide** – (a) Murder and non-negligent manslaughter: All willful felonious homicides as distinguished from deaths caused by negligence. Excluded are attempts to kill, assaults, to kill, suicides, accidental deaths and justifiable homicides. Justifiable homicides are limited to: the killing of a person by a law enforcement officer in the line of duty; and the killing of a person in the act of committing a felony by a private citizen; (b) Manslaughter by negligence: any death which the police investigation established was primarily attributable to gross negligence of some individual other than the victim.

**Murder and Non-Negligent Manslaughter** – The willful (non-negligent) killing of one human being by another. This includes any death due to injuries received in a fight, argument, quarrel, assault, or commission of a crime. Suicides, accidental deaths, assaults to murder, traffic fatalities and attempted murders are not included.

**Justifiable Homicide** – The killing of a person by a law enforcement officer in the line of duty; or the killing (during the commission of a felony) of a felon by a private citizen.

**Manslaughter by Negligence** – The killing of another person through gross negligence.

**Forcible Rape** – The carnal knowledge of a female forcibly and against her will.

**Robbery** – The taking or attempting to take anything of value from the care, custody, or control of a person or persons by force or threat of force or violence and/or by putting the victim in fear.

**Aggravated Assault** – An unlawful attack by one person upon another for the purpose of inflicting severe or aggravated bodily injury. This type of assault is usually accompanied by the use of a weapon or by means likely to produce death or great bodily harm.

**Burglary** – The unlawful entry of a structure to commit a felony or theft. This includes breaking and entering with intent to commit a larceny; housebreaking; safe cracking; and all attempts at these offenses.

**Larceny-Theft** – The unlawful taking, carrying, leading, or riding away of property from the possession or constructive possession of another. This includes pocket-picking, purse-snatching, shoplifting, theft from motor vehicles, theft of motor vehicle parts and accessories, theft of bicycles, theft from buildings, theft from coin-operated machines, and all thefts that don't fit into the above mentioned categories.

**Motor Vehicle Theft** – The theft or attempted theft of a motor vehicle, which is defined as a self-propelled vehicle that runs on land surface and not on rails.

# GLOSSARY OF TERMS

**Adult** – In Texas, an adult is a person 17 years of age or over. National law provides that adults are age 18 or over. Unless otherwise indicated, this publication follows the state definition.

**Cleared by Arrest or Exceptional Means** – For Uniform Crime Reporting purposes, an offense is cleared by arrest or solved when at least one person is arrested, charged with the commission of an offense and turned over to court for prosecution. In certain situations, police are not able to follow these three steps and, if the following four conditions can be met, the offense can be cleared exceptionally: (1) the investigation has definitely established the identity of the offender; (2) there is enough information to support an arrest, charge, and turning over to the court for prosecution; (3) the exact location of the offender is known so that he could be taken into custody; (4) there is some reason outside the police control that prevents the arresting, charging, and prosecuting of the offender.

**Crime Index** – The sum of seven index offenses used to measure the extent, fluctuation and distribution of a crime in a given geographical area. Crime classifications used in the Crime Index are: murder, rape, robbery, aggravated assault, burglary, larceny-theft and motor vehicle theft. While arson is also an index offense, it is not part of the Crime Index.

**Crime Rate** – The number of offenses per 100,000 inhabitants. To calculate a crime rate, divide the population by 100,000 and then divide the number of offenses by that answer. The crime rate is useful in determining the relative frequency of crime without regard to fluctuations in population.

**Index Crime** – A crime for which reports of offenses committed are collected. Index crimes are murder, rape, robbery, aggravated assault, burglary, larceny-theft, motor vehicle theft and arson.

**Juvenile** – In Texas, a juvenile is a person 16 years of age or under.

**Non-Violent Crime** – Property crimes; the index offenses of burglary, larceny-theft and motor vehicle theft.

**Personal Weapon** – The use of hands, feet, fists and teeth as a weapon to commit a crime; also termed strong-arm weapon.

**Strong-Arm Weapons** – The use of hands, feet, fists and teeth as a weapon to commit a crime. Also termed personal weapon.

**Threat** – A declared intent to inflict bodily harm on a person.

**Violent Crime** – Consists of the Index Offenses of murder, forcible rape, robbery and aggravated assault. Also referred to as crimes against persons.