

# Crime in McAllen 2005



**The City of McAllen Crime Report**



McAllen Police Department  
Crime Records Bureau

# **Crime in McAllen 2005**

McAllen Police Department

Victor Rodriguez  
Chief of Police

## **Crime Records Bureau**

Lt. Oscar Garcia

Director

Crime Records Bureau

Carlos Wals

Crime Records Bureau  
Statistician Systems Analyst

**For inquiries regarding this report you may call the Crime Records  
Bureau at (956) 972-7328 or e-mail at [ojgarcia@mcallenpd.net](mailto:ojgarcia@mcallenpd.net)**

## Acknowledgements

*This report on Crime in McAllen was compiled from data submitted to the Crime Records Bureau by members of the McAllen Police Department and from data generated from calls for service.*

*This report is modeled after the Texas Department of Public Safety Annual Crime in Texas report. As such, format, crime analysis, and definitions have been similarly established in this report.*

# Table of Contents

<b>Chapter One –City of McAllen Crime Analysis</b> .....	1
<b>Chapter Two - Crime Trends and Analysis</b> .....	2
Violent and Property Crimes .....	4
Clearance Rates.....	5
Stolen/Recovered Property.....	6
Crime Clock.....	7
Crime in McAllen 1998-2005.....	8
Crime in Texas v. McAllen .....	9
McAllen: Crime Facts at a Glance 2005 .....	10
<b>Chapter Three – Index Crime Analysis</b>	
Murder.....	12
Rape.....	13
Robbery.....	15
Aggravated Assault.....	17
Burglary.....	19
Larceny/Theft.....	21
Motor Vehicle Theft.....	23
<b>Chapter Four – Selected Non-Index Crimes</b>	
Driving While Intoxicated Arrests.....	26
Drug Abuse Arrests.....	27
Drug Seizures.....	28
Weapons Arrests.....	29
<b>Chapter Five – Calls for Service</b>	
Calls for Service Time Clock.....	31
Calls for Service 2005 by percentage .....	32
Calls for Service 2005 by hour .....	33
<b>Chapter Six – Law Enforcement Personnel</b> .....	35
<b>Chapter Seven – McAllen Arrest Data</b> .....	37
<b>Appendices</b> .....	44
<b>Glossary of Terms</b> .....	45

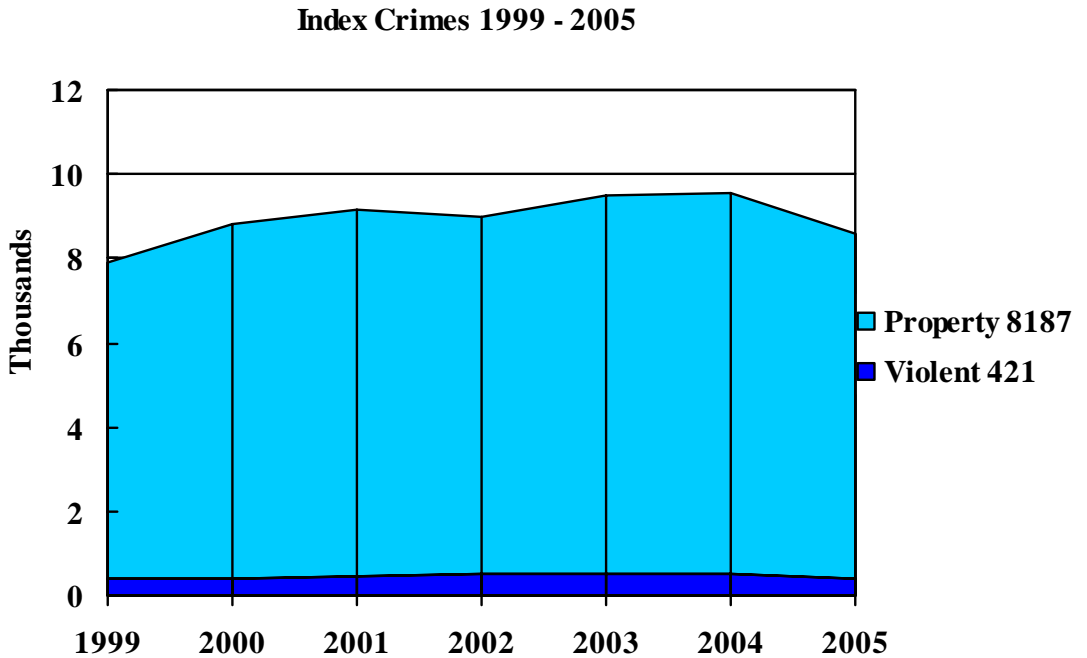
# City of McAllen Crime Analysis

## Crime Measurements

The City of McAllen Police Department participates in the Uniform Crime Reporting (UCR) Program. UCR makes possible measurement and analysis of crime index.

## Crime Index

Uniform Crime Reporting is the reporting of seven index crimes. The crimes in this group are all serious, either by their nature or because of the frequency of their occurrence. These crimes can be categorized as violent crimes or property crimes. Violent crimes include murder, forcible rape, robbery, and aggravated assault. Property crimes include burglary, larceny-theft, and motor vehicle theft.



## Crime Trends

Crime trends are analyzed using two separate methods, crime volume and crime rates.

Crime volume is the collective sum of the seven indexed crimes.

By comparing the volume of indexed crimes from year to year, trends can be evaluated.

Crime rates, on the other hand, are compiled to compensate for the changes in population and show the number of people affected by crime in a given population.

Crime rates are usually expressed in the number of crimes per 100,000 residents.

## Crime Volume

During the calendar year 2005, there was a total of 8608 index offenses in the City of McAllen. The crime index decreased 9.9 percent when compared to 2004.

McAllen Crime Volume by Offense				
	Offense	2005	2004	% Change
Violent Crimes	Murder	8	4	100%
	Rape	34	22	54.5%
	Robbery	129	154	-16.2%
	Aggravated Assault	250	360	-30.6%
	<b>Violent Crime Totals</b>	<b>421</b>	<b>540</b>	<b>-22%</b>
Property Crimes	Burglary	734	1004	-26.9%
	Theft	6877	7361	-6.6%
	Motor Vehicle Theft	576	649	-11%
	<b>Property Crimes Totals</b>	<b>8187</b>	<b>9014</b>	<b>-9.1%</b>
<b>Index Crime Totals</b>		<b>8608</b>	<b>9554</b>	<b>-9.9%</b>

## Crime Rate

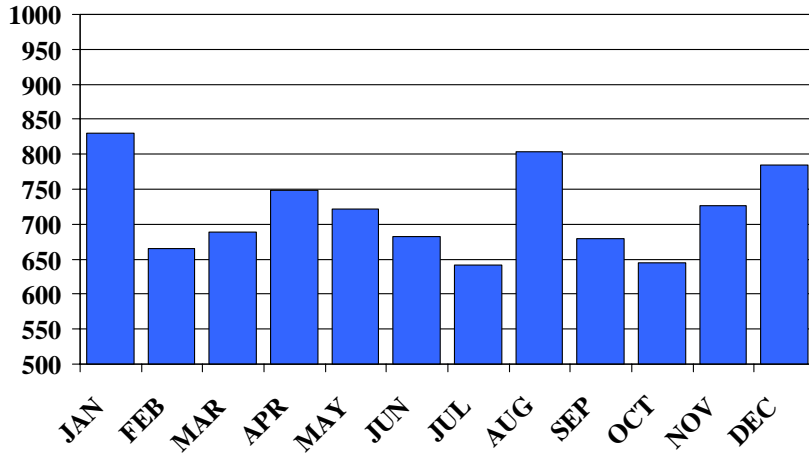
During the calendar year 2005, McAllen's crime rate was 6972.5 crimes per 100,000 persons. The crime rate decreased 12.1 percent.

McAllen Crime Rate by Offense				
	Offense	2005	2004	% Change
Violent Crimes	Murder	6.48	3.33	94.6%
	Rape	27.54	18.26	50.8%
	Robbery	104.49	127.82	-18.3%
	Aggravated Assault	202.5	298.8	-32.2%
	<b>Violent Crime Totals</b>	<b>341.01</b>	<b>448.2</b>	<b>-23.9%</b>
Property Crimes	Burglary	594.54	833.32	-28.7%
	Theft	5570.37	6109.63	-8.8%
	Motor Vehicle Theft	466.56	538.67	-13.4%
	<b>Property Crimes Totals</b>	<b>6631.47</b>	<b>7481.62</b>	<b>-11.4%</b>
<b>Index Crime Totals</b>		<b>6972.48</b>	<b>7929.82</b>	<b>-12.1%</b>

# Annual Crime Trends

The highest month for crime was January with 830 part 1 crimes reported. The lowest month of reported crime for 2005 was July with 641 part 1 crimes reported.

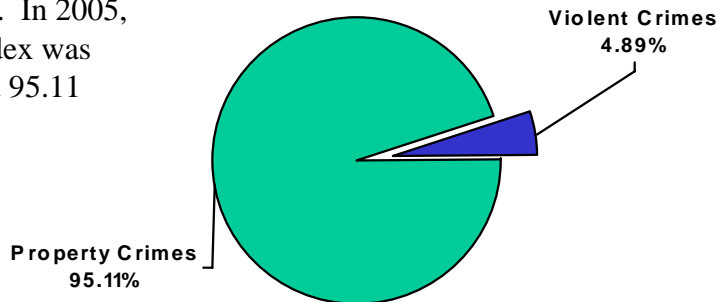
**Index Crimes By Month 2005**



---

## Type of Crime

Crime analysis usually looks at the two categories of crime mentioned before: Violent crimes (or crimes against persons) and property crimes. In 2005, 4.89 percent of the Crime Index was made up of violent crime and 95.11 percent was property crime.

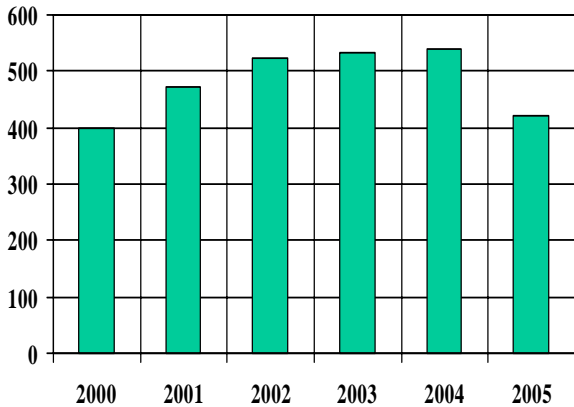


**Type of Crime in McAllen 2005**

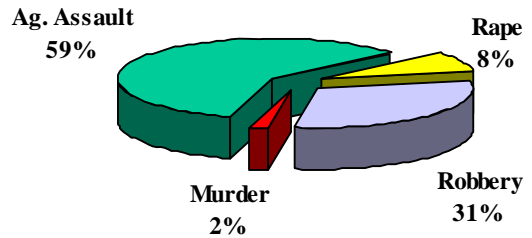
## Violent Crimes

Violent Crimes involve the element of personal confrontation between the perpetrator and the victim. Because of their nature, violent crimes are considered to be more serious than property crimes. 421 violent crimes occurred during 2005, which is a decrease of 22 percent from 2004. The violent crime rate for 2005 was 341.01 crimes per 100,000 residents, which was a decrease of 23.9 percent from 2004.

Violent Crimes 2000-2005



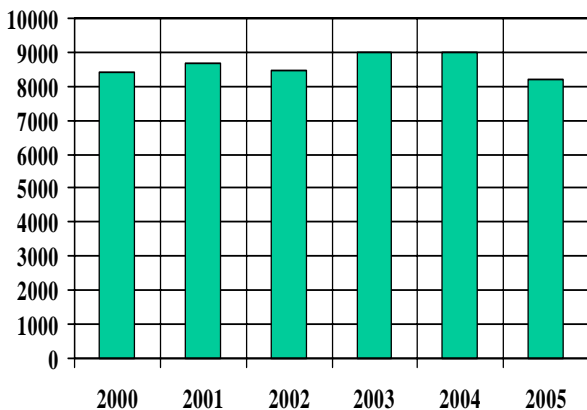
Violent Crime by Offense 2005



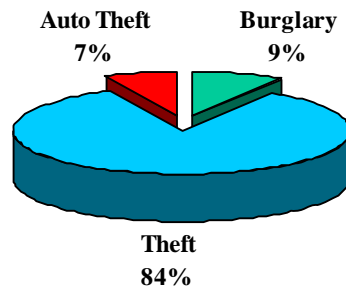
## Property Crimes

The number of property crimes occurring during 2005 was 8187. Property crimes decrease by 9.1 percent from 2004. Theft accounted for 84 percent of the property crime, followed by burglary at 9 percent, and then auto theft at 7 percent. The 2005 crime rate was 6631.47 property crimes per 100,000 citizens. This was a decrease of 11.4 percent when compared to 2004.

Property Crimes 2000-2005



Property Crime by Offense 2005



## Clearances

For Uniform Crime Reporting purposes, an offense is cleared when a law enforcement agency has identified the offender, enough evidence exists to press charges, and the subject is actually taken into custody. The arrest of one person can clear several crimes or several persons may be arrested in the process of clearing one offense. Law enforcement agencies may clear a crime by exceptional means when some element beyond law enforcement control precludes the placing of formal charges against the offender.

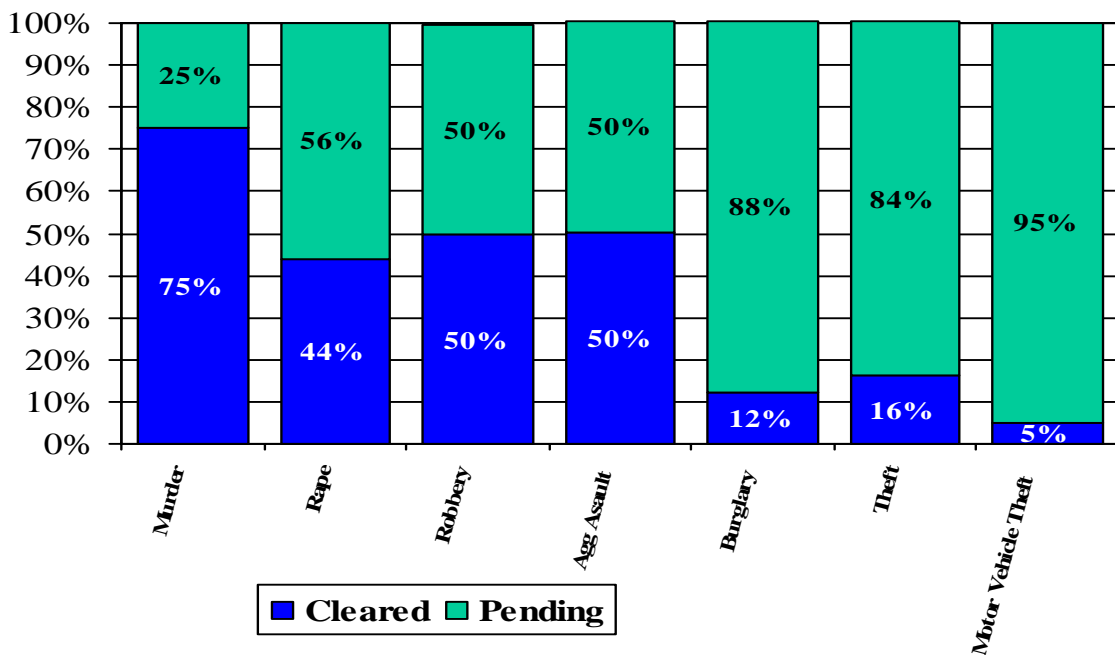
McAllen officers cleared 16.8% of all index Offenses reported in 2005 by arrest or exceptional means. Of the violent crimes reported, 49.6% were cleared while 15.1% of all property crimes were cleared.

In 2005, persons arrested under the age of 18 represented 28 % of all cases solved.

## State of Texas Clearance Rates vs. McAllen Clearance Rates January – June 2005

	State of Texas	McAllen
Murder	83%	66%
Rape	45%	45%
Robbery	26%	46%
Aggravated Assault	49%	48%
Burglary	11%	11%
Theft	17%	14.4%
Motor Vehicle Theft	15%	4%

## McAllen Index Crime Clearance Rates 2005

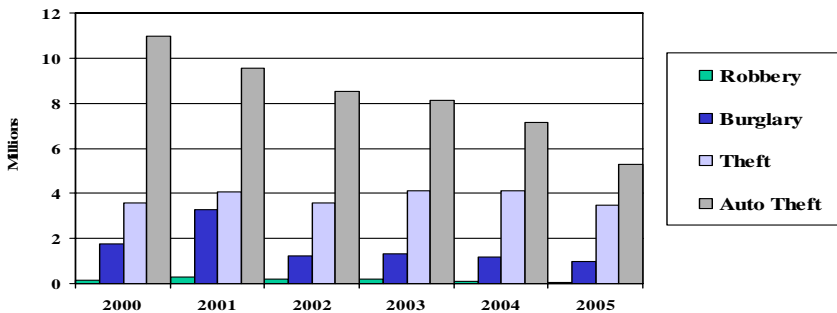


## Stolen Property Value

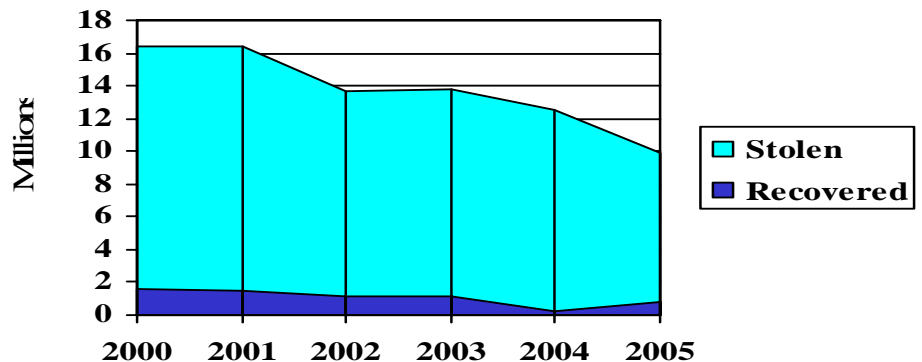
The total value of property stolen during 2005 in the City of McAllen was \$9,909,585. The amount stolen in 2004 was \$ 12,515,294. This represents a decrease of 20.8 percent.

Stolen Property by Type, Value and Total Recovered 2005		
Property Type	Stolen Value	Recovered
Currency	426,451	626
Jewelry	508,452	36,647
Clothing	162737	71,641
Motor Vehicles	4,420,049	474,264
Office Equipment	206,338	5,189
Television, Stereos, etc.	479,562	10,751
Firearms	25,635	0
Household Goods	94,944	0
Consumable Goods	15,941	252
Livestock	8534	0
Miscellaneous	3,560,942	151,729
<b>Total</b>	<b>9,909,585</b>	<b>751,099</b>

## Property Value Lost to Crime 2000-2005



## Total Property Lost 2000-2005



# McAllen Index Crime Clock 2005



One  
**INDEX CRIME  
OFFENSE**  
Every 1.02 hours

One  
**VIOLENT CRIME**  
every 20.81 hours

One  
**PROPERTY CRIME**  
Every 1.07 hours

One  
**MURDER**  
every 45.6 days

One  
**RAPE**  
every 10.7 days

One  
**ROBBERY**  
every 2.83 days

One  
**AGGRAVATED  
ASSAULT**  
Every 1.46 day

One  
**BURGLARY**  
Every 11.93 hours

One  
**THEFT**  
Every 1.27 hours

One  
**MOTOR VEHICLE  
THEFT**  
Every 15.21 hours

This mode of display represents the annual ratio of crime to fixed time intervals.

This is an aggregate representation of UCR data, it is designed to convey the annual reported crime experience by showing the relative frequency of occurrence of the Index Offenses.

# Crime in McAllen

## Comparison of Index Crimes for the Past Eight Years

Year	Pop.*	Index	Murder	Rape	Robbery	Aggravated Assault	Burglary	Larceny / Theft	Motor Vehicle Theft	Total
1998	104,958	Volume	7	12	112	199	1339	5653	926	8250
		Rate	6.67	11.43	106.71	189.6	1275.75	5385.96	884.16	7860.3
1999	109,298	Volume	5	12	120	241	1264	5365	901	7908
		Rate	4.57	10.98	109.79	220.5	1156.47	4908.6	824.35	7235.3
2000	112,390	Volume	2	1	116	279	1370	6163	856	8787
		Rate	1.78	0.89	103.21	248.24	1218.97	5483.58	761.63	7818.3
2001*	116,793	Volume	4	9	120	340	1604	6364	706	9147
		Rate	3.42	7.71	102.75	291.11	1373.37	5448.95	604.49	7831.8
2002*	116,793	Volume	5	12	179	330	1049	6739	672	8986
		Rate	4.3	10.3	153.3	282.6	898.2	5770	575.4	7693.1
2003*	116,952	Volume	6	29	145	353	916	7430	655	9534
		Rate	5.1	17.1	124	301.8	783.2	6353	535.5	8152.1
2004**	120,109	Volume	4	22	154	360	1004	7361	649	9554
		Rate	3.33	18.26	127.82	298.8	833.32	6109.63	538.67	7929.8
2005**	123,352	Volume	8	34	129	250	734	6877	576	8608
		Rate	6.48	27.54	104.49	202.5	594.54	5570.37	466.56	6972.5

The above chart lists the crime volume and crime rate for the City of McAllen for the past eight years. The “rate” reflects the number of crimes reported per 100,000 residents.

\* The population information was obtained from the City of McAllen Planning Department.

\*\* Crime rates for 2004 - 2005 are based on US Census 2000 population estimates.

# Crime in Texas vs. McAllen

First Six Months of 2005 as published by Department of Public Safety

## State-wide Crime Jan-Jun 2005 vs Jan-Jun 2004

<b>STATEWIDE</b>	<b>Jan-Jun 2005</b>	<b>Jan-Jun 2004</b>	<b>Volume Change</b>	<b>Rate Change</b>
Murder	676	650	4%	3.4%
Rape	4,099	4,265	-3.9%	-5.7%
Robbery	16,500	16,976	-2.8%	-4.4%
Aggravated Assault	37,582	37,019	1.5%	-0.2%
<b>Violent Crime</b>	<b>58,857</b>	<b>58,910</b>	<b>-0.9%</b>	<b>-1.7%</b>
Burglary	103,523	105,899	-2.2%	-3.9%
Theft	332,724	344,813	-3.5%	-5.1%
Motor Vehicle	44,187	46,347	-4.7%	-6.2%
<b>Property Crime</b>	<b>480,434</b>	<b>497,059</b>	<b>-3.3%</b>	<b>-4.9%</b>
<b>Index Crime Total</b>	<b>539,291</b>	<b>555,969</b>	<b>-3.0%</b>	<b>-4.6%</b>

## McAllen Crime Jan-Jun 2005 vs Jan-Jun 2004

	<b>Jan-Jun 2005</b>	<b>Jan-Jun 2004</b>	<b>Volume Change</b>	<b>Rate Change</b>
Murder	3	2	50%	46%
Rape	22	12	83%	79%
Robbery	67	80	-16%	-18%
Aggravated Assault	121	173	-30%	-32%
<b>Violent Crime</b>	<b>213</b>	<b>267</b>	<b>-20%</b>	<b>-22%</b>
Burglary	389	514	-24%	-26%
Theft	3389	3689	-8%	-10%
Motor Vehicle	336	302	11%	8%
<b>Property Crime</b>	<b>4114</b>	<b>4505</b>	<b>-8%</b>	<b>-11%</b>
<b>Total</b>	<b>4327</b>	<b>4772</b>	<b>-9%</b>	<b>-12%</b>

# McAllen

## Crime Facts at a Glance

### 2005

- There were an estimated 8608 index offenses reported in McAllen in 2005.
- The crime rate for the City of McAllen was 6972.5 index offenses per 100,000 inhabitants.
- During 2004, McAllen Police Officers made 7635 arrests. Of those arrests, 15.82 percent were 16 years of age or younger.
- The value of stolen property totaled \$9,909,585.
- The offense of larceny-theft accounted for 79.9 percent of all index crimes and had a clearance rate of 16.26 percent.
- Firearms were used in 37.5% of all murders reported.
- There were an estimated 250 aggravated assaults. Of these, 30.4 percent were committed with the use of knife or other cutting instrument.
- Residential burglaries accounted for 73 percent of all burglaries reported.
- The estimated number of motor vehicle thefts were 576, for a total dollar loss \$4,420,049.



# Index Crime Analysis

# Index Crime Analysis

## Murder

### Definition

Murder and non negligent manslaughter as defined in the UCR program is the willful killing of one human being by another.

This offense category includes any death due to a fight, argument, quarrel, assault or commission of a crime. Attempted murder and assaults with the intent to kill are not counted as murder, but are included in UCR as aggravated assault. Suicides, accidental deaths, and justifiable homicides are also excluded from the murder classification.

The classification of this offense as well as for all Index Crimes, is based solely on police investigation and not upon determinations by courts, medical examiners, coroners, juries or other judicial bodies.

### Analysis

#### **Volume**

The reported number of murders in McAllen was 8 in 2005. There was a 100 percent increase in the number of murders when compared to 2004. The murders occurred in the months of January, February, June, July, September, October, December.

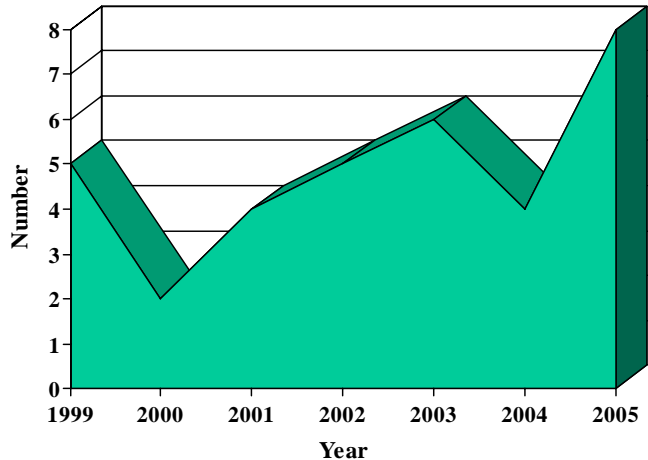
#### **Rate**

The murder rate for McAllen in 2005 was 6.48 murders committed for every 100,000 persons.

#### **Clearance**

In 2005, 75% percent of all murders were cleared by arrest or exceptional means.

**Murder 1999-2005**



### Case Synopsis

One murder occurred between 0000 hrs to 0100 hrs, one occurred between 1000 hrs to 1100 hrs, one occurred between 1700 hrs to 1800 hrs, one occurred between 1900 hrs to 2000 hrs, two occurred between 1800 hrs to 1900 hrs and two occurred between 0300 hrs to 0400 hrs.

Four of the murders occurred inside residences and four occurred outside residences. Three murders were committed using firearms, three by strangulation, and two murders were committed using a knife,

Victims included four Hispanic males, three Hispanic females and one white female. The victims ranged in age from 23 to 75 years of age.

Of the eight murders five have been cleared by arrest or exceptional means. Additionally a 2000 year murder was cleared by adult arrest. Bringing the total to 6 murders cleared this year.

# Rape

## Definition

Rape, as defined in the Uniform Crime Reporting Program, is the carnal knowledge of a female forcibly and against her will. Statistics reported in this crime category include assaults to commit forcible rape, however, statutory rape (rape against a female under the age of consent) and sexual assaults on males are excluded.

## Analysis

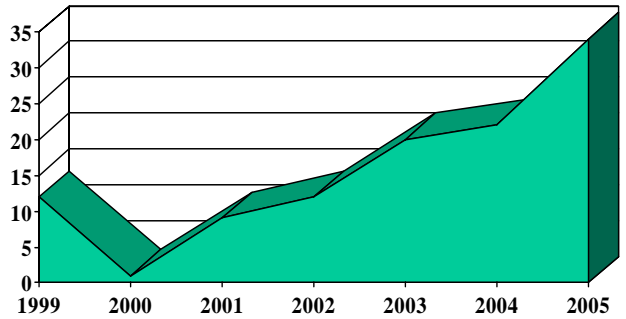
### Volume

The number of rapes committed in McAllen in 2005 was 34. This represents an increase of 54.5 percent when compared to 2004. More rapes were committed in March than any other month.

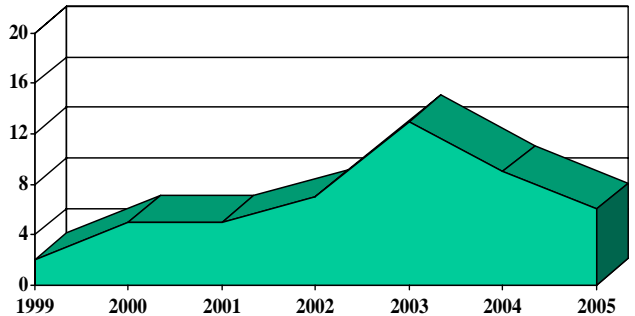
### Rate

The rape rate for McAllen was 27.54 rapes per 100,000 persons. The rape rate increased 50.8 percent from 2004.

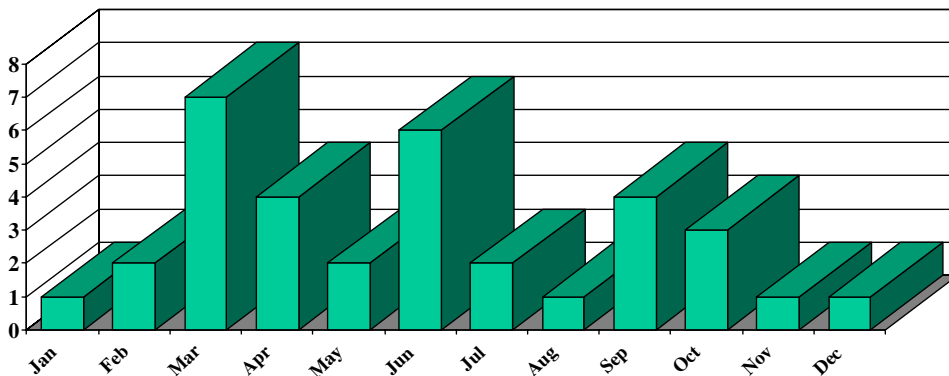
### Rape 1999-2005



### Rape Arrest 1999-2005



### Rape Offenses by Month 2005



## Nature of Rape

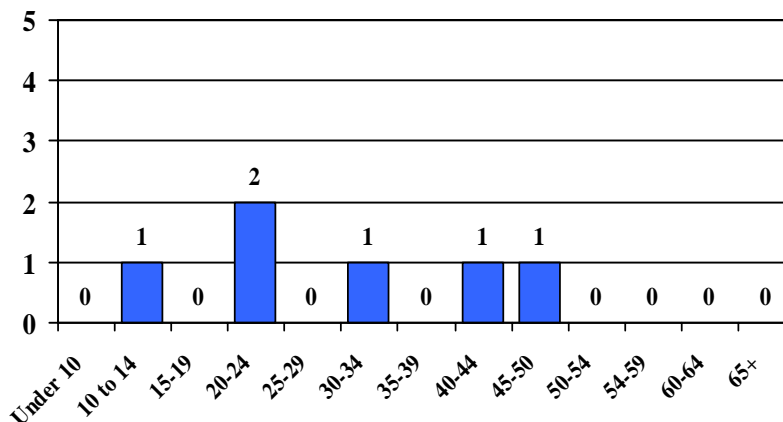
Forcible rape differs from other violent crimes because, in many cases, the victim is hesitant to report the offense to police. The rigors of court procedures, embarrassment and fear of any accompanying stigma exert a deterrent effect upon the victim's willingness to contact the police. The presence of prior relationship between the victim and offender may make the determination of force difficult to establish, while the usual clandestine nature of this crime presents a problem in verification. As attitudes toward the reporting of rape change, trends in the number of reported offenses can be expected to change correspondingly.

---

## Persons Arrested

Six people were arrested for rape in the year 2005. All of the subjects arrested were male. The age group of 20-24 had the highest number of subjects arrested, followed by the age groups of 10 to 14, 30-34, 40-44 and 45-50.

### Rape Arrestees by Age 2005



**All arrestees for this crime in 2005  
were male.**

# Robbery

## Definition

Robbery, in the Uniform Crime Reporting program, is defined as the taking or attempting to take anything of value from the care, custody, or control of a person or persons by force, threat of force or violence, or by putting the victim in fear.

Robbery is a violent crime that frequently results in injury to the victim. Included in this category are assaults to commit robbery and attempted robberies.

## Analysis

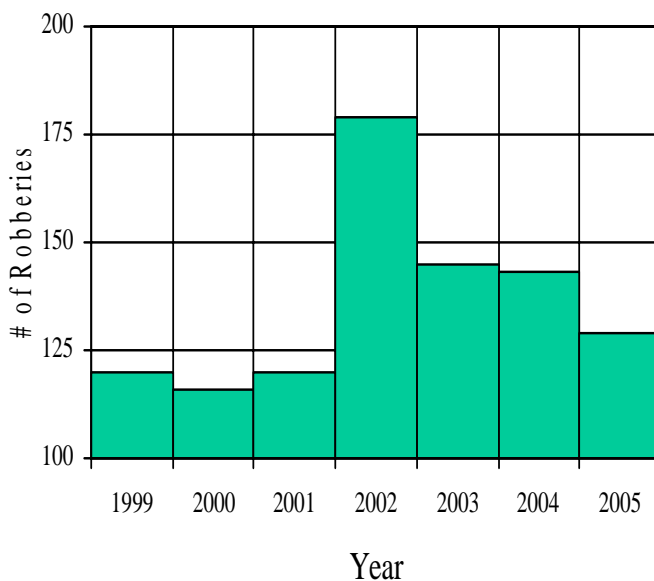
### Volume

The number of robberies committed in McAllen in 2005 was 129. This represents 16.2 percent decrease when compared to 2004. The month of May had the highest number of robberies, and the month of March and August had the lowest number of robberies.

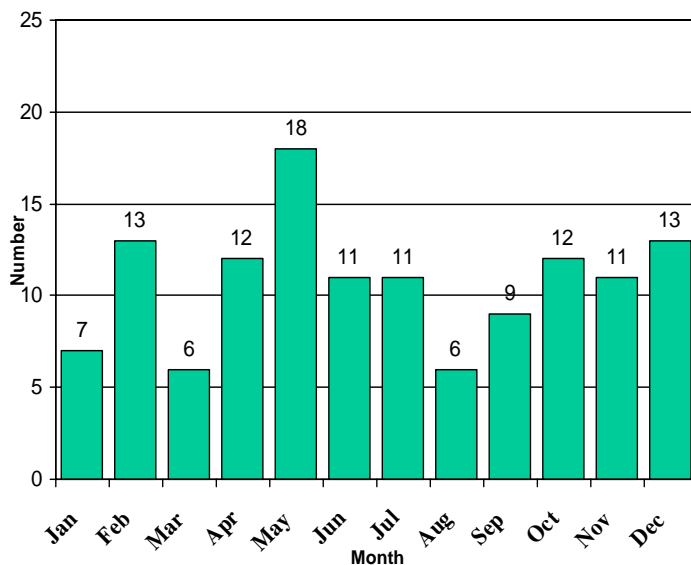
### Rate

The robbery rate for McAllen in 2005 was 104.49 robberies for every 100,000 persons. The change in the rate of robbery from 2004 was a decrease of 18.3 percent.

Robbery 1999-2005



Reported Robberies by Month 2005

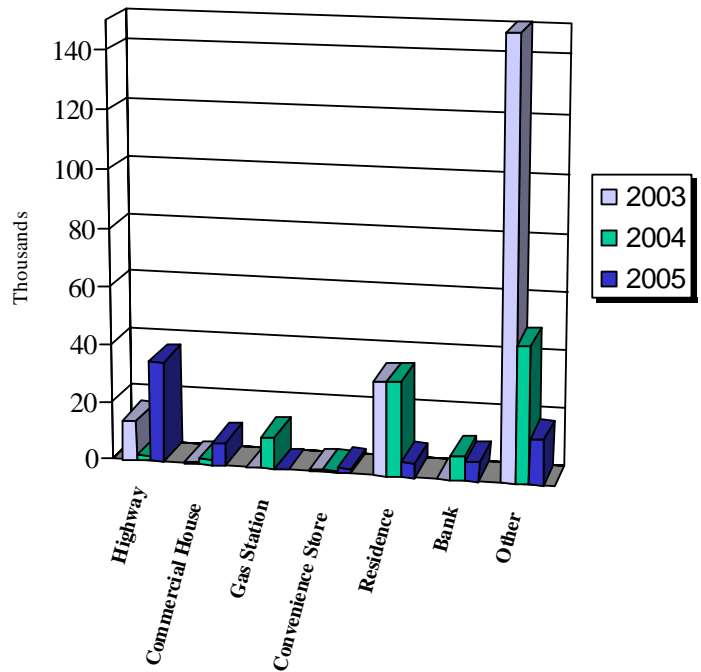


## Nature

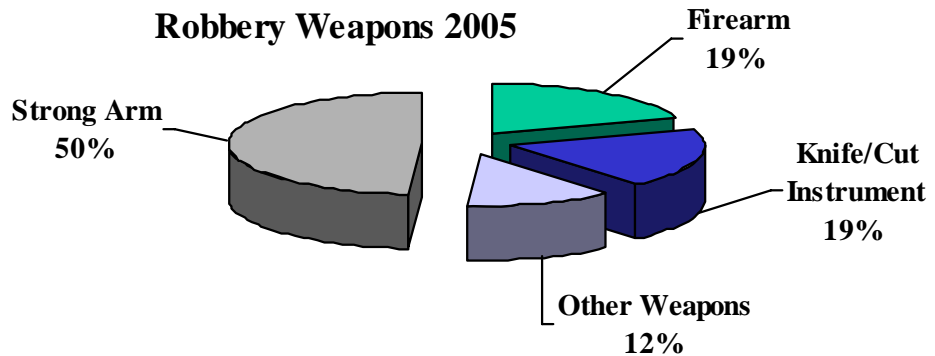
In 2005, property loss during the commission of robberies amounted to \$71,968. The amount stolen in dollar value during robberies averaged \$557.89 per incident.

Of all reported robberies in 2005, 50 percent were committed using strong arm tactics. Firearms were used in 19 percent of the robberies. Knives/Cutting Instruments were used in 19 percent of the robberies, and other dangerous weapons were used in 12 percent of the robberies.

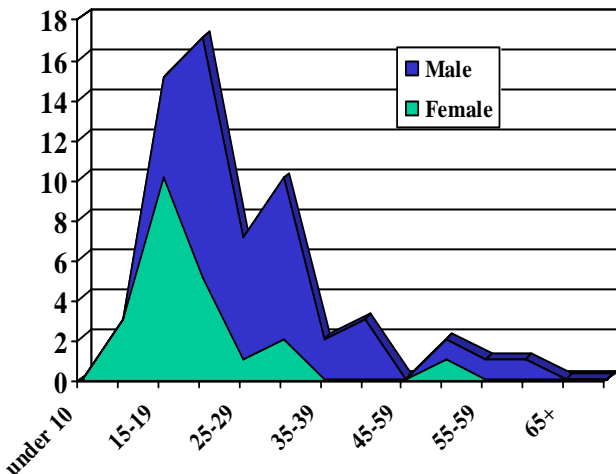
Robbery Value Losses by Location



Robbery Weapons 2005



Robbery Arrestees by Age and Gender 2005



## Persons Arrested

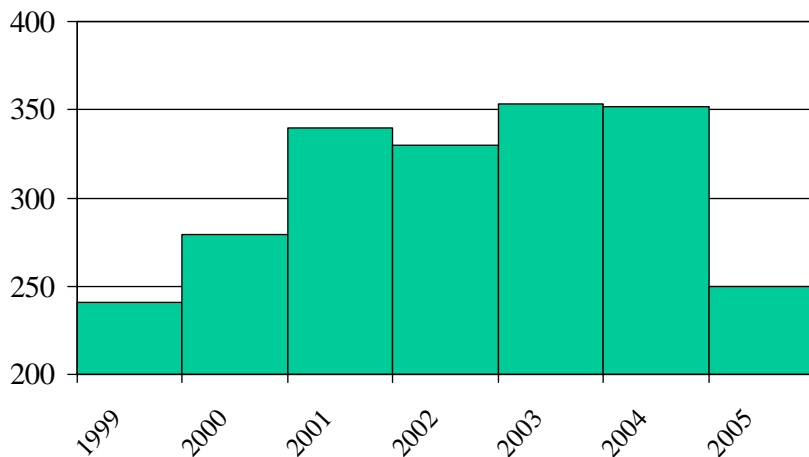
The number of persons arrested for robbery in 2005 totaled 61. The age group representing the largest number of robbery arrestees was the 15-19 year-old group.

# Aggravated Assault

## Definition

Aggravated Assault is defined in the Uniform Crime Reporting program as an unlawful attack by one person upon another for the purpose of inflicting severe or aggravated bodily injury. This type of assault is usually accompanied by the use of a weapon or by means likely to produce death or great bodily harm. Statistics for aggravated assault include attempts to commit aggravated assault.

### Aggravated Assault 1999-2005



## Analysis

### Volume

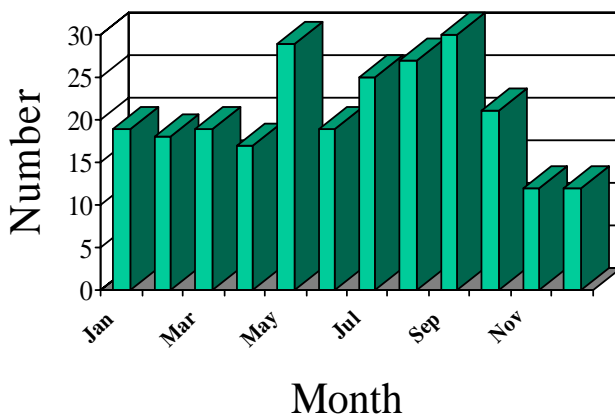
The number of aggravated assaults committed in 2005 was 250. This represents a 30.6 percent decrease from the 360 reported in 2004.

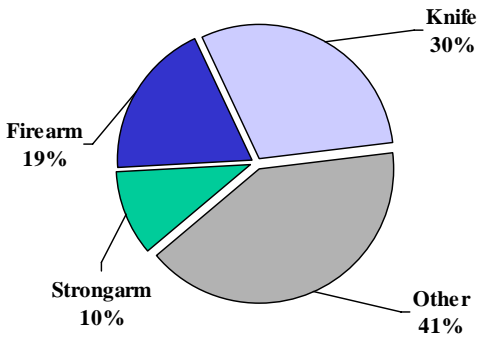
More aggravated assaults occurred in September than any other month, and December had the fewest aggravated assaults.

### Rate

The aggravated assault rate for McAllen in 2005 was 202.5 per 100,000 persons. The rate decreased 32.2 percent from 2004.

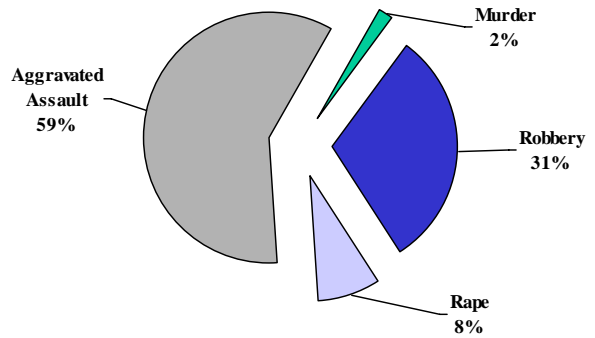
### Aggravated Assault by Month 2005





**Aggravated Assault Weapons**

**Aggravated Assault as a Percentage of all Violent Crimes**



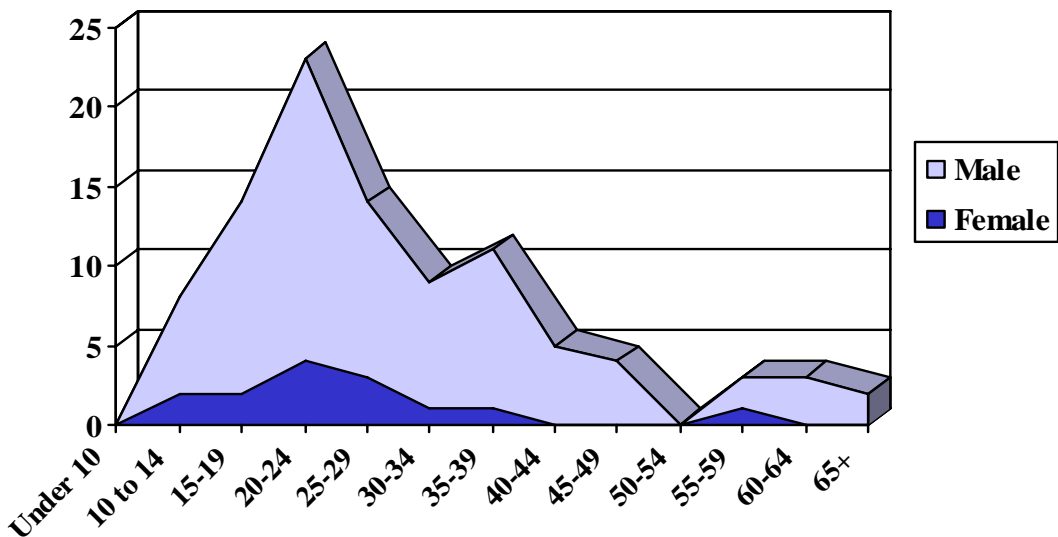
**Nature**

Of all aggravated assaults, 19 percent were committed with the use of a firearm. Strong arm tactics represented 10 percent. Knives or other cutting instruments were used in 30 percent of the aggravated assaults, and other dangerous weapons were used in the remaining 41 percent. The use or attempted use of a dangerous weapon in an assault or the serious injury inflicted by hands, fists or feet is what separates this index offense from assaults categorized as “simple assaults.” Citizens of McAllen reported 1903 simple assaults in 2005.

**Persons Arrested**

McAllen Law Enforcement officers arrested 96 people for aggravated assault in 2005. Of the persons arrested 14 of the perpetrators were female, and 82 were male. The age group with the highest number of aggravated assault arrestees was the age group between 20-24 for males and the age group between 20-24 for females.

**Aggravated Assault Arrestees by Age and Gender**



# Burglary

## Definition

Burglary, for Uniform Crime Reporting purposes, is the unlawful entry of a structure with the intent to commit a felony or a theft. While the use of force to gain entry is not required to classify an offense as burglary, attempted forcible entries to commit burglary are counted in this crime's statistics.

## Analysis

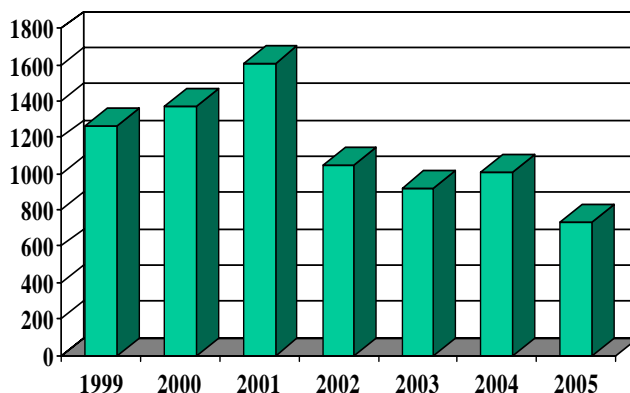
### Volume

The number of burglaries committed in McAllen in 2005 was 734. This represents a 26.9 percent decrease when compared to the burglaries committed in 2004. More burglaries were committed in August than any other month. The month with the fewest burglaries was December.

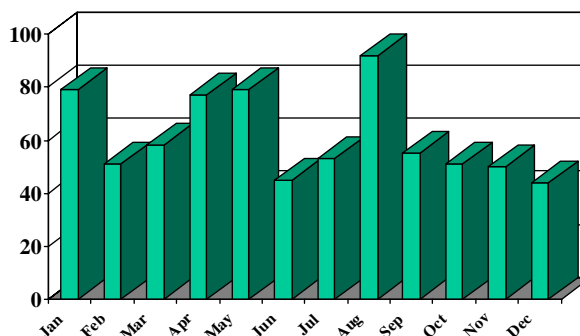
### Rate

The 2005 burglary rate was 594.54 burglaries for every 100,000 persons. The change in the burglary rate from 2004 shows an decrease of 28.7 percent.

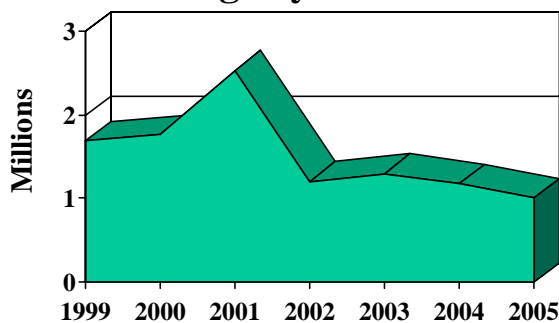
### Burglary Offenses 1999-2005



### Burglary by Month 2005



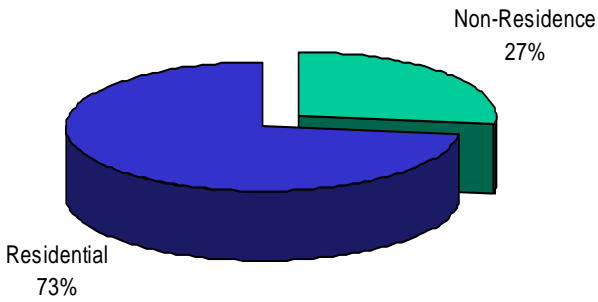
### Value Lost to Burglary 1999-2005



## Value

In 2005, McAllen burglary victims suffered losses totaling \$1,002,207. This total represented a decrease of 15.1 percent.

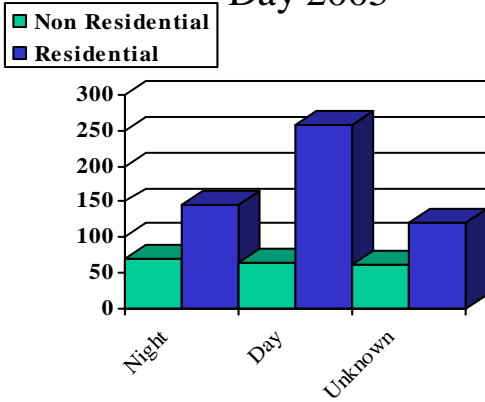
### Burglary by Location 2005



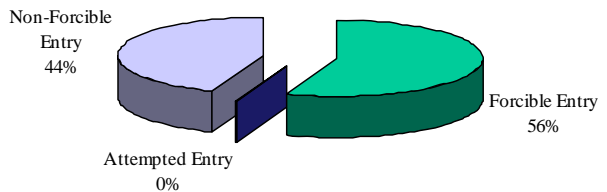
### Nature

Of all reported burglaries in 2005, 73 percent occurred, at residences. Forcible entry accounted for 56 percent of all burglaries, while 44 percent were unlawful entries without force, and the remainder were forcible entry attempts. Of the offenses for which the time of occurrence was known, 29.15 percent occurred during the day, and 44 occurred during the night.

### Burglary Offenses by Time of Day 2005



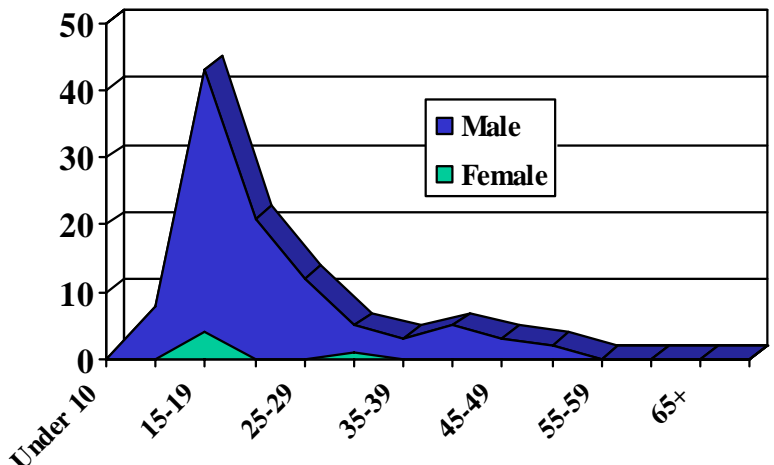
### Burglary by Methods 2005



### Persons Arrested

In 2005, 102 people were arrested for burglary. Of the people arrested 97 were male, and 5 were female. The age group with the largest number of burglary arrestees was the 15-19 year old for male group and for females 20-24 age group.

### Burglary Arrestees by Age and Gender 2005



# Larceny/Theft

## Definition

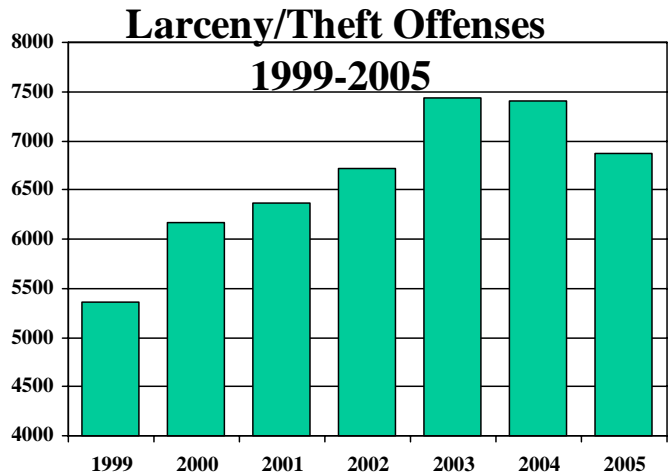
Larceny/Theft, in the Uniform Crime Reporting program, is the unlawful taking, carrying, leading, or riding away of property from the possession or constructive possession of another. Larceny/Theft includes crimes such as shoplifting, pocket-picking, purse snatching, thefts from motor vehicles, theft of motor vehicle parts and accessories, bicycle thefts, and other things of value in which no use of force, violence or fraud occurs.

In the UCR program, this crime classification does not include embezzlement, “con” games, forgery and the passing of worthless checks. Motor vehicle theft is not included in this category as it is a separate index crime offense.

## Analysis

### **Volume**

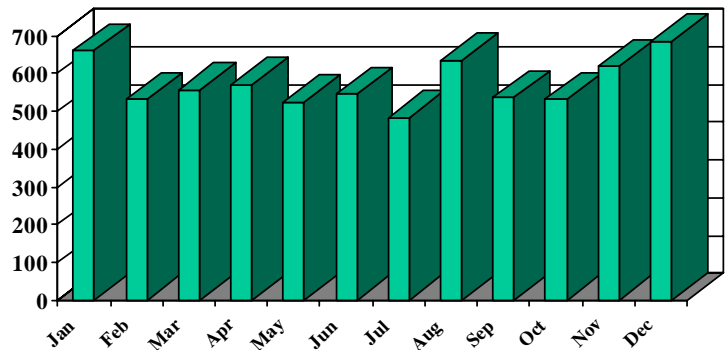
The number of thefts committed in McAllen in 2005 was 6877, making this the largest crime category of the Index Crimes. The volume of theft decreased 6.6 percent when compared to 2004. More thefts were committed in December than any other month. The fewest thefts occurred in July. It is reasonable to expect that many offenses in this category, particularly where the value of goods stolen is small, are never reported to police agencies.



### **Rate**

The 2005 theft rate for McAllen was 5570.37 thefts per 100,000 persons. The change in theft rate from 2004 was an decrease of 8.8 percent.

### Theft by Month 2005



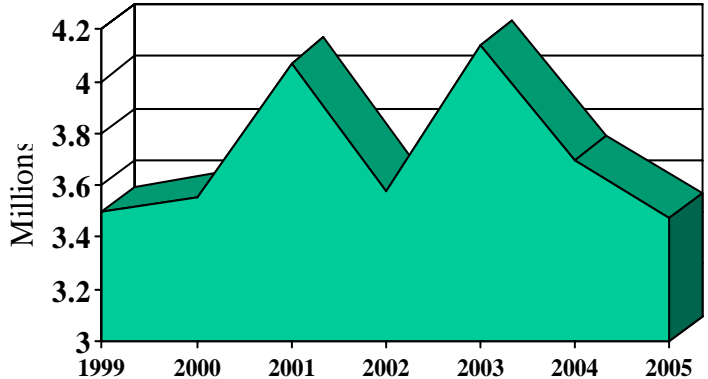
**Nature**

In 2005, theft victims suffered losses totaling \$3,473,530. The average dollar loss per theft was \$505.10.

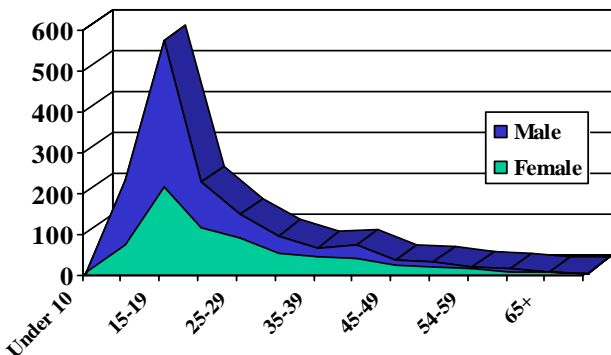
For data collection, larceny-theft is divided into nine categories: pocket-picking, purse-snatching, shoplifting, thefts from motor vehicles, theft of motor vehicle parts, theft of bicycles, theft from buildings, theft from coin-operated machines, and all other thefts (except motor vehicles.) Of the nine theft categories, the highest average theft was the theft from Other's category which yielded an average of \$847.11 per reported occurrence. Buildings thefts averaged \$776.45 per report, theft of auto parts averaged \$301.71 per report. The average per report for pick-pocketing was \$246.15, while purse-snatching was \$184.10. Shoplifting had an average of \$107.34. The lowest average per report was from coin operated machines at \$59.86.

Value of Property Stolen in Theft			
Type of Theft	Offenses	Property Value	Average Loss
Pick Pocket	20	\$4,923	\$246.15
Purse Snatching	22	\$4,050	\$184.10
Shoplifting	1605	\$172,280	\$107.34
From Autos	1413	\$830,528	\$587.78
Auto Parts	1254	\$378,340	\$301.71
Bicycles	76	\$8,932	\$92.51
From Buildings	107	\$135,200	\$776.45
From Coin-Operated Machines	29	\$15,835	\$59.86
Other	2351	\$2,065,400	\$847.11
Total	6877	\$3,473,530	\$505.10

Value Lost to Larceny/Theft 1999-2005



Larceny/Theft Arrestees by Age and Gender



**Persons Arrested**

McAllen Law Enforcement officers made 1463 theft arrests during 2005. Of the subjects arrested for theft during 2005, 664 were female and 799 were male. The age group with the largest number of theft arrestees was the 15-19 year old group with a total of 570 subjects arrested.

# Motor Vehicle Theft

## Definition

Motor Vehicle Theft, for UCR purposes, is the theft or attempted theft of a motor vehicle. A motor vehicle is defined as a self-propelled vehicle that travels on the surface but not on rails. Specifically excluded from this category are motor boats, construction equipment, airplanes, and farming equipment.

## Analysis

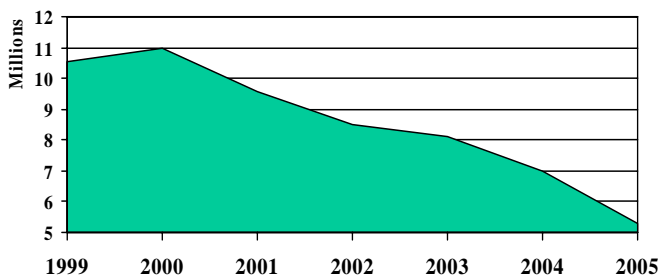
### Volume

The number of motor vehicle thefts committed in McAllen in 2005 was 576. The volume of motor vehicle theft decreased 11 percent when compared to 2004. More motor vehicle thefts were committed in May than any other month, while the fewest occurred in October.

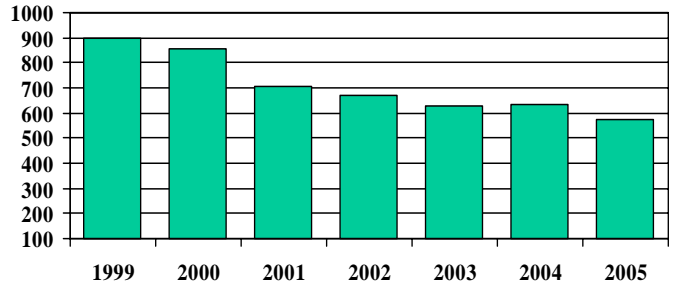
### Rate

The motor vehicle theft rate for McAllen in 2005 was 466.56 thefts per 100,000 persons. The change in motor vehicle theft decreased 13.4 percent when compared to 2004.

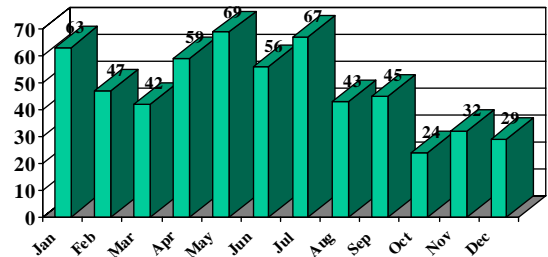
## Motor Vehicle Value at Time of Theft 1999-2005



## Motor Vehicle Theft 1999-2005



## Motor Vehicle Theft by Month 2005



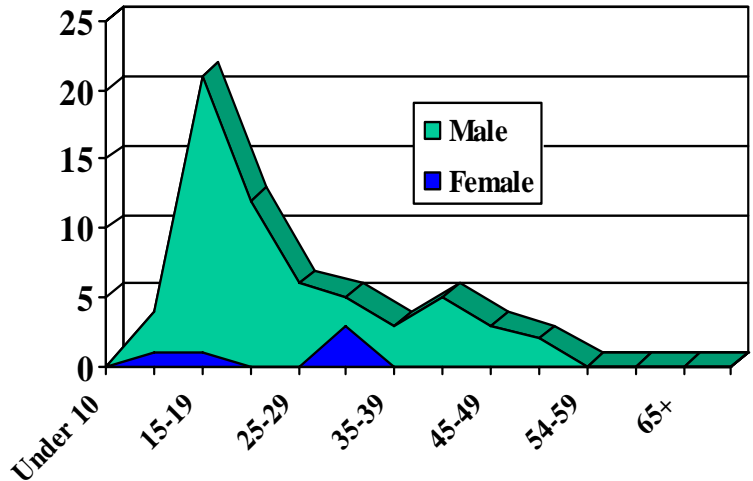
## Nature

In 2005, motor vehicle theft victims suffered losses totaling \$5,313,001. The average dollar loss per vehicle was \$9,223.96. Of the types of motor vehicles reported to be stolen, 71 percent were autos, 26 percent were trucks/buses, and the remainder are classed as 'other vehicles.' The 'other vehicle' classification includes all other motor vehicles included in the UCR definition, such as snowmobiles, motorcycles, motor scooters, trail bikes, mopeds, golf carts, and the like.

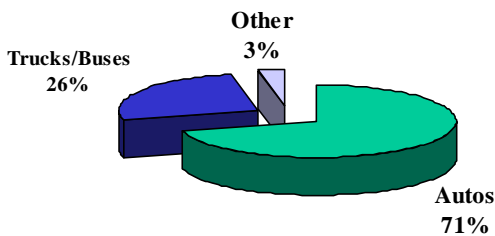
## Persons Arrested

In 2005, McAllen Law Enforcement Officers arrested 61 people for motor vehicle theft. Of the motor vehicle theft arrestees, 56 were male, and 5 were female. The age group with the largest number of arrestees were the 15-19 year old age group.

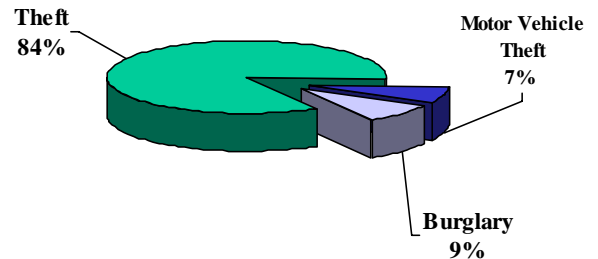
## MVT Arrestees by Age and Gender



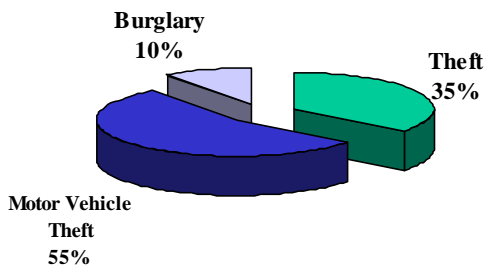
## Motor Vehicle Theft by Type Stolen



## MVT as a Percentage of Property Crime by Volume 2005



## MVT as a Percentage of Property Crime by Value 2005





# Selected Non-Index Crimes

# Selected Non-Index Crimes

## DWI Arrests

### Definition

For UCR purposes, Driving While Under the Influence (DWI) is the driving or operating any motor vehicle or common carrier while under the influence of liquor or narcotics.

### Analysis

#### **Volume**

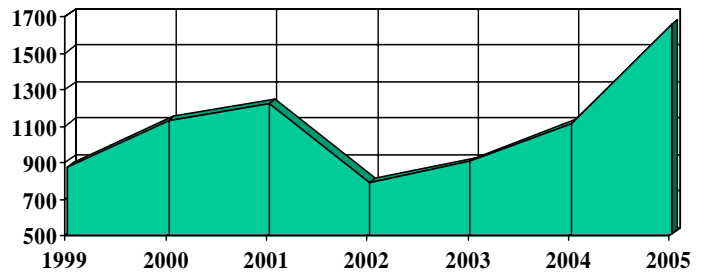
As with Part II non-index crimes, information on the number of reported crimes is not collected by the UCR program for this offense. However, the number of person arrested for this crime is collected.

The number of arrests for DWI in McAllen in 2005 was 1649. The volume of arrests increased 47 percent in comparison to 2004.

#### **Rate**

The 2005 DWI arrest rate was 1335.69 per 100,000 persons. When compared to 2004, this was a increase of 43 percent.

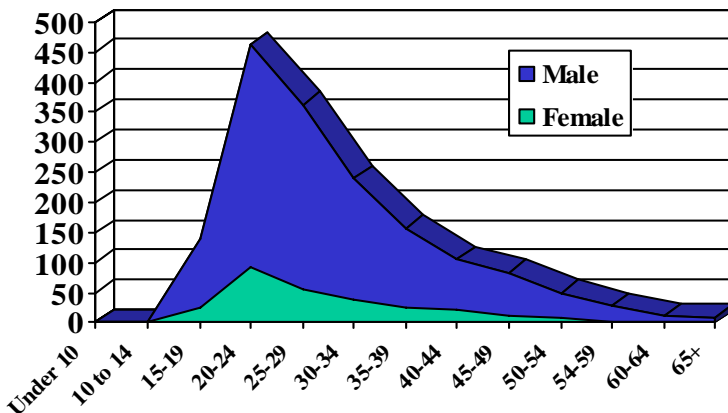
DWI Arrests 1999-2005



### Nature

Any consideration of the number and rate of DWI arrests must be reconciled with the fact that many factors control the ability of law enforcement officers to detect drunken drivers. Among the significant factors which drive the DWI arrest rate are these: media coverage of the DWI problem, public awareness, availability of funds for patrol officer overtime, and the skill and training in DWI detection of officers.

### DWI Arrestees by Age and Gender



### Persons Arrested

Of the 1649 persons arrested for DWI in 2005, 282 were female and 1347 were male. The age group with the highest number of DWI arrestees was the 20-24 year old group.

# Drug Abuse Arrests

## Definition

For UCR purposes, drug abuse encompasses all violations of the narcotic drug laws. These are offenses such as unlawful possession, sale, use, growing and manufacturing of narcotic drugs.

In this report, these violations are summarized to include all drug abuse arrests (grand total drug abuse), sale and manufacturing arrests, and drug possession arrests.

As with all Part II non-index crimes, information on the number of reported crimes is not collected for the UCR program. However, the number of persons arrested for these crimes is collected.

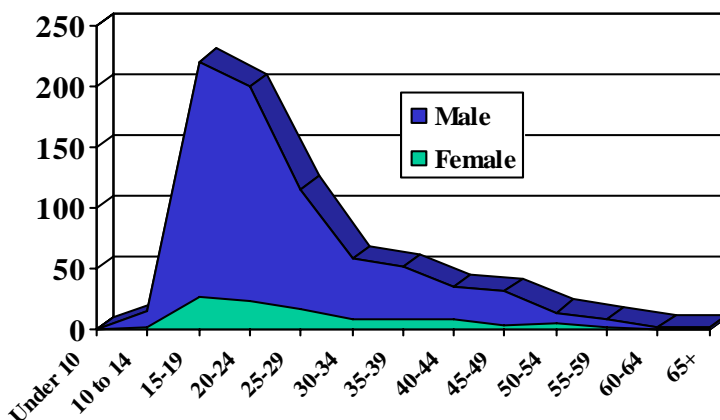
## Arrests

The reported number of arrests for possession of drugs in McAllen in 2005 was 752. Of the arrestees 105 were female and 647 were male. The age group with the largest number of persons arrested for drug possession violations was the 15-19 year old group. The largest number of possession arrests came from marijuana at 70 percent, followed by cocaine at 30 percent, and the remaining percentage was compromised of synthetic or other drug types.

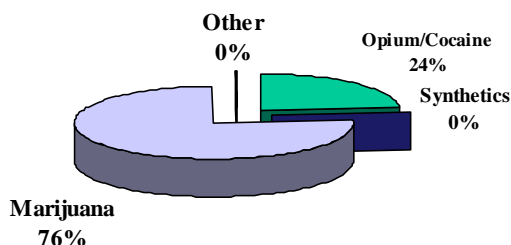
For 2005 sixty-five arrests were made for the sale and/or manufacturing of narcotics. Of those sixty-five arrests, involved marijuana and cocaine.

The age group with the highest number of drug arrests was the 15-19 year old group.

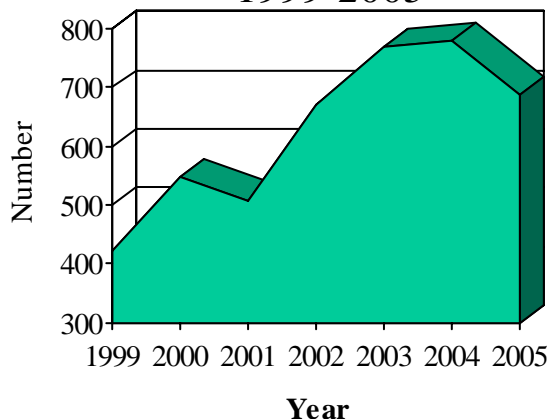
Drug Abuse Arrestees  
by Age and Gender 2005



Drug Possession Arrests by Drug Type 2005



Drug Possession Arrests  
1999-2005



# Drug Seizures

## Purpose

Drug seizure information is presented in compliance with Article 4476-15 5.14 VACS and its requirement that “All law enforcement agencies in this state shall file monthly with the (DPS) Director a report of all arrests for drug offenses made and quantities of controlled substances seized by them during the preceding month.”

Type and Quantity of Drugs Seized		
Class	Type	Quantity
Cannabinoids	Marijuana	20,378.5 pounds
Opiates	Heroin	91.3 Kilograms
Cocaine	Cocaine	70.1 Kilograms
	Crack	13.1 grams
Hallucinogens	Designer Drugs	157.6 grams
Other Drugs	Barbiturates	0 grams
	Amphetamines	0 grams
	Meth-amphetamines	0 grams

## Quantities

The above chart displays the quantity of illegal drugs seized by the Special Investigations Unit. Amounts are rounded. Dose units refer to one pill, tablet, capsule or other single user quantity. The Special Investigations Unit is a unit of the McAllen Police Department that conducts drug enforcement in McAllen as well as other duties.

# Weapons Arrests

## Definition

Weapons: Carrying, possessing includes all violations and attempted violations of regulations or statutes controlling the carrying, using, possessing, furnishing, and manufacturing of deadly weapons or silencers. As with all Part II non-index crimes, the UCR program collects only reports of arrests for this offense.

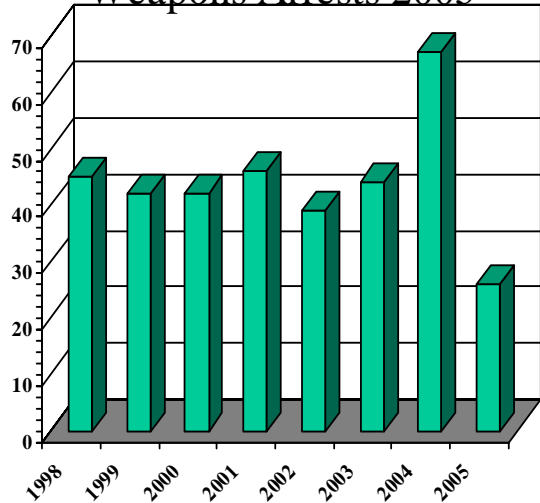
## Analysis

As indicated earlier, Firearms were the murder weapon of choice in 38 percent of McAllen murders.

## **Volume and Rate**

In 2005, 26 arrests for weapon violations were reported. The number of arrests decreased 61 percent from 2004. The 2005 weapons arrest rate was 21.06 arrests per 100,000 persons.

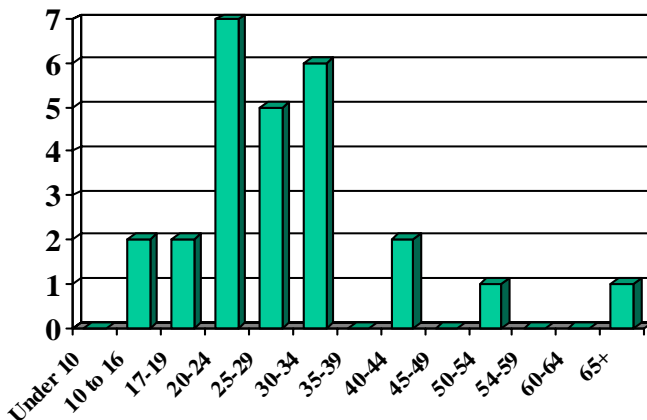
**Weapons Arrests 2005**



## Persons Arrested

Twenty-six males were arrested for weapons charges. The largest age group of arrestees for weapon violations was the 20-24 year old group.

**Weapons Arrestees by Age**





# Calls for Service

# McAllen Calls for Service Clock 2005



During 2005, the department responded to 147,724 calls for service. This represents an decrease of 7 percent when compared to 2004.

One  
**CALL FOR SERVICE**  
Every 3.56 minutes

One  
**TRAFFIC STOP**  
Every 12.61 minutes

One  
**CRIMES AGAINST  
PROPERTY**  
Every 39.85 minutes

One  
**SUSPICIOUS PERSON  
/ CIRCUMSTANCE**  
Every 38.22 minutes

One  
**ASSISTANCE TO THE  
PUBLIC**  
Every 25.03 minutes

One  
**DISTURBANCE**  
Every 50.92 minutes

One  
**ALARM CALLS**  
Every 28.30 minutes

One  
**TRAFFIC ACCIDENT**  
Every 54.88 minutes

One  
**TRAFFIC FLOW  
PROBLEM**  
Every 1.1 hours

One  
**FALSE/UNKNOWN  
911 CALL**  
Every 2.78 hours

One  
**CRIME AGAINST A  
PERSON**  
Every 2.13 hours

One  
**BURGLARY**  
Every 8.38 hours

One  
**AUTO THEFT**  
Every 7.40 hours

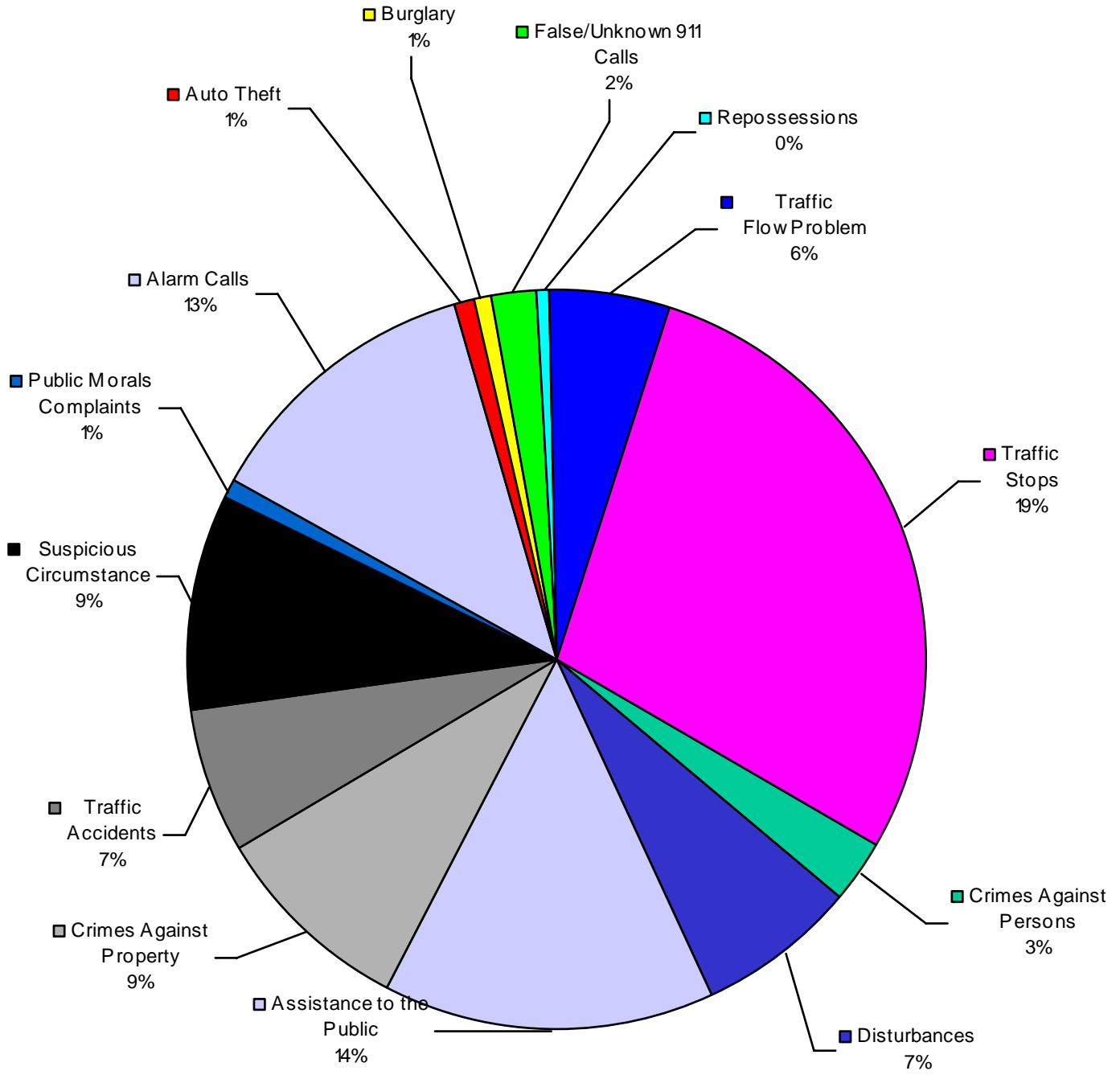
One  
**PUBLIC MORALS  
COMPLAINT**  
Every 6.94 hours

One  
**REPOSSESSION**  
Every 16.46 hours

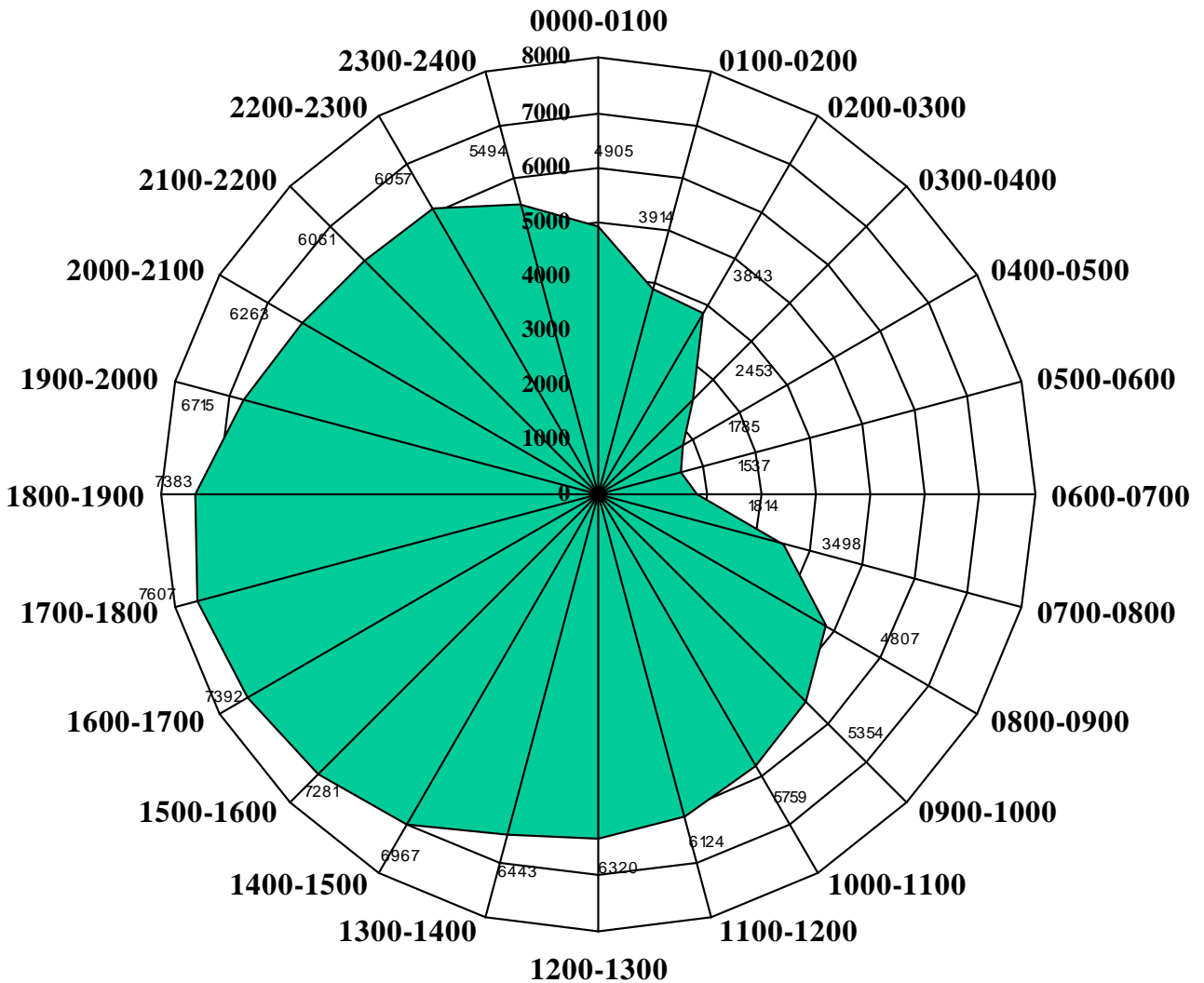
This mode of display represents the annual ratio of calls for service to fixed time intervals.

This is an aggregate representation of data, it is designed to convey the annual service call experience by showing the relative frequency of occurrence.

# Calls for Service 2005



# Total Calls for Service by Hour 2005





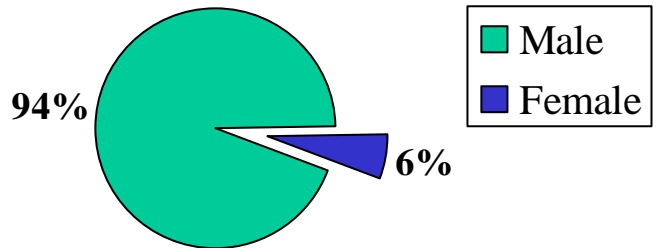
# Law Enforcement Personnel

# Law Enforcement Personnel 2005

## Commissioned Personnel

The McAllen Police Department employs 265 full-time sworn officers. The average number of officers per 1000 citizens of McAllen is 2.13. Of the 265 officers, 94 percent are male and 6 percent are female. The City of McAllen is currently authorized 265 sworn officers, and is at 99 percent of full strength.

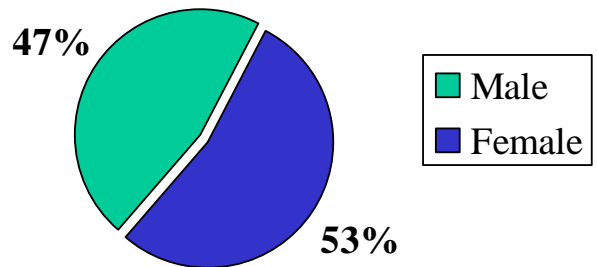
Percentage of Male and Female Sworn Officers



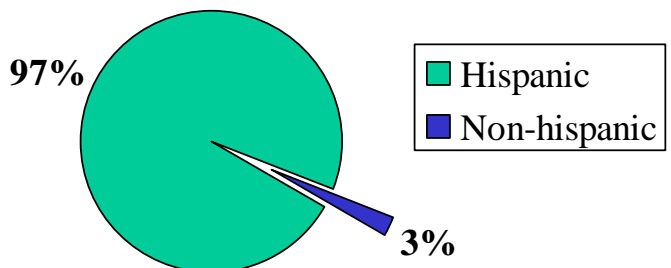
## Civilian Personnel

The McAllen Police Department employs 136 civilian employees, which include Community Service Specialist, Emergency Communications Specialists, Custodians, Records Clerks, Administrative Assistants, Secretaries, Crime Statisticians, Animal Wardens, and Fleet Maintenance Personnel. 132 of the civilian employees are non-exempt, and 4 are exempt employees. Of the civilian employees 47 percent are male and 53 percent are female. The Police Department is authorized 136 civilian employees.

Percentage of Male and Female Civilian Employees



Employee Ethnicity





# McAllen Arrest Data

2005

# Summary of Arrest Data 2005

CLASSIFICATION OF OFFENSES	JUVENILE	15.82%	ADULT	84.18%	TOTAL	
MURDER & NON-NEGLIGENT MANSLAUGHTER	0	0.00%	4	0.06%	4	0.05%
MANSLAUGHTER BY NEGLIGENCE	0	0.00%	0	0.00%	0	0.00%
FORCIBLE RAPE	1	0.08%	5	0.08%	6	0.08%
ROBBERY	7	0.58%	54	0.84%	61	0.80%
AGGRAVATED ASSAULT	16	1.32%	80	1.24%	96	1.26%
BURGLARY - BREAKING OR ENTERING	28	2.32%	74	1.15%	102	1.34%
LARCENY - THEFT (EXCEPT MOTOR VEHICLE)	488	40.40%	975	15.17%	1463	19.17%
MOTOR VEHICLE THEFT	19	1.57%	42	0.65%	61	0.80%
OTHER ASSAULTS	78	6.46%	389	6.05%	467	6.12%
ARSON	0	0.00%	1	0.02%	1	0.01%
FORGERY & COUNTERFEITING	6	0.50%	22	0.34%	28	0.37%
FRAUD	2	0.17%	18	0.28%	20	0.26%
EMBEZZLEMENT	0	0.00%	1	0.02%	1	0.01%
STOLEN PROPERTY; BUYING, RECEIVING, POSSESSING	0	0.00%	0	0.00%	0	0.00%
VANDALISM	0	0.00%	0	0.00%	0	0.00%
WEAPONS; CARRYING, POSSESSING, ETC.	2	0.17%	24	0.37%	26	0.34%
PROSTITUTION AND COMMERCIALIZED VICE	0	0.00%	46	0.72%	46	0.60%
SEX OFFENSES (EXCEPT FORCED RAPE & PROSTITUTION)	3	0.25%	11	0.17%	14	0.18%
<b>DRUG ABUSE VIOLATIONS GRAND TOTAL</b>	<b>72</b>	<b>5.96%</b>	<b>680</b>	<b>10.58%</b>	<b>752</b>	<b>9.85%</b>
<b>(1) SALE/MANUFACTURING SUBTOTAL</b>	<b>0</b>	<b>0.00%</b>	<b>65</b>	<b>1.01%</b>	<b>65</b>	<b>0.85%</b>
OPIUM, COCAINE AND THEIR DERIVATIVES	0	0.00%	62	0.96%	62	0.81%
MARIJUANA	0	0.00%	2	0.03%	2	0.03%
SYNTHETIC/MANUFACTURED DRUGS	0	0.00%	0	0.00%	0	0.00%
OTHER DANGEROUS NON-NARCOTIC DRUGS	0	0.00%	1	0.02%	1	0.01%
<b>(2) POSSESSION SUBTOTAL</b>	<b>72</b>	<b>5.96%</b>	<b>615</b>	<b>9.57%</b>	<b>687</b>	<b>9.00%</b>
OPIUM, COCAINE AND THEIR DERIVATIVES	9	0.75%	153	2.38%	162	2.12%
MARIJUANA	63	5.22%	461	7.17%	524	6.86%
SYNTHETIC/MANUFACTURED DRUGS	0	0.00%	0	0.00%	0	0.00%
OTHER DANGEROUS NON-NARCOTIC DRUGS	0	0.00%	1	0.02%	1	0.01%
GAMBLING TOTAL	0	0.00%	0	0.00%	0	0.00%
BOOKMAKING (HORSE AND SPORT BOOK)	0	0.00%	0	0.00%	0	0.00%
NUMBERS AND LOTTERY	0	0.00%	0	0.00%	0	0.00%
ALL OTHER GAMBLING	0	0.00%	0	0.00%	0	0.00%
OFFENSES AGAINST FAMILY AND CHILDREN	0	0.00%	21	0.33%	21	0.28%
DRIVING UNDER THE INFLUENCE	4	0.33%	1645	25.60%	1649	21.60%
LIQUOR LAWS	5	0.41%	67	1.04%	72	0.94%
DRUNKNESS	31	2.57%	1583	24.63%	1614	21.14%
DISORDERLY CONDUCT	45	3.73%	68	1.06%	113	1.48%
VAGRANCY	0	0.00%	0	0.00%	0	0.00%
ALL OTHER OFFENSES (EXCEPT TRAFFIC)	128	10.60%	617	9.60%	745	9.76%
CURFEW AND LOITERING LAW VIOLATIONS	0	0.00%	0	0.00%	0	0.00%
RUN-AWAYS	273	22.60%	0	0.00%	273	3.58%
<b>TOTAL ARRESTS</b>	<b>1208</b>	<b>100%</b>	<b>6427</b>	<b>100%</b>	<b>7635</b>	<b>100%</b>
LARCENY - THEFT/Burglary		42.72%				
RUN-AWAYS		22.60%				
DRUG ABUSE VIOLATIONS GRAND TOTAL		5.96%				
LIQUOR LAWS				51.27%		
LARCENY - THEFT/Burglary				16.32%		
DRUG ABUSE VIOLATIONS GRAND TOTAL				10.58%		
TOTAL		71.27%		78.17%		

## Male Juvenile Arrests 2005

<b>CLASSIFICATION OF OFFENSES</b>	<b>&lt; 10</b>	<b>10-12</b>	<b>13-14</b>	<b>15</b>	<b>16</b>	<b>TOTAL</b>
MURDER & NONNEGLIGENT MANSLAUGHTER						0
MANSLAUGHTER BY NEGLIGENCE						0
FORCIBLE RAPE			1			1
ROBBERY			3	1	3	7
AGGRAVATED ASSAULT		1	5	2	4	12
BURGLARY-BREAKING OR ENTERING			8	8	8	24
LARCENY-THEFT (EXCEPT MOTOR VEHICLE)		41	106	79	90	316
MOTOR VEHICLE THEFT			3	4	10	17
OTHER ASSAULTS		5	8	15	14	42
ARSON						0
FORGERY & COUNTERFEITING				2		2
FRAUD						0
EMBEZZLEMENT						0
STOLEN PROPERTY; BUYING, RECEIVING, POSSESSING						0
VANDALISM						0
WEAPONS; CARRYING, POSSESSING, ETC.			1	1		2
PROSTITUTION AND COMMERCIALIZED VICE						0
SEX OFFENSES (EXCEPT FORCED RAPE & PROSTITUTION)		1	2			3
DRUG ABUSE VIOLATIONS GRAND TOTAL		2	11	20	33	66
(1) SALE/MANUFACTURING SUBTOTAL						0
OPIUM, COCAINE AND THEIR DERIVATIVES						0
MARIJUANA						0
SYNTHETIC/MANUFACTURED DRUGS						0
OTHER DANGEROUS NON-NARCOTIC DRUGS						0
(2) POSSESSION SUBTOTAL		2	11	20	33	66
OPIUM, COCAINE AND THEIR			1	1	6	8
MARIJUANA		2	10	19	27	58
SYNTHETIC/MANUFACTURED DRUGS						0
OTHER DANGEROUS NON-NARCOTIC DRUGS						0
GAMBLING TOTAL						0
BOOKMAKING (HORSE AND SPORT BOOK)						0
NUMBERS AND LOTTERY						0
ALL OTHER GAMBLING						0
OFFENSES AGAINST FAMILY AND CHILDREN						0
DRIVING UNDER THE INFLUENCE				2	2	4
LIQUOR LAWS			1	2	1	4
DRUNKNESS			3	9	12	24
DISORDERLY CONDUCT		1	9	17	11	38
VAGRANCY						0
ALL OTHER OFFENSES (EXCEPT TRAFFIC)		7	56	22	26	111
CURFEW AND LOITERING						0
RUN-AWAYS		29	39	36	14	118
<b>TOTAL</b>	<b>0</b>	<b>87</b>	<b>256</b>	<b>220</b>	<b>228</b>	<b>791</b>

## Female Juvenile Arrests 2005

CLASSIFICATION OF OFFENSES	< 10	10-12	13-14	15	16	TOTAL
MURDER & NONNEGLIGENT MANSLAUGHTER						0
MANSLAUGHTER BY NEGLIGENCE						0
FORCIBLE RAPE						0
ROBBERY						0
AGGRAVATED ASSAULT			2	1	1	4
BURGLARY-BREAKING OR ENTERING				1	3	4
LARCENY-THEFT (EXCEPT MOTOR VEHICLE)	1	24	47	52	48	172
MOTOR VEHICLE THEFT			1	1		2
OTHER ASSAULTS		8	12	8	8	36
ARSON						0
FORGERY & COUNTERFEITING				1	3	4
FRAUD				1	1	2
EMBEZZLEMENT						0
STOLEN PROPERTY; BUYING, RECEIVING, POSSESSING						0
VANDALISM						0
WEAPONS; CARRYING, POSSESSING, ETC.						0
PROSTITUTION AND COMMERCIALIZED VICE						0
SEX OFFENSES (EXCEPT FORCED RAPE & PROSTITUTION)						0
DRUG ABUSE VIOLATIONS GRAND TOTAL			2	1	3	6
(1) SALE/MANUFACTURING SUBTOTAL						0
OPIUM, COCAINE AND THEIR DERIVATIVES						0
MARIJUANA						0
SYNTHETIC/MANUFACTURED DRUGS						0
OTHER DANGEROUS NON-NARCOTIC DRUGS						0
(2) POSSESSION SUBTOTAL			2	1	3	6
OPIUM, COCAINE AND THEIR			1			1
MARIJUANA			1	1	3	5
SYNTHETIC/MANUFACTURED DRUGS						0
OTHER DANGEROUS NON-NARCOTIC DRUGS						0
GAMBLING TOTAL						0
BOOKMAKING (HORSE AND SPORT BOOK)						0
NUMBERS AND LOTTERY						0
ALL OTHER GAMBLING						0
OFFENSES AGAINST FAMILY AND CHILDREN						0
DRIVING UNDER THE INFLUENCE						0
LIQUOR LAWS					1	1
DRUNKNESS			1	5	1	7
DISORDERLY CONDUCT		1	5		1	7
VAGRANCY						0
ALL OTHER OFFENSES (EXCEPT TRAFFIC)		1	5	6	5	17
CURFEW AND LOITERING						0
RUN-AWAYS		9	51	40	55	155
<b>TOTAL</b>	<b>1</b>	<b>43</b>	<b>126</b>	<b>117</b>	<b>130</b>	<b>417</b>

## Male Adult Arrests 2005

CLASSIFICATION OF OFFENSES	17	18	19	20	21	22	23	24	25-29	TOTAL
MURDER & NONNEGLIGENT MANSLAUGHTER						1	1		1	3
MANSLAUGHTER BY NEGLIGENCE										0
FORCIBLE RAPE				1			1			2
ROBBERY	5	5		4	3	3		2	6	28
AGGRAVATED ASSAULT	1	2	3	3		5	2	9	11	36
BURGLARY - BREAKING OR ENTERING	10	7	6	8	6	4	2	1	12	56
LARCENY - THEFT (EXCEPT MOTOR VEHICLE)	76	77	36	17	27	28	23	16	56	356
MOTOR VEHICLE THEFT	1	1	4	4	4		2	2	6	24
OTHER ASSAULTS	12	8	7	14	14	9	17	12	55	148
ARSON					1					1
FORGERY & COUNTERFEITING			1						4	5
FRAUD	1		2			1	1	2	3	10
EMBEZZLEMENT										0
STOLEN PROPERTY; BUYING, RECEIVING, POSSESSING										0
VANDALISM										0
WEAPONS; CARRYING, POSSESSING, ETC.	1	1			2	1	1	3	5	14
PROSTITUTION AND COMMERCIALIZED VICE			1		1	2		1	4	9
SEX OFFENSES (EXCEPT FORCED RAPE & PROSTITUTION)						1	1		1	3
DRUG ABUSE VIOLATIONS GRAND TOTAL	49	45	47	41	44	35	28	29	99	417
(1) SALE/MANUFACTURING SUBTOTAL		2			2	1	1	1	16	23
OPIUM, COCAINE AND THEIR		2			1	1	1		15	20
MARIJUANA					1			1		2
SYNTHETIC/MANUFACTURED DRUGS										0
OTHER DANGEROUS NON-NARCOTIC DRUGS									1	1
(2) POSSESSION SUBTOTAL	49	43	47	41	42	34	27	28	83	394
OPIUM, COCAINE AND THEIR DERIVATIVES	4	5	5	6	7	8	4	8	15	62
MARIJUANA	45	38	42	35	35	26	23	20	67	331
SYNTHETIC/MANUFACTURED DRUGS										0
OTHER DANGEROUS NON-NARCOTIC DRUGS									1	1
GAMBLING TOTAL										0
BOOKMAKING (HORSE AND SPORT BOOK)										0
NUMBERS AND LOTTERY										0
ALL OTHER GAMBLING										0
OFFENSES AGAINST FAMILY AND CHILDREN	1						2	1	2	6
DRIVING UNDER THE INFLUENCE	27	35	47	74	63	76	82	73	306	783
LIQUOR LAWS	7	8	4	10	4	2	3	2	7	47
DRUNKNESS	32	47	40	45	54	43	51	53	260	625
DISORDERLY CONDUCT	7	2		2	4	4	1	1	7	28
VAGRANCY										0
ALL OTHER OFFENSES (EXCEPT TRAFFIC)	26	50	26	22	18	18	26	25	94	305
<b>TOTAL</b>	<b>256</b>	<b>288</b>	<b>224</b>	<b>245</b>	<b>245</b>	<b>233</b>	<b>244</b>	<b>232</b>	<b>939</b>	<b>2906</b>

## Male Adult Arrests 2005 cont.

CLASSIFICATION OF OFFENSES	30-34	35-39	40-44	45-49	50-54	55-59	60-64	65+	TOTAL
MURDER & NONNEGLIGENT MANSLAUGHTER				1					1
MANSLAUGHTER BY NEGLIGENCE									0
FORCIBLE RAPE	1		1	1					3
ROBBERY	8	2	3			1	1		15
AGGRAVATED ASSAULT	8	10	5	4		2	3	2	34
BURGLARY - BREAKING OR ENTERING	4	3	5	3	2				17
LARCENY - THEFT (EXCEPT MOTOR VEHICLE)	43	22	34	12	9	2	5		127
MOTOR VEHICLE THEFT	2	3	5	3	2				15
OTHER ASSAULTS	51	34	27	24	13	7	3	5	164
ARSON									0
FORGERY & COUNTERFEITING	1	1	1	1					4
FRAUD	1				1				2
EMBEZZLEMENT									0
STOLEN PROPERTY; BUYING, RECEIVING, POSSESSING									0
VANDALISM									0
WEAPONS; CARRYING, POSSESSING, ETC.	6		1		1			1	9
PROSTITUTION AND COMMERCIALIZED VICE	3	4	1	1		2	1		12
SEX OFFENSES (EXCEPT FORCED RAPE & PROSTITUTION)		2	2	1	1		1		7
DRUG ABUSE VIOLATIONS GRAND TOTAL	50	43	26	27	9	7	1	1	164
(1) SALE/MANUFACTURING SUBTOTAL	11	4	6	5	3	1			30
OPIUM, COCAINE AND THEIR	11	4	6	5	3	1			30
MARIJUANA									0
SYNTHETIC/MANUFACTURED DRUGS									0
OTHER DANGEROUS NON-NARCOTIC DRUGS									0
(2) POSSESSION SUBTOTAL	39	39	20	22	6	6	1	1	134
OPIUM, COCAINE AND THEIR DERIVATIVES	15	15	8	10	3	6			57
MARIJUANA	24	24	12	12	3		1	1	77
SYNTHETIC/MANUFACTURED DRUGS									0
OTHER DANGEROUS NON-NARCOTIC DRUGS									0
GAMBLING TOTAL									0
BOOKMAKING (HORSE AND SPORT BOOK)									0
NUMBERS AND LOTTERY									0
ALL OTHER GAMBLING									0
OFFENSES AGAINST FAMILY AND CHILDREN	4	2	1	3		1			11
DRIVING UNDER THE INFLUENCE	200	133	85	73	40	24	11	10	576
LIQUOR LAWS	3	4	1	3		1	1		13
DRUNKNESS	170	129	156	135	57	37	55	18	757
DISORDERLY CONDUCT	9	7	1	5		1	1		24
VAGRANCY									0
ALL OTHER OFFENSES (EXCEPT TRAFFIC)	62	49	41	28	7	8	10	1	206
<b>TOTAL</b>	<b>626</b>	<b>448</b>	<b>396</b>	<b>325</b>	<b>142</b>	<b>93</b>	<b>93</b>	<b>38</b>	<b>2161</b>

## Female Adult Arrests 2005

CLASSIFICATION OF OFFENSES	17	18	19	20	21	22	23	24	25-29	TOTAL
MURDER & NONNEGLIGENT MANSLAUGHTER										0
MANSLAUGHTER BY NEGLIGENCE										0
FORCIBLE RAPE										0
ROBBERY	1		1	3			1	1	1	8
AGGRAVATED ASSAULT				3		1			3	7
BURGLARY-BREAKING OR ENTERING										0
LARCENY-THEFT (EXCEPT MOTOR VEHICLE)	52	43	17	34	26	16	23	12	88	311
MOTOR VEHICLE THEFT										0
OTHER ASSAULTS	4	4	3	3	8	3	4	3	11	43
ARSON										0
FORGERY & COUNTERFEITING	1	3	2	1					1	8
FRAUD				2	1				2	5
EMBEZZLEMENT							1			1
STOLEN PROPERTY; BUYING, RECEIVING, POSSESSING										0
VANDALISM										0
WEAPONS; CARRYING, POSSESSING, ETC.										0
PROSTITUTION AND COMMERCIALIZED VICE	1	1	1	2	2				3	10
SEX OFFENSES (EXCEPT FORCED RAPE & PROSTITUTION							1			1
DRUG ABUSE VIOLATIONS GRAND TOTAL	4	7	12	8	5	3	3	4	17	63
(1) SALE/MANUFACTURING SUBTOTAL								1		1
OPIUM, COCAINE AND THEIR								1		1
MARIJUANA										0
SYNTHETIC/MANUFACTURED DRUGS										0
OTHER DANGEROUS NON-NARCOTIC DRUGS										0
(2) POSSESSION SUBTOTAL	4	7	12	8	5	3	3	3	17	62
OPIUM, COCAINE AND THEIR DERIVATIVES		1	5	2	1	2	2	1	6	20
MARIJUANA	4	6	7	6	4	1	1	2	11	42
SYNTHETIC/MANUFACTURED DRUGS										0
OTHER DANGEROUS NON-NARCOTIC DRUGS										0
GAMBLING TOTAL										0
BOOKMAKING (HORSE AND SPORT BOOK)										0
NUMBERS AND LOTTERY										0
ALL OTHER GAMBLING										0
OFFENSES AGAINST FAMILY AND CHILDREN					1	2		1		4
DRIVING UNDER THE INFLUENCE	3	5	18	14	21	12	24	22	57	176
LIQUOR LAWS	2	2		1		1			1	7
DRUNKNESS	5	10	10	6	17	14	9	6	33	110
DISORDERLY CONDUCT	1		1				1		4	7
VAGRANCY										0
ALL OTHER OFFENSES (EXCEPT TRAFFIC)	6	1	5	2	8	3	5	2	21	53
<b>TOTAL</b>	<b>80</b>	<b>76</b>	<b>70</b>	<b>79</b>	<b>89</b>	<b>55</b>	<b>72</b>	<b>51</b>	<b>242</b>	<b>814</b>

## Female Adult Arrests 2005 cont.

CLASSIFICATION OF OFFENSES	30-34	35-39	40-44	45-49	50-54	55-59	60-64	65+	TOTAL
MURDER & NONNEGLIGENT MANSLAUGHTER									0
MANSLAUGHTER BY NEGLIGENCE									0
FORCIBLE RAPE									0
ROBBERY	2				1				3
AGGRAVATED ASSAULT	1	1				1			3
BURGLARY-BREAKING OR ENTERING	1								1
LARCENY-THEFT (EXCEPT MOTOR VEHICLE)	49	40	35	20	17	13	4	3	181
MOTOR VEHICLE THEFT	3								3
OTHER ASSAULTS	17	7	2	1	3	2	1	1	34
ARSON									0
FORGERY & COUNTERFEITING	1		2	2					5
FRAUD	1								1
EMBEZZLEMENT									0
STOLEN PROPERTY; BUYING, RECEIVING, POSSESSING									0
VANDALISM									0
WEAPONS; CARRYING, POSSESSING, ETC.			1						1
PROSTITUTION AND COMMERCIALIZED VICE	1	9	2	3					15
SEX OFFENSES (EXCEPT FORCED RAPE & PROSTITUTION)									0
DRUG ABUSE VIOLATIONS GRAND TOTAL	8	9	9	4	5	1			36
(1) SALE/MANUFACTURING SUBTOTAL	2	1	2	3	3				11
OPIUM, COCAINE AND THEIR	2	1	2	3	3				11
MARIJUANA									0
SYNTHETIC/MANUFACTURED DRUGS									0
OTHER DANGEROUS NON-NARCOTIC DRUGS									0
(2) POSSESSION SUBTOTAL	6	8	7	1	2	1			25
OPIUM, COCAINE AND THEIR DERIVATIVES	3	5	5		1				14
MARIJUANA	3	3	2	1	1	1			11
SYNTHETIC/MANUFACTURED DRUGS									0
OTHER DANGEROUS NON-NARCOTIC DRUGS									0
GAMBLING TOTAL									0
BOOKMAKING (HORSE AND SPORT BOOK)									0
NUMBERS AND LOTTERY									0
ALL OTHER GAMBLING									0
OFFENSES AGAINST FAMILY AND CHILDREN									0
DRIVING UNDER THE INFLUENCE	39	25	21	11	10	3	1		110
LIQUOR LAWS									0
DRUNKNESS	16	24	33	7	7	4			91
DISORDERLY CONDUCT	2	2	3			2			9
VAGRANCY									0
ALL OTHER OFFENSES (EXCEPT TRAFFIC)	18	17	11	2	2	3			53
<b>TOTAL</b>	<b>159</b>	<b>134</b>	<b>119</b>	<b>50</b>	<b>45</b>	<b>29</b>	<b>6</b>	<b>4</b>	<b>546</b>

# APPENDICES

## UNIFORM CRIME REPORTING OFFENSES

Offenses in Uniform Crime Reporting are divided into two groups designated as Part I and Part II offenses. Offense and arrest information is reported for the Part I offenses, while only arrest information is reported for Part II offenses.

### Part I Offenses

**Criminal Homicide** – (a) Murder and non-negligent manslaughter: All willful felonious homicides as distinguished from deaths caused by negligence. Excluded are attempts to kill, assaults, to kill, suicides, accidental deaths and justifiable homicides. Justifiable homicides are limited to: the killing of a person by a law enforcement officer in the line of duty; and the killing of a person in the act of committing a felony by a private citizen; (b) Manslaughter by negligence: any death which the police investigation established was primarily attributable to gross negligence of some individual other than the victim.

**Murder and Non-Negligent Manslaughter** – The willful (non-negligent) killing of one human being by another. This includes any death due to injuries received in a fight, argument, quarrel, assault, or commission of a crime. Suicides, accidental deaths, assaults to murder, traffic fatalities and attempted murders are not included.

**Justifiable Homicide** – The killing of a person by a law enforcement officer in the line of duty; or the killing (during the commission of a felony) of a felon by a private citizen.

**Manslaughter by Negligence** – The killing of another person through gross negligence.

**Forcible Rape** – The carnal knowledge of a female forcibly and against her will.

**Robbery** – The taking or attempting to take anything of value from the care, custody, or control of a person or persons by force or threat of force or violence and/or by putting the victim in fear.

**Aggravated Assault** – An unlawful attack by one person upon another for the purpose of inflicting severe or aggravated bodily injury. This type of assault is usually accompanied by the use of a weapon or by means likely to produce death or great bodily harm.

**Burglary** – The unlawful entry of a structure to commit a felony or theft. This includes breaking and entering with intent to commit a larceny; housebreaking; safe cracking; and all attempts at these offenses.

**Larceny-Theft** – The unlawful taking, carrying, leading, or riding away of property from the possession or constructive possession of another. This includes pocket-picking, purse-snatching, shoplifting, theft from motor vehicles, theft of motor vehicle parts and accessories, theft of bicycles, theft from buildings, theft from coin-operated machines, and all thefts that don't fit into the above mentioned categories.

**Motor Vehicle Theft** – The theft or attempted theft of a motor vehicle, which is defined as a self-propelled vehicle that runs on land surface and not on rails.

# GLOSSARY OF TERMS

**Adult** – In Texas, an adult is a person 17 years of age or over. National law provides that adults are age 18 or over. Unless otherwise indicated, this publication follows the state definition.

**Cleared by Arrest or Exceptional Means** – For Uniform Crime Reporting purposes, an offense is cleared by arrest or solved when at least one person is arrested, charged with the commission of an offense and turned over to court for prosecution. In certain situations, police are not able to follow these three steps and, if the following four conditions can be met, the offense can be cleared exceptionally: (1) the investigation has definitely established the identity of the offender; (2) there is enough information to support an arrest, charge, and turning over to the court for prosecution; (3) the exact location of the offender is known so that he could be taken into custody; (4) there is some reason outside the police control that prevents the arresting, charging, and prosecuting of the offender.

**Crime Index** – The sum of seven index offenses used to measure the extent, fluctuation and distribution of a crime in a given geographical area. Crime classifications used in the Crime Index are: murder, rape, robbery, aggravated assault, burglary, larceny-theft and motor vehicle theft. While arson is also an index offense, it is not part of the Crime Index.

**Crime Rate** – The number of offenses per 100,000 inhabitants. To calculate a crime rate, divide the population by 100,000 and then divide the number of offenses by that answer. The crime rate is useful in determining the relative frequency of crime without regard to fluctuations in population.

**Index Crime** – A crime for which reports of offenses committed are collected. Index crimes are murder, rape, robbery, aggravated assault, burglary, larceny-theft, motor vehicle theft and arson.

**Juvenile** – In Texas, a juvenile is a person 16 years of age or under.

**Non-Violent Crime** – Property crimes; the index offenses of burglary, larceny-theft and motor vehicle theft.

**Personal Weapon** – The use of hands, feet, fists and teeth as a weapon to commit a crime; also termed strong-arm weapon.

**Strong-Arm Weapons** – The use of hands, feet, fists and teeth as a weapon to commit a crime. Also termed personal weapon.

**Threat** – A declared intent to inflict bodily harm on a person.

**Violent Crime** – Consists of the Index Offenses of murder, forcible rape, robbery and aggravated assault. Also referred to as crimes against persons.