



**City of McAllen Crime Report**

# **McAllen Police Department**



# **Crime In McAllen 2014**

# Crime in McAllen 2014



## **McAllen Police Department**

**Victor Rodriguez**  
**Chief of Police**

**Lt. Joel A. Morales Jr.**  
**Director**  
**Crime Records Bureau**

**Irma L. Caro**  
**Crime Statistician**

# Acknowledgements

*This report was compiled from data submitted to the Crime Records Office by members of the McAllen Police Department and from data generated from calls for service. This report is modeled after the Texas Department of Public Safety Annual Crime in Texas report.*



# TABLE OF CONTENTS

---

Executive Summary from Chief of Police	7
Introduction of Uniform Crime Reporting	8
<b>I. Chapter One: City of McAllen Crime Analysis</b>	<b>9</b>
Crime In McAllen Table	10
Crime Trends and Analysis	11
UCR Crime Index	12
Annual Crime Trends Volume & Rate	13
McAllen Index Crime Clock	14
McAllen Crime Facts at a Glance	15
<b>II. Chapter Two: Index Crime Analysis</b>	<b>16</b>
<b>Criminal Homicide-Murder</b>	<b>17</b>
Volume & Rate	18
Analysis by Month & Day of the Week	19
Location of Crime & Time of Day	19
Victims, Age, Gender, Ethnicity	20
Offenders, Age, Gender, Ethnicity	21
Relationship/Circumstance /Type of Weapon Used	22
<b>Forcible Rape “New Definition”</b>	<b>23</b>
Volume & Rate	24
Victims, Age, Gender, Ethnicity	25
Offenders, Age, Gender, Ethnicity	26
Location of Crime/Relations to Victim/Offender	27
<b>Robbery</b>	<b>28</b>
Volume & Rate	29
Robbery Analysis	30
Property Losses	30
Property Losses by Monetary Value	30
Losses by Location	30
Persons Arrested	31
Weapons Used	31



# TABLE OF CONTENTS

---

<b>Aggravated Assault</b>	<b>32</b>
Volume & Rate	33
Analysis	34
Weapon Used	34
Persons Arrested by Age Group	34
 <b>Burglary-Analysis</b>	 <b>35</b>
Volume & Rate	36
Analysis	37
Property Losses	37
By Location	37
Method of Entry	37
Persons Arrested	37
 <b>Larceny-Theft</b>	 <b>38</b>
Volume & Rate	39
Analysis	40
Monthly Property Loss Values	40
Property Stolen by Classification	40
Value of Stolen Property by Classification	40
Persons Arrested by Age	41
 <b>Motor Vehicle Theft</b>	 <b>42</b>
Volume & Rate	43
Analysis	44
Type of Vehicle Stolen	44
Persons Arrested by Age	44
Loss by Index Crime	44



# TABLE OF CONTENTS

---

<b>III. Chapter Three: Selected Non-Index Crimes</b>	<b>45</b>
<b>Categories</b>	<b>46</b>
<b>D.U.I Arrests</b>	<b>47</b>
Monthly Arrestees	47
Persons Arrested by Age	47
<b>Drug Abuse Arrests</b>	<b>48</b>
Monthly Arrestees	48
Drug Type	48
Persons Arrested by Age & Gender	48
<b>Drug Seizure</b>	<b>49</b>
Drug Type & Quantity	49
<b>Weapons Arrests</b>	<b>50</b>
Monthly	50
Persons Arrested by Age Group	50
<b>IV. Chapter Four: Family Violence</b>	<b>51</b>
Analysis	52
Victim Category, Relationship	53
Family Violence Data	53
Type of Injury, Type of Offense, Type of Weapon	54
<b>V. Chapter Five: Calls for Service</b>	<b>55</b>
Calls for Service by Description	56
Calls for Service by Hour	57
<b>VI. Chapter Six: Law Enforcement Personnel</b>	<b>58</b>
Commissioned Personnel/Civilian Personnel	59
Employee Ethnicity	59
<b>VII. Chapter Seven: McAllen Arrest Data</b>	<b>60</b>
<b>Appendices</b>	<b>64</b>
<b>Glossary of Terms</b>	<b>65</b>



# EXECUTIVE SUMMARY

---

The 2014 Annual Crime in McAllen offers a comprehensive analysis of crimes reported by the McAllen Police Department to the Federal Bureau of Investigations Uniform Crime Reporting (UCR) Program.

Crime in McAllen provides an overview of Uniform Crime Reporting (UCR) by the McAllen Police Department. This report examines offenses and total volume of UCR offenses that occurred in 2014.

The McAllen Police Department continues to use statistical resources by collecting, analyzing crime trends, carefully planning strategic operations, and administrative operational functions of the Department, that are used for preventing and suppressing criminal activities.

In addition, effective strategies helped our department pinpoint crime issues, which enabled us to address problems and to direct resources where needed the most.

In closing I express my thanks to all the members of our community and members of the McAllen Police Department for their continued commitment and dedication to our community by continuing to display the principles of community oriented policing, as well as high visibility, strict enforcement of the law, and professionalism.

Sincerely,

Victor Rodriguez  
Chief of Police

# INTRODUCTION

---

The City of McAllen Police Department participates in the Uniform Crime Reporting (UCR) Program. Uniform Crime Reporting is part of a nationwide, cooperative statistical effort administered by the Federal Bureau of Investigation.

## History of UCR

In the 1920s, the International Association of Chiefs of Police (IACP) recognized the potential value in tracking national crime statistics. The Committee on Uniform Crime Records of the IACP developed and initiated this voluntary national data collection effort in 1930. Also, in 1930 the IACP was instrumental in gaining congressional approval which authorized the FBI to serve as the national clearinghouse for statistical information on crime. In June 1966, the National Sheriffs' Association (NSA) established a Committee on Uniform Crime Reporting to serve in an advisory capacity and to encourage sheriffs throughout the country to fully participate in the Program. Since 1930, through the UCR Program, the FBI has collected and compiled data to use in law enforcement administration, operation, management, and to indicate fluctuations in the level of crime in America.

To best depict total crime and to provide the most meaningful data to police administrators, the UCR Program collects data on known offenses and persons arrested by law enforcement agencies. The UCR Program does not record the findings of a court, coroner, jury, or the decision of a prosecutor.

UCR collects reports of seven index crimes. The crimes in this group are all serious, either by their nature or because of the frequency with which they occur. These seven index crimes are:

- ❖ Murder
- ❖ Forcible rape
- ❖ Robbery
- ❖ Aggravated Assaults
- ❖ Burglary
- ❖ Larceny (theft)
- ❖ Motor Vehicle Theft



# Chapter One

## City of McAllen Crime Analysis

# CRIME IN McALLEN

Table:1										
Year	Pop	Index	Murder	Rape	Robbery	Aggravated Assault	Burglary	Larceny/Theft	Motor Vehicle Theft	Total
2011	132,741	Volume	4	27	72	143	511	5184	179	6120
		Rate	2.91	19.68	52.47	104.21	372.38	3777.76	130.44	4280.59
2012	135,667	Volume	1	3	56	106	503	4751	211	5631
		Rate	0.7	2.2	41.3	78.1	370.8	3502	155.5	4150.6
2013	138,659	Volume	2	6	83	80	536	4652	236	5595
		Rate	1.4	4.3	59.9	57.7	386.6	3355	170.2	4035.1
2014	141,716	Volume	6	18	68	90	411	4364	172	5129
		Rate	4.2	12.7	48.0	63.5	290.0	3079.4	121.4	3619.2

## Summary Index Crimes 2014

*The above chart lists the Crime Volume and Crime Rate for the City of McAllen. The “rate” reflects the number of crimes reported per 100,000 residents.*

# CRIME TRENDS & ANALYSIS

- ❑ *Crime trends are analyzed using two methods, Crime Volume and Crime Rates.*
- ❑ *Crimes are also categorized according to: Violent Crimes and Property Crimes.*

## CRIME VOLUME:

Volume is the collective sum of the seven index crimes. By comparing the volume of index crimes from year to year, trends can be evaluated.

## CRIME RATES:

Crime rates on the other hand, are compiled to compensate for the changes in population and to show the number of people affected by crime in a given population. Crime rates are usually expressed in the number of crimes per 100,000 residents.

## VIOLENT CRIMES:

Involve the element of personal confrontation between the perpetrator and the victim. This category is comprised of Homicide, Forcible Rape, Robbery, and Aggravated Assault.

## PROPERTY CRIMES:

Involve only the taking of money or property. This category is comprised of Burglary, Theft, and Motor Vehicle Theft.

McAllen Crime Volume –Table: 2				
Violent Crimes	Offense	2014	2013	% Change
	Murder	6	2	200.0%
	Rape	18	6	200.0%
	Robbery	68	83	-18.1%
	Aggravated Assault	90	80	12.5%
	Violent Crime Total	182	171	6.4%
Property Crimes	Burglary	411	536	-23.3%
	Theft	4364	4652	-6.2%
	Motor Vehicle Theft	172	236	-27.1%
	Property Crime Total	4947	5424	-8.8%
	Index Crime Total	5129	5595	-8.3%

McAllen Crime Rate- Table: 3				
Violent Crimes	Offense	2014	2013	% Change
	Murder	4.2	1.4	193.5%
	Rape	12.7	4.3	193.5%
	Robbery	48.0	59.9	-19.8%
	Aggravated Assault	63.5	57.7	10.1%
	Violent Crime Total	128.4	123.3	4.1%
Property Crimes	Burglary	290.0	386.6	-25.0%
	Theft	3079.4	3355.0	-8.2%
	Motor Vehicle Theft	121.4	170.2	-28.7%
	Property Crime Total	3490.8	3911.8	-10.8%
	Index Crime Total	3619.2	4035.1	-10.3%

- ◆ During the calendar year 2014, there were a total 5129 index offenses in the City of McAllen. The index decreased 8.3 percent when compared to 2013.
- ◆ During the calendar year 2014, McAllen's crime rate was 3619.2 crimes per 100,000 persons. The crime rate decreased 10.3 percent.

# CRIME IN McALLEN

## UCR INDEX CRIMES 2014

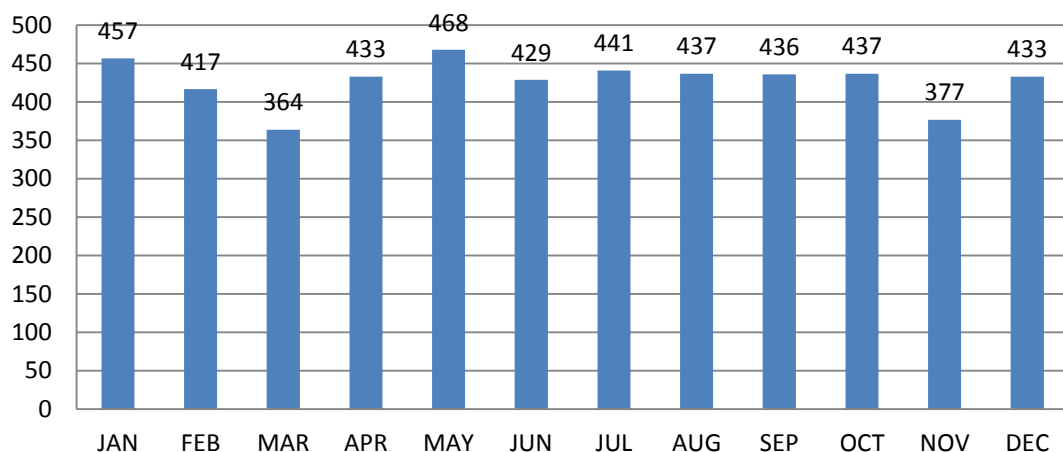
### INDEX CRIME VOLUME

- ❖ The average monthly crime volume is 427.
- ❖ This represents a decrease of 8.3% when compared to 2013.
- ❖ The month recording the highest number of offenses was May: 468.
- ❖ The month recording the lowest reported number of offenses was March: 364.
- ❖ Murder experienced an increase of 200% when compared to 2013.
- ❖ Reductions were recorded in four (4) of the seven (7) index crimes during 2014.

### INDEX CRIME RATE

- ❖ The average monthly crime rate is 301.6.
- ❖ This represents a decrease of 10.3% when compared to 2013.
- ❖ Rape experienced an increase of 193.5% when compared to 2013.
- ❖ Motor Vehicle Theft experienced a decrease of 28.7% when compared to 2013.
- ❖ Robbery experienced a decrease of 19.8% when compared to 2013.
- ❖ Theft experienced a decrease of 8.2% when compared to 2013.
- ❖ Property Crimes experienced a decrease of 10.8% when compared to 2013.

Index Crime by Month  
Crime in McAllen 2014

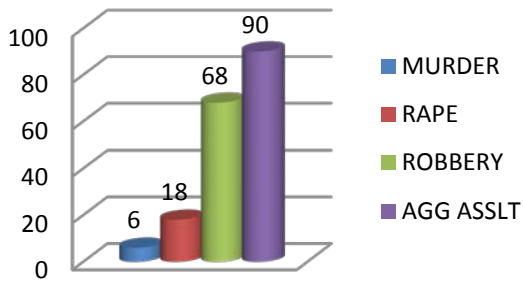


# ANNUAL CRIME TRENDS

## VIOLENT CRIMES

Violent Crimes involve the element of personal confrontation between the perpetrator and the victim. Because of their nature, violent crimes are considered to be more serious than property crimes. An estimated 182 violent crimes occurred during 2014. This represents an increase of 6.4% when compared to 2013.

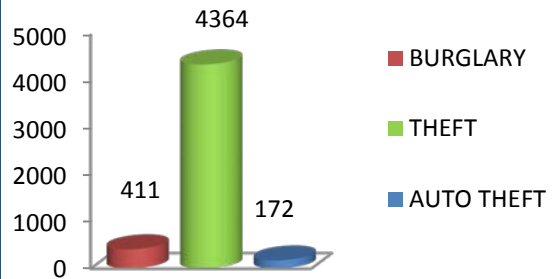
**Violent Crime by Offense  
Crime In McAllen 2014  
Figure:1**



## PROPERTY CRIMES

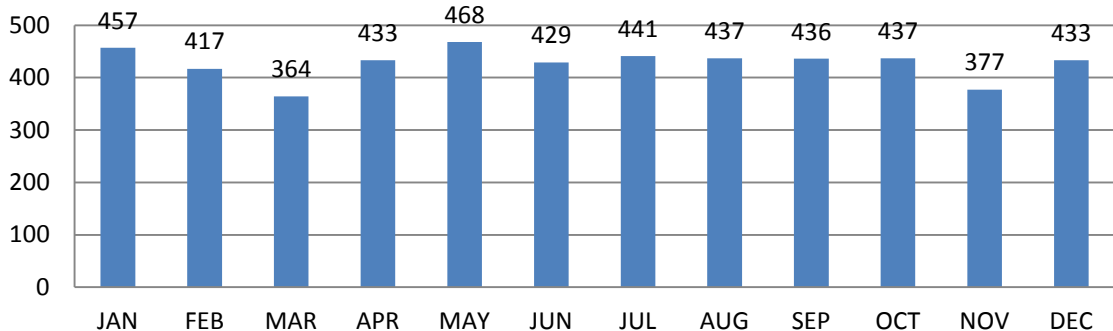
The number of property crimes occurring during 2014 was estimated at 4947. Property crimes decreased by 8.8 percent. Theft accounted for 88 percent and motor vehicle theft accounted for 3.4 percent. The property crime rate was 3490.8 for 2014.

**Property Crimes by Offense  
Crime In McAllen 2014  
Figure:2**

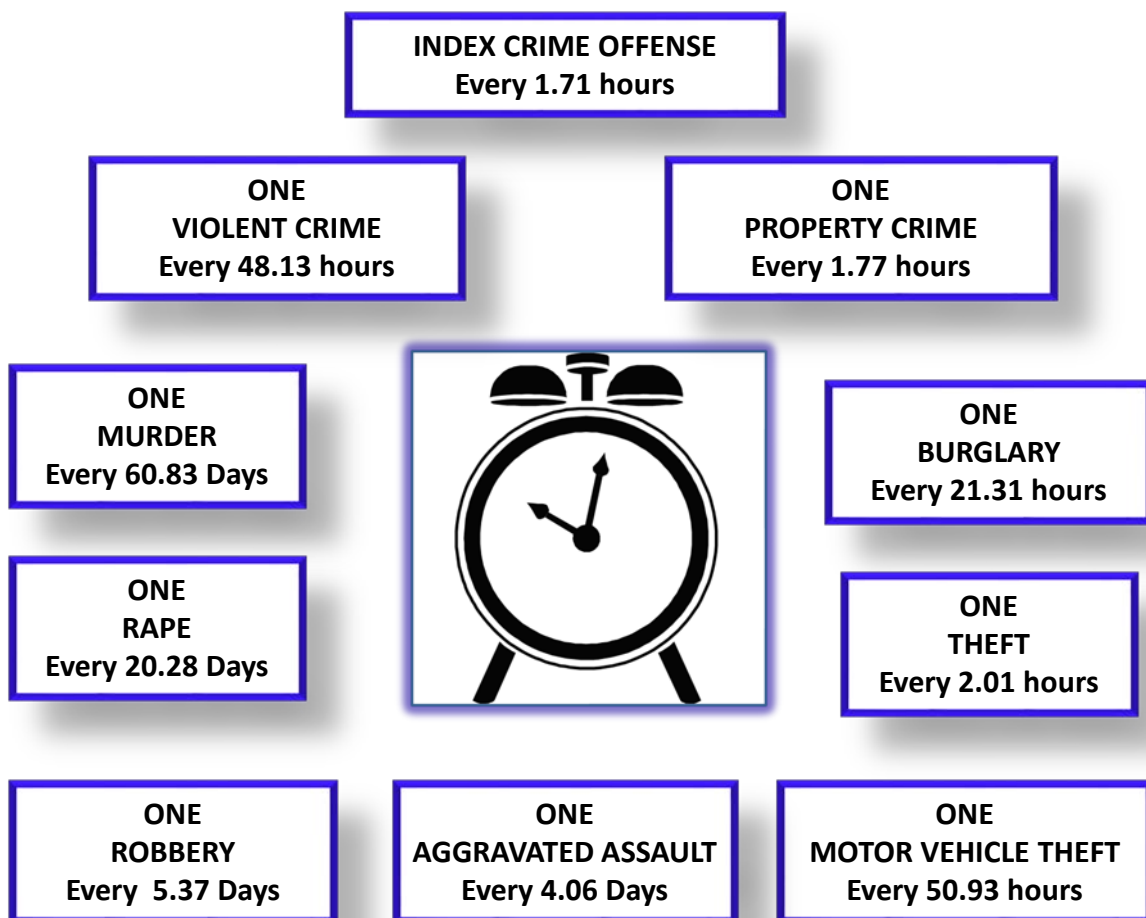


Monthly Part 1 crime variations show that in general crime occurrences peaked in the month of May with a total of 468 crimes reported. The month with the lowest reported crime during 2014 was March with 364 crimes reported. (See figure: 3)

**Monthly Index Totals  
Crime in McAllen 2014  
Figure:3**



# McAllen Index Crime Clock 2014



This mode of display represents the annual ratio of crime to fixed time intervals.

This is an aggregate representation of UCR data, it is designed to convey the annual reported crime experience by showing the relative frequency of occurrence of the Index Offenses.

# **McAllen**

## **Crime Facts at a Glance**

### **2014**

- There were an estimated 5129 index offenses.
- The Crime Rate for the City of McAllen was 3619.2 index offenses per 100,000 residents.
- During 2014, McAllen Police made 5,762 arrests. Of those arrested, 672 were 17 years of age or younger.
- There was an estimated 90 Aggravated assaults. Of these, 26 percent were committed with the use of firearms.
- Residential burglaries accounted for 40% of all burglaries reported.
- The reported dollar loss due to motor vehicle theft: \$2,121,189.
- The reported dollar loss due to larceny/theft : \$4,007,194.74.

# Chapter Two

## Index Crime Analysis



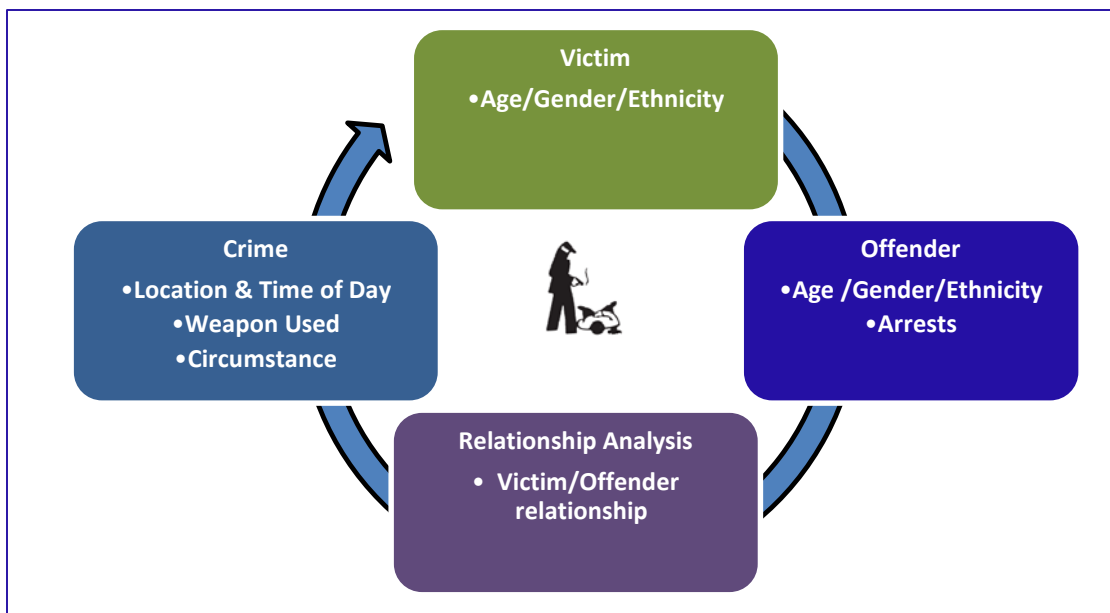
# CRIMINAL HOMICIDE

## MURDER /NON-NEGLIGENT MANSLAUGHTER

---

### DEFINITION

Murder and non-negligent manslaughter, as defined in the UCR program, is the willful killing of one human being by another. This offense category includes any death resulting from a fight, argument, quarrel, assault or commission of a crime. Attempted murder and assaults with the intent to kill are not counted as murder, but are included in UCR as aggravated assaults. Suicides, accidental deaths, and justifiable homicides are also excluded from the murder classification.



The McAllen Police Department participates in UCR providing additional information so that an in-depth analysis of murder is possible. Through Supplement Homicide Reporting System, information is provided that identifies the age, sex, race, and ethnic origin of both victim and offender; the murder weapon; and the circumstance of the offense.

## VOLUME

There were 6 murders reported during 2014.

The murders occurred in the month of January, February, April, June and July .  
( See figure: 4)

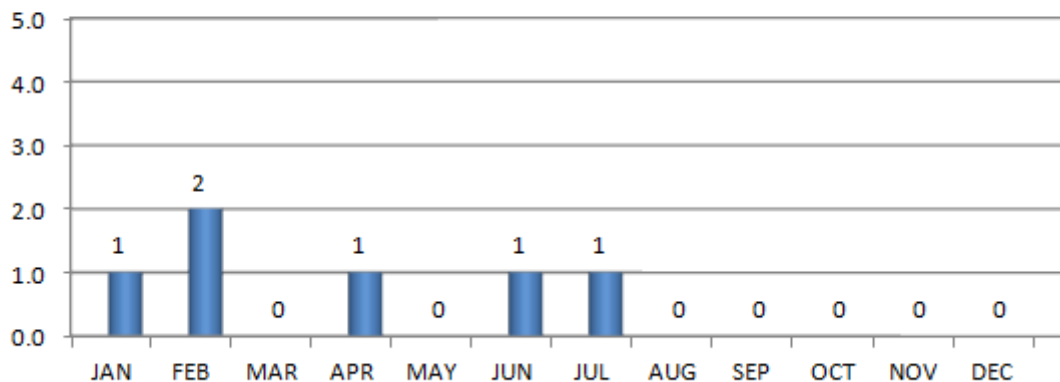
During 2014 the murder volume was approximately 200% more when compared to 2013.

## RATE

The murder rate for McAllen in 2014 was 4.2 per 100,000 residents.

This represents an increase of 193.5% when compared to 2013.

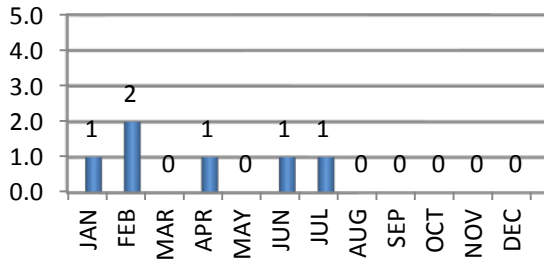
**Murder: Monthly Index Totals**  
**Crime In McAllen 2014**  
**Figure:4**



## OFFENSES BY MONTH

During 2014, the months of January, April, June and July recorded one murder. (See figure:5)

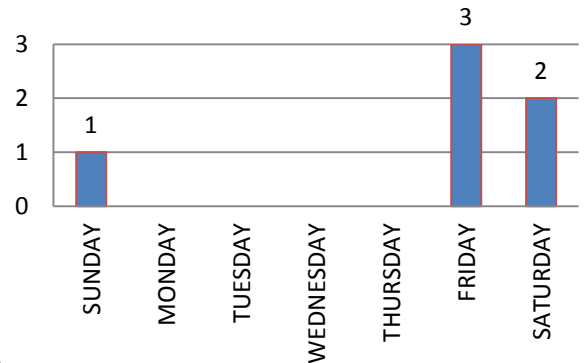
**Murder: By Month**  
Crime In McAllen 2014  
Figure:5



## OFFENSES BY DAY OF WEEK

During 2014, murders occurred on Sunday, Friday (3), and Saturday (2). (See figure:6)

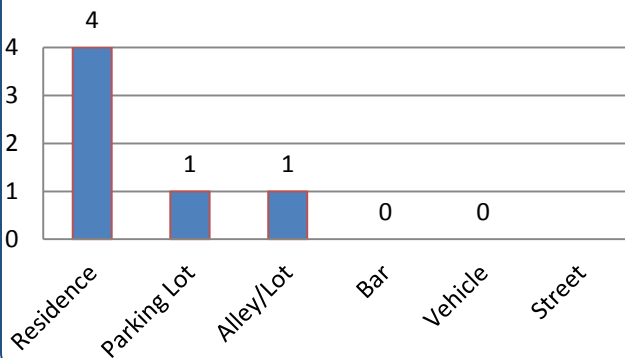
**Murder: Day of the Week**  
Crime In McAllen 2014  
Figure:6



## LOCATIONS

Murders occurred at a residence, parking lot and alley/lot. (See figure:7)

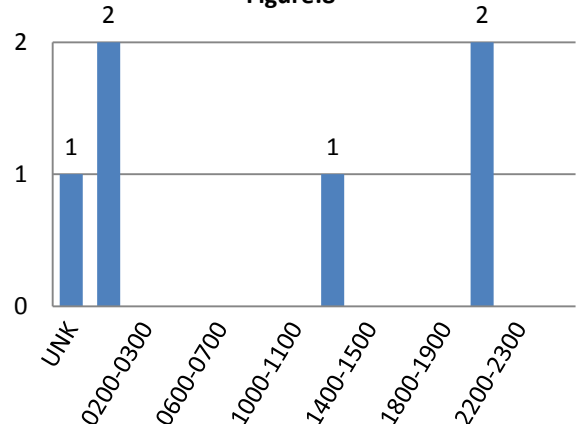
**Murder: Location**  
Crime In McAllen 2014  
Figure:7



## TIME SCALE

Murder hours were from unknown to 22:00-23:00 hours. (See figure:8)

**Murder: Time Scale**  
Crime In McAllen 2014  
Figure:8



## MURDER VICTIMS

In 2014 murder victims age range was 20-24 to 40-44 years of age.

### VICTIM'S ETHNICITY

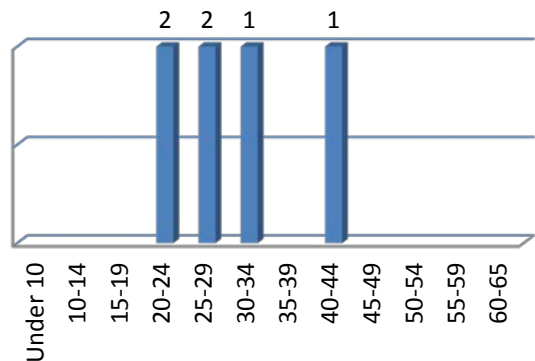
Victim ethnicity was 83% Hispanic and 17% Non-Hispanic. (See figure:10)

### VICTIM'S GENDER

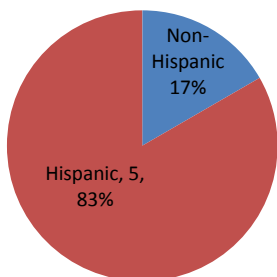
Victim gender was 83% male and 17% female.  
(See figure: 11)

**Murder: Victims by Age Category  
Crime In McAllen 2014**

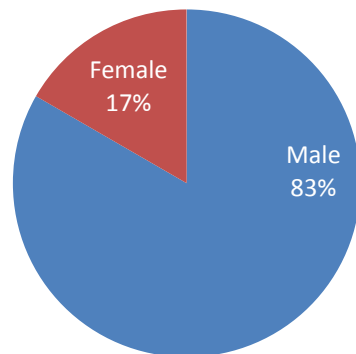
**Figure: 9**



**Murder: Victims by Ethnicity  
Crime in McAllen 2014**  
**Figure: 10**



**Murder: Victims by Gender  
Crime in McAllen 2014**  
**Figure: 11**



## OFFENDERS

For Uniform Crime Reporting purposes, an offense is cleared only when a law enforcement agency has identified the offender, enough evidence exists to press charges, and the subject is actually taken into custody.

The arrest of one person can clear several crimes or several persons may be arrested in the process of clearing one offense. Law enforcement agencies may also clear a crime by exceptional means when some element beyond law enforcement control precludes the placing of formal charges against the offender.

### OFFENDER AGE

Offender age range was 25-29 and 40-44. (See figure: 12)

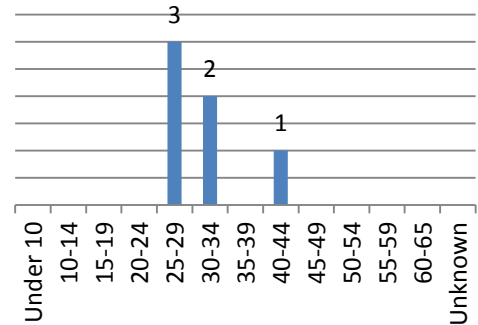
### OFFENDER GENDER

Offender gender was 100% male. (See figure:13).

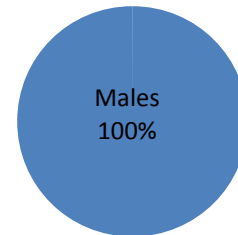
### OFFENDER ETHNICITY

Offender ethnicity was 100% Hispanic. (See figure: 14).

**Murder: Offenders by Age Category**  
**Crime in McAllen 2014**  
**Figure: 12**



**Murder: Offenders by Gender**  
**Crime in McAllen 2014**  
**Figure: 13**



**Murder: Offenders by Ethnicity**  
**Crime in McAllen 2014**  
**Figure: 14**



## RELATIONSHIP

Victim-Offender relationship was unknown or acquaintance to the offender.

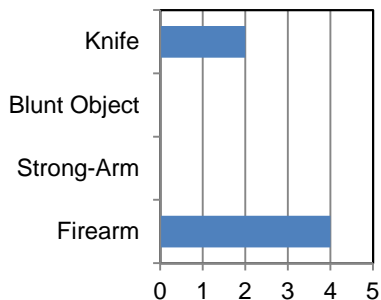
## CIRCUMSTANCES

The data shows that circumstances were unknown, argument and drug related. (See figure: 15).

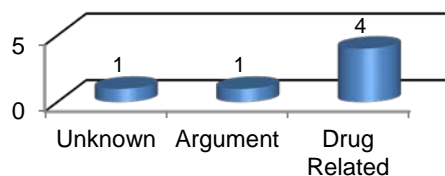
## WEAPON

The most used weapons in the commission of murder were: Firearm and Knife. (See figure: 16).

**Murder: Type of Weapon  
Crime In McAllen 2014  
Figure: 16**



**Murder: Circumstance  
Crime In McAllen 2014  
Figure: 15**



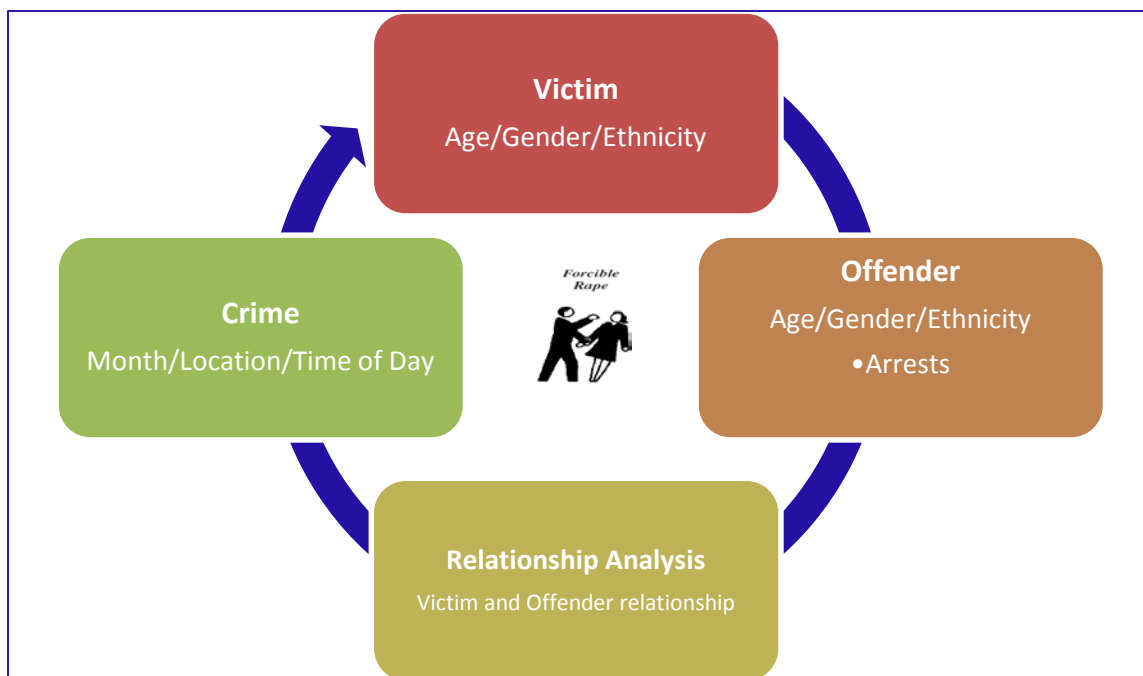
# FORCIBLE RAPE

---

## DEFINITION

Rape, as defined in the Uniform Crime Reporting Program, is “Penetration, no matter how slight, of the vagina or anus with any part of the body or object, or oral penetration by sex organ of another person, without the consent of the victim”.

This definition includes either gender of victim or offender. Sexual penetration means the penetration, no matter how slight, of the vagina and anus with any body part or object, or oral penetration by a sex organ of another person, or by a related sex object. This definition also includes instances in which the victim is incapable of giving consent. Attempts to commit Rape (2b) are also scored under the new definition.



## VOLUME

There were 18 rapes reported during 2014.

This represents a 200% increase when compared to 2013.

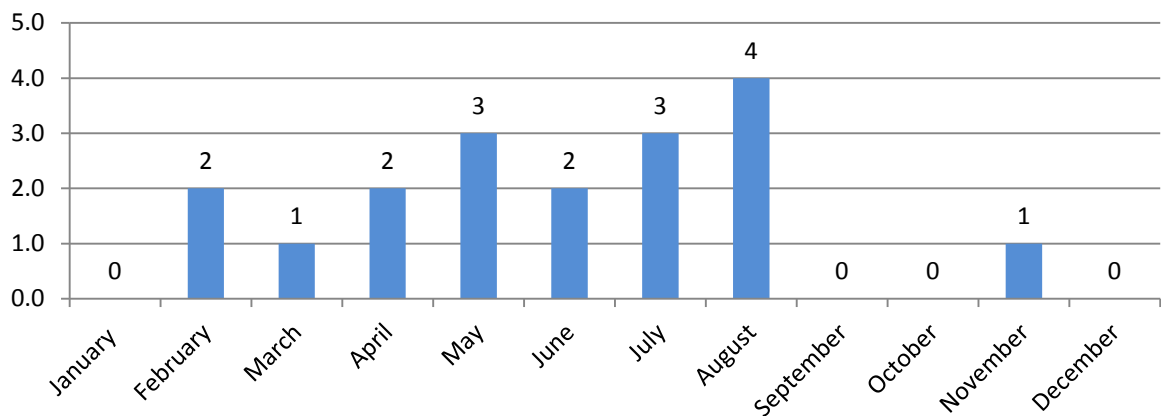
Rapes occurred in February, March, April, May, June, July, August and November.  
(Please see figure:17)

## RATE

The rape rate for McAllen was 12.7 rapes per 100,000 residents.

This represents a 193.5 % increase when compared to 2013.

**Summary of Index Crime: Forcible Rape  
Crime In McAllen 2014  
Figure:17**





## VICTIMOLOGY

Forcible Rape differs from other violent crimes because, in many cases, the victims are hesitant to report the offense to the police. The rigors of court procedures, embarrassment, and fear of any accompanying stigma exert a deterrent effect upon the victim's willingness to contact the police. As attitudes towards the reporting of rape change, trends in the number of reported offenses can be expected to change accordingly.

Data compiled during 2014 shows that there were 18 victims.

### VICTIMS BY AGE GROUP

Of the age groups reporting an offense, the age group reporting the highest incidence: 10-14.

Of the age groups reporting an offense, the age group reporting the lowest incidence: 15-19.  
(See figure:18)

### VICTIMS BY AGE TYPE

Adult: 5.

Juvenile: 13.

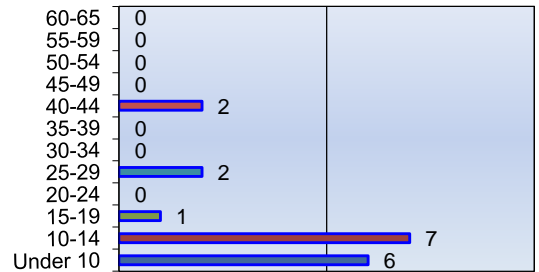
(See figure: 19)

### VICTIMS BY ETHNICITY

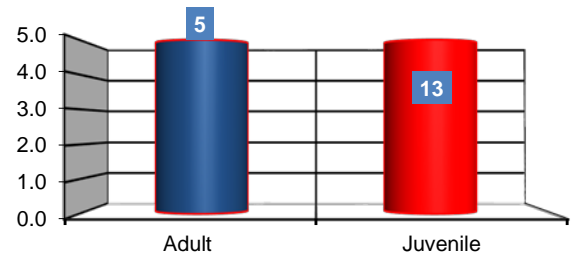
Victim Ethnicity: 100% Hispanic.

(See figure:20)

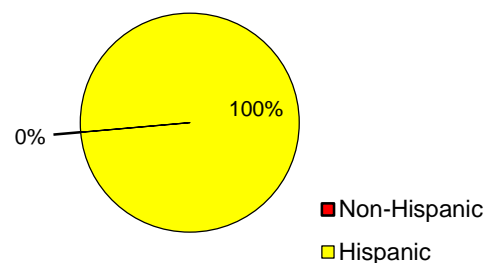
**Forcible Rape: Victims by Age Group  
Crime In McAllen 2014  
Figure: 18**



**Forcible Rape: Victims by Age Type  
Crime In McAllen 2014  
Figure: 19**



**Forcible Rape: Victims by Ethnicity  
Crime In McAllen 2014  
Figure: 20**



# OFFENDERS

## PERSONS ARRESTED

During 2014, a total of 18 offenders were reported for rape. Of the 18 offenders a total of 14 perpetrators were arrested for rape.

## OFFENDER BY AGE GROUP

The age group that reported the highest number of offenders: 25-29.

(See figure: 21)

## OFFENDER BY AGE TYPE

Adult: 13.

Juvenile: 5.

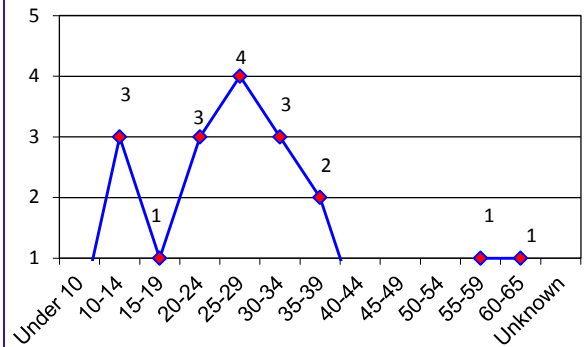
(See figure: 22)

## OFFENDER BY ETHNICITY

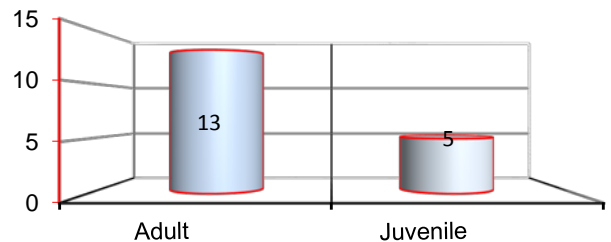
Offenders: 100% Hispanic.

(See figure: 23)

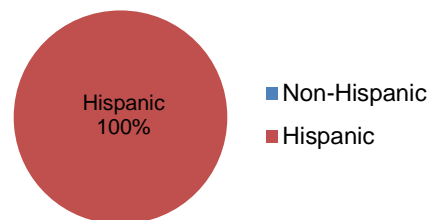
**Forcible Rape: Offender by Age Group**  
**Crime In McAllen 2014**  
**Figure: 21**



**Forcible Rape: Offender by Age Type**  
**Crime In McAllen 2014**  
**Figure: 22**



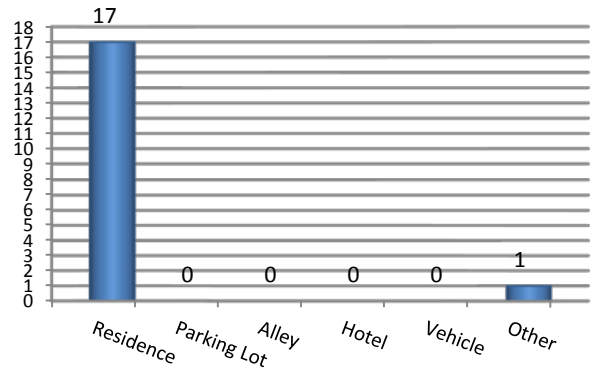
**Forcible Rape: Offender Ethnicity**  
**Crime In McAllen 2014**  
**Figure: 23**



## LOCATION OF CRIME

During 2014, the most common location where a rape was reported: Residence.  
(See figure: 24)

**Forcible Rape: Location of Crime  
Crime In McAllen 2014  
Figure: 24**



## RELATIONSHIP

The reported victim-offender relationship: 67% Family Member and 33% Non-Family Member.  
(See table: 4)

Relationship of Victim To Offender			
Table: 4			
Relationship Type	Group Percentage	Victim's Relationship	Number
FAMILY	67%	Husband	
		Ex-Husband	
		Father	2
		Step-Father	2
		Brother	1
		Step- Brother	1
		Brother -in-Law	1
		Uncle	1
		Grandfather	1
		Cousin	3
		Total	12
NON FAMILY	33%	Acquaintance	4
		Boyfriend	1
		Ex-Boyfriend	1
		Stranger	
		Total	6

# ROBBERY

---

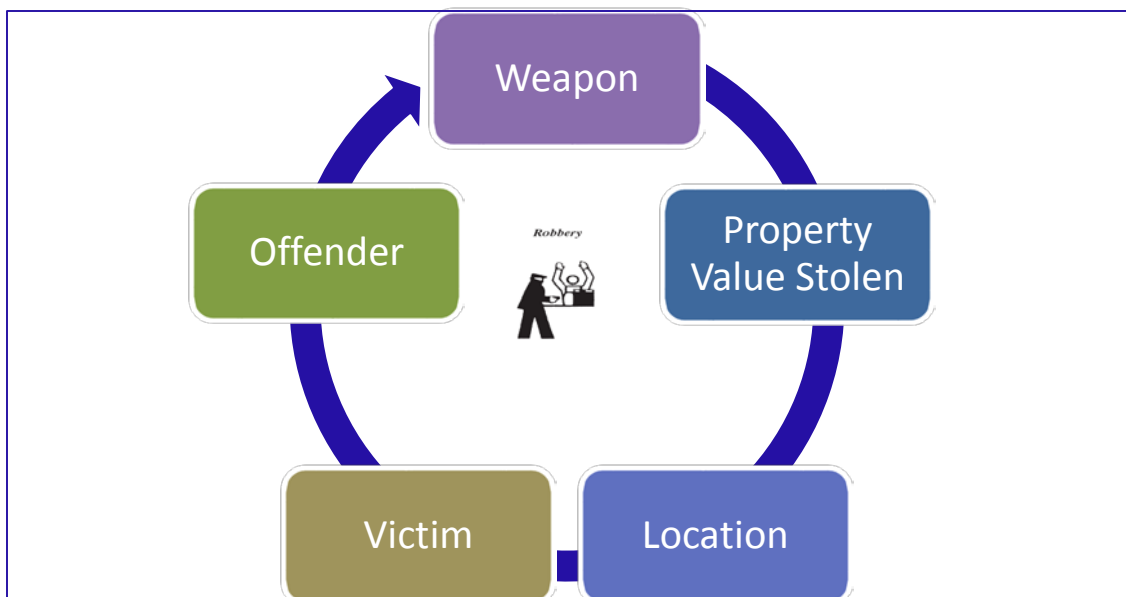
## DEFINITION

Robbery is the taking or attempting to take anything of value from the care, custody or control of a person or persons by force or threat of force or violence and/or by putting the victim in fear.

Robbery is a vicious type of theft in that it is committed in the presence of the victim. The victim, who usually is the owner or person having custody of the property, is directly confronted by the perpetrator and is threatened with force or is put in fear that force will be used. Robbery involves a theft or larceny but is aggravated by the element of force or threat of force.

Injury to the victim during the commission of this violent crime is frequent.

The following figure illustrates the data collection for the nature and extent of the Robbery Category.



## VOLUME

The total number of robberies reported during 2014 was 68 .

This represents a decrease of 18.1 % when compared to 2013.

The month recording the highest number of reported offenses was January: 12.

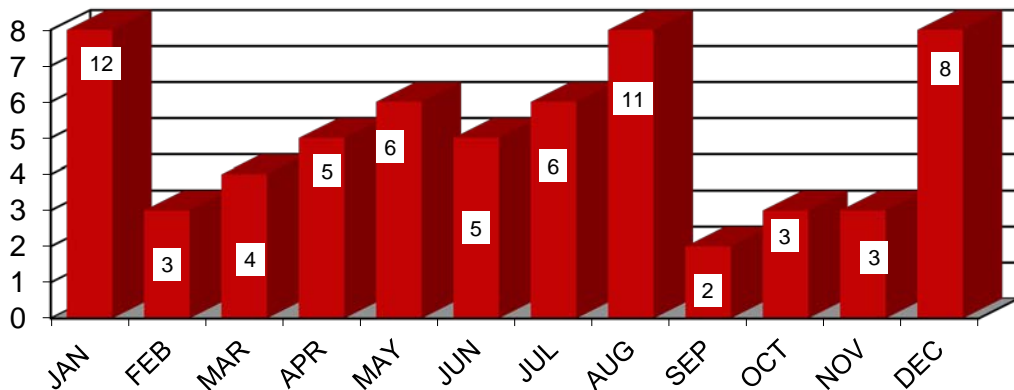
The month recording the lowest number of reported offenses was September : 2.

## RATE

The robbery rate for McAllen in 2014 was 48.0 robberies for every 100,000 residents.

This represents a decrease of 19.8% when compared to 2013.

**Summary of Index Crime: Robbery  
Crime In McAllen 2014**



# ANALYSIS

## NATURE

During 2014, property loss during the commission of robberies amounted to \$99,082. (See table: 5)

The month with the highest property loss reported was April : \$30,000.

The month with the lowest loss reported was September: \$275.

## LOCATION

Of all reported robberies in 2014, "Residence" accounted for 24% and "Other" accounted for 10% of the offenses in this category.

Robbery at "Convenience Stores" accounted for 16% of incidents reported.

### Robbery: Property Loss Values

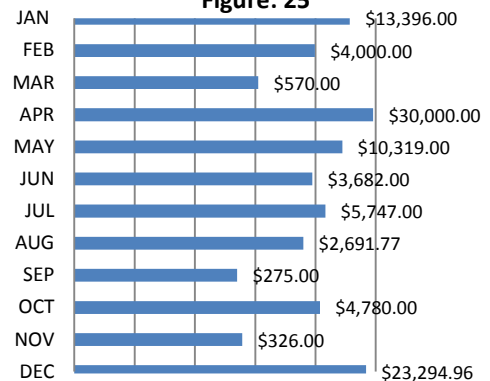
January-December 2014

Table:5

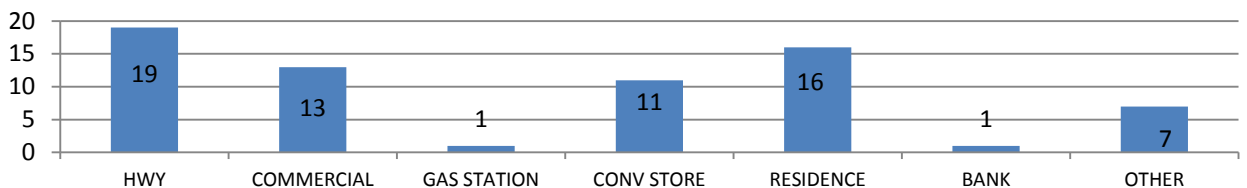
Month	TOTAL
January	\$13,396
February	\$4,000
March	\$570
April	\$30,000
May	\$10,319
June	\$3,682
July	\$5,747
August	\$2,692
September	\$275
October	\$4,780
November	\$326
December	\$23,295
Total	\$99,082

### Robbery: Property Losses Crime In McAllen 2014

Figure: 25



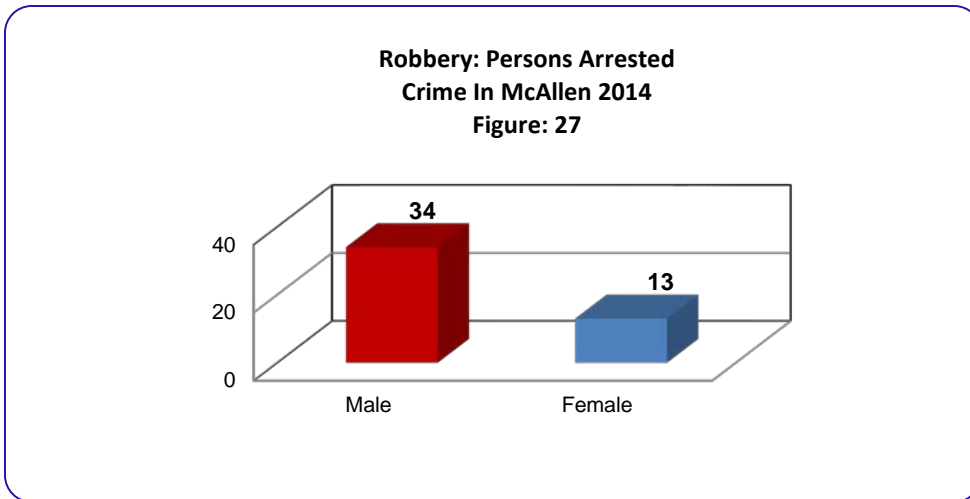
### Robbery: Losses by Location Crime In McAllen 2014 Figure:26



## PERSONS ARRESTED

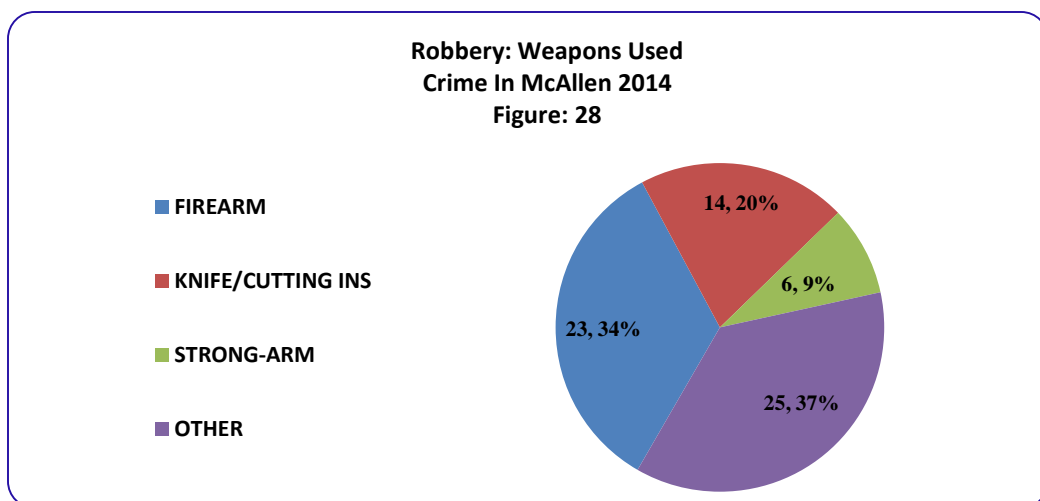
During 2014, 47 persons were arrested for robbery.

Of the persons arrested for robbery, 72% were male and 28% were female.  
(See figure: 27)



## TYPE OF WEAPON

The weapon most frequently used to commit robbery: Firearm. Firearms accounted for 34% while knife/cutting instrument accounted for 20% of reported robberies. (See figure:28)



# AGGRAVATED ASSAULT

---

## DEFINITION

Aggravated assault, as per the Uniform Crime Reporting Program is an unlawful attack by one person upon another for the purpose of inflicting severe or aggravated bodily injury. This type of assault usually is accompanied by the use of a weapon or by means likely to produce death or great bodily harm.

Aggravated assaults are classified into four different categories:

- (1) Assault with firearm
- (2) Assault with knife or cutting instrument
- (3) Assault with other dangerous weapon
- (4) Assault using strong-arm tactics





## VOLUME

During 2014, a total of 90 aggravated assaults were reported.

This represents an increase of 12.5% when compared to 2013.

The average monthly volume for aggravated assaults was 7.5.

The month recording the highest number of reported aggravated assaults was August : 18.

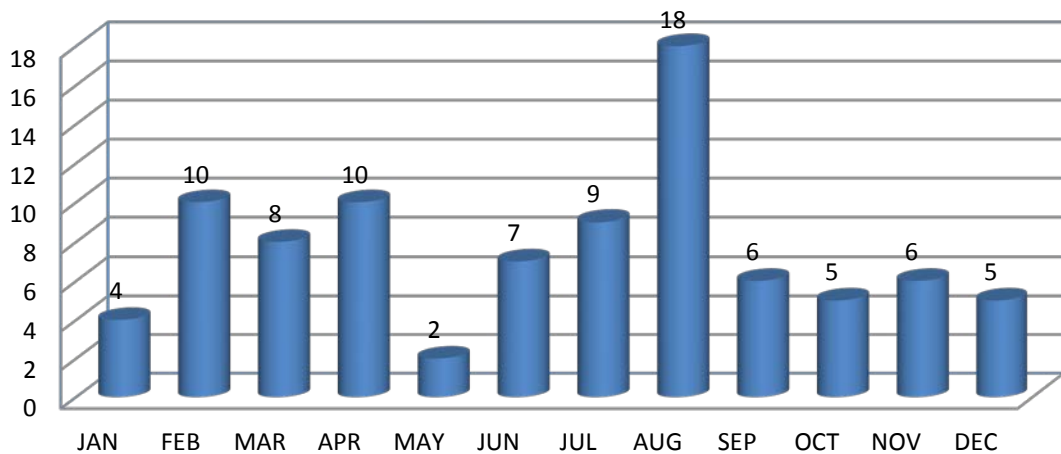
The month recording the lowest number of reported aggravated assaults was May: 2.

## RATE

The aggravated assault rate for McAllen in 2014 was 63.5 per 100,000 residents.

This represents an increase of 10.1% when compared to 2013.

**Summary of Index Crime: Aggravated Assaults  
Crime In McAllen 2014**



## ANALYSIS

### NATURE

During 2014, a total of 90 aggravated assaults were reported .

### WEAPON USED

Aggravated assaults are classified into four different categories: (1) Assault with firearm, (2) Assault with knife or cutting instrument, (3) Assault with other dangerous weapon, and (4) Assault using strong-arm tactics.

During 2014 the most frequently used weapon in the commission of an aggravated assault was Other Dangerous Weapon : 37%. This category includes, but is not limited to: clubs, bricks, tire irons, bottles, or other blunt objects reported. Knife or Cutting Instrument accounted for 32% and Firearm accounted for 26%.

(See figure: 29)

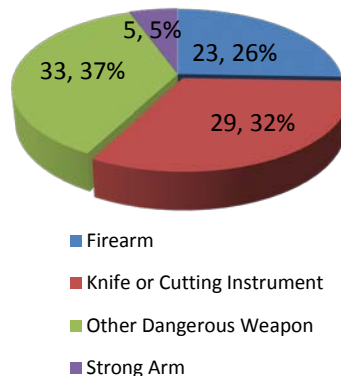
The use or attempted use of a dangerous weapon in an assault or the serious injury inflicted by hands, fists, or feet is what separates this index offense from the assault categorized as “simple assaults”.

### PERSONS ARRESTED

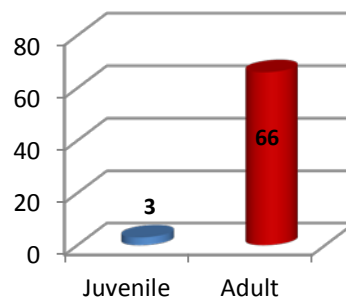
McAllen Law Enforcement Officers arrested 69 people for aggravated assaults in 2014. Of the 69 perpetrators arrested, 66 were adults and 3 were juveniles.

( See figure: 30)

**Aggravated Assault: Weapon Used  
Crime in McAllen 2014  
Figure:29**



**Aggravated Assault: By Age  
Crime in McAllen 2014  
Figure: 30**



# BURGLARY

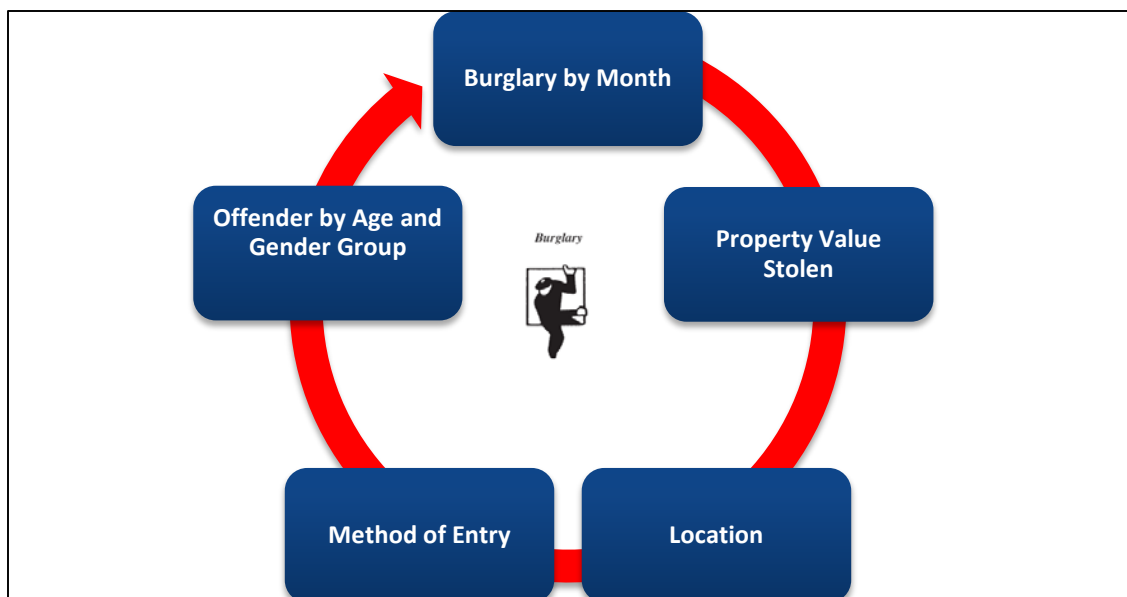
---

## DEFINITION

Burglary for Uniform Crime Reporting purposes is the unlawful entry of a structure to commit a felony or theft. Burglary can be classified as forcible entry, unlawful entry (no force) or attempted forcible entry. While the use of force to gain entry is not required to classify an offense as burglary, attempted forcible entries to commit burglary are counted in this crime's statistics.

The Uniform Crime Reporting program's definition of structure includes, but is not limited, to an apartment, barn, cabin, church, condominium, dwelling house, factory, garage, house trailer, office, school, railroad car and other buildings.

Additionally, any house trailer or other mobile unit that is permanently fixed as an office, residence, or storehouse is considered a structure.



## VOLUME

During 2014, there were 411 burglaries reported in the City of McAllen.

This represents a decrease of 23.3% when compared to 2013.

The average monthly volume was 34.

The month recording the highest reported burglary was October: 51.

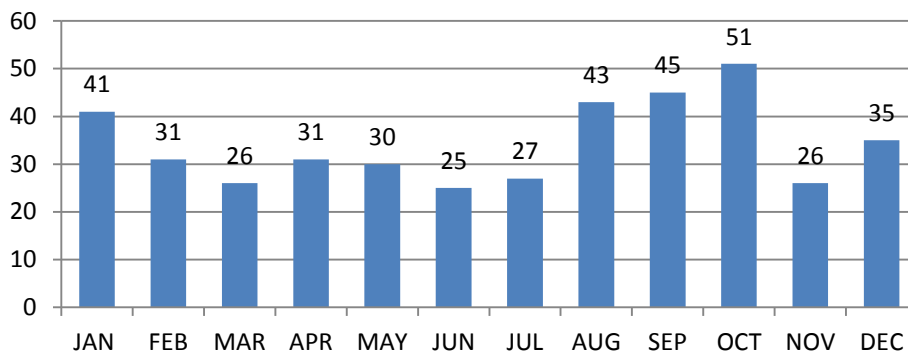
The month recording the lowest reported burglary was June: 25.

## RATE

The 2014 burglary rate was 290 burglaries for every 100,000 residents.

This represents a decrease of 25.0% when compared to 2013.

**Summary of Index Crime: Burglary  
Crime In McAllen 2014**



## ANALYSIS

The most common entry for burglary was Forcible Entry: 63%.

Non-Forcible entry accounted for 37%.

Of the number of reported burglaries 164 were residential and 247 were non-residential.

Total property loss reported for burglary was \$ 844,340.22. (See table 6)

Of the 411 burglaries, 142 were cleared by arrest.

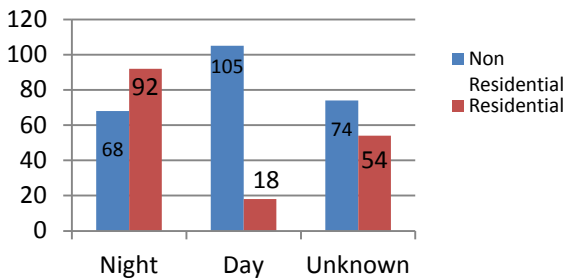
Adult males accounted for 58% of arrestees. (See figure: 33)

**Burglary: Property Loss Values  
January -December 2014**

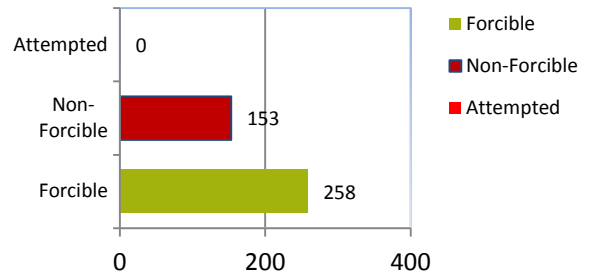
**Table: 6**

Month	Amount
January	\$140,124.88
February	\$72,100.96
March	\$73,235.97
April	\$40,166.53
May	\$61,842.24
June	\$52,173.98
July	\$62,705.93
August	\$127,745.94
September	\$51,197.35
October	\$66,981.90
November	\$45,070.98
December	\$50,993.56
<b>Total</b>	<b>\$844,340.22</b>

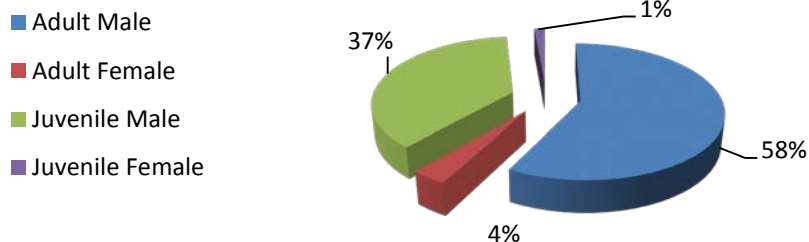
**Burglary: By Location  
Crime in McAllen 2014  
Figure: 31**



**Burglary: By Method of Entry  
Crime in McAllen 2014  
Figure: 32**



**Burglary: By Persons Arrested  
Crime in McAllen 2014  
Figure: 33**



# LARCENY (THEFT)

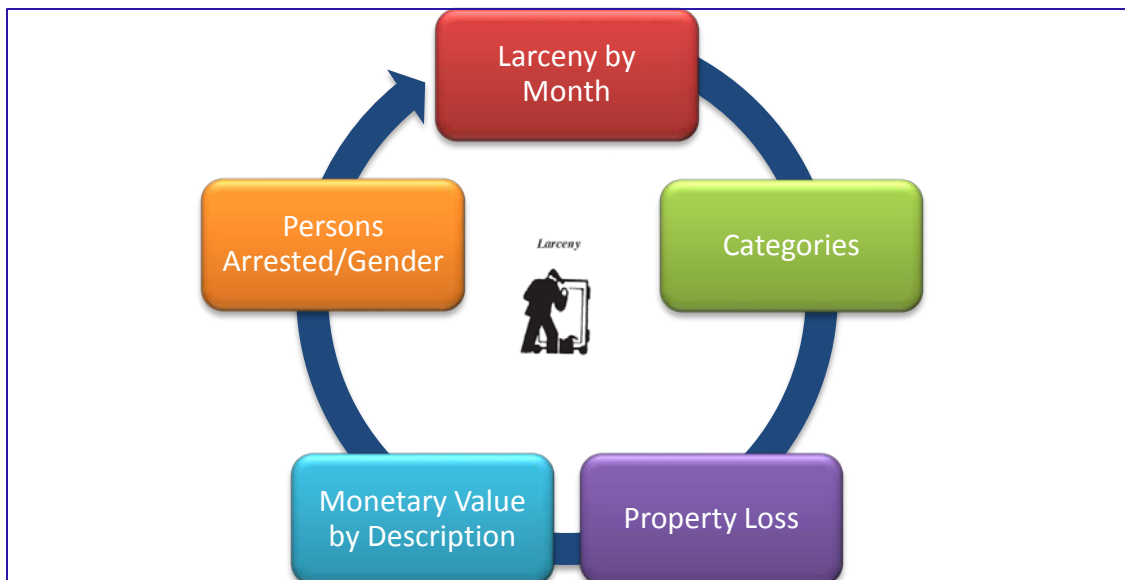
## DEFINITION

Larceny/Theft, in the Uniform Crime Reporting program, is the unlawful taking, carrying, leading, or riding away of property from the possession or constructive possession of another. Larceny/Theft includes crimes such as shoplifting, pocket-picking, purse snatching, thefts from motor vehicles, theft of motor vehicle parts and accessories, bicycle thefts, and other things of value in which no use of force, violence or fraud occurs.

In the UCR program, this crime classification does not include embezzlement, “con” games, forgery, and the passing of worthless checks. Motor vehicle theft is not included in this category as it is a separate index crime offense.

Larceny can be sub-classified into 9 different categories:

- ❖ Pocket Picking
- ❖ Purse Snatching
- ❖ Shoplifting
- ❖ Theft from Motor Vehicle
- ❖ Theft from Vehicle Parts
- ❖ Theft of Bicycles
- ❖ Theft of Building
- ❖ Theft of Coin-Operated Machines
- ❖ All Other Thefts



## VOLUME

The number of thefts committed in McAllen in 2014 was 4364.

This represents a decrease of 6.2% when compared to 2013.

This the largest crime category of the Index Crimes.

The month recording the highest number of reported theft was May: 413.

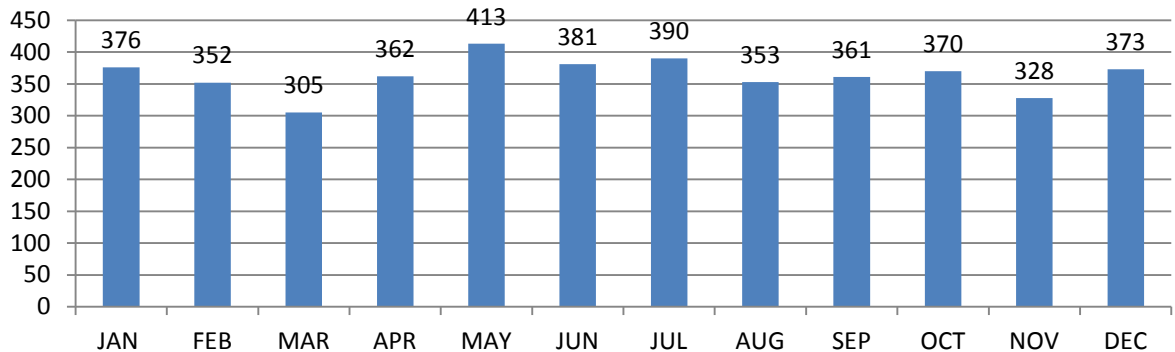
The month recording the lowest number of reported theft was March: 305.

## RATE

The 2014 Larceny rate was 3079.4 thefts per 100,000 residents.

This represents a decrease of 8.2% when compared to 2013.

**Larceny: By Month  
Crime in McAllen 2014**



# ANALYSIS

## NATURE

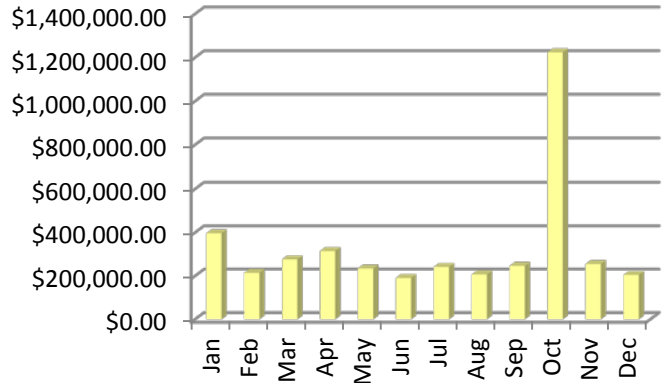
The type of theft recording the highest number of reported offenses was Shoplifting: 1788.

Shoplifting accounts for 41% of all reported theft.

Theft from Auto accounted for 24% of all reported theft.

The "Other" category accounts for all thefts not included in the type of theft listed in the Uniform Crime Reporting Program. This may include tools, lawn equipment, farm equipment,, etc. (See table: 7)

**Larceny: Property Loss  
Crime in McAllen 2014  
Figure: 34**



The month recording the highest reported property loss was October: \$1,224,117.

The month recording the lowest reported property loss was June: \$ 190,814.14.  
(See figure: 34)

**Property Stolen by Classification  
Crime In McAllen 2014**

**Table: 7**

Type of Theft	2014	2013	% CHANGE
Pick Pocket	8	8	0.0%
Purse Snatching	7	10	-30.0%
Shoplifting	1788	1618	10.51%
From Autos	1043	1243	-16.09%
Auto Parts	439	575	-23.65%
Bicycles	75	78	-3.85%
From Buildings	42	57	-26.32%
From Coin-Operated Machines	13	2	550.0%
Other	949	1061	-10.56%
<b>Total</b>	<b>4364</b>	<b>4652</b>	<b>-6.19%</b>

**Value of Property Stolen in Theft  
Crime In McAllen 2014**

**Table: 8**

Type of Theft	Offenses	Property Value	Average Loss
Pick Pocket	8	\$2,424.99	\$303.12
Purse Snatching	7	\$1,735.99	\$248.00
Shoplifting	1788	\$322,271.74	\$180.24
From Autos	1043	\$1,023,174.07	\$980.99
Auto Parts	439	\$208,451.10	\$474.83
Bicycles	75	\$13,756.81	\$183.42
From Buildings	42	\$128,708.23	\$3,064.48
From Coin-Operated Machines	13	\$1,438.00	\$110.62
Other	949	\$2,305,233.81	\$2,429.12
<b>Total</b>	<b>4364</b>	<b>\$4,007,194.74</b>	<b>\$918.24</b>



## PROPERTY CATEGORIES

Property loss is categorized into 10 property types.

Jewelry recorded the highest reported loss: \$1,513,577.

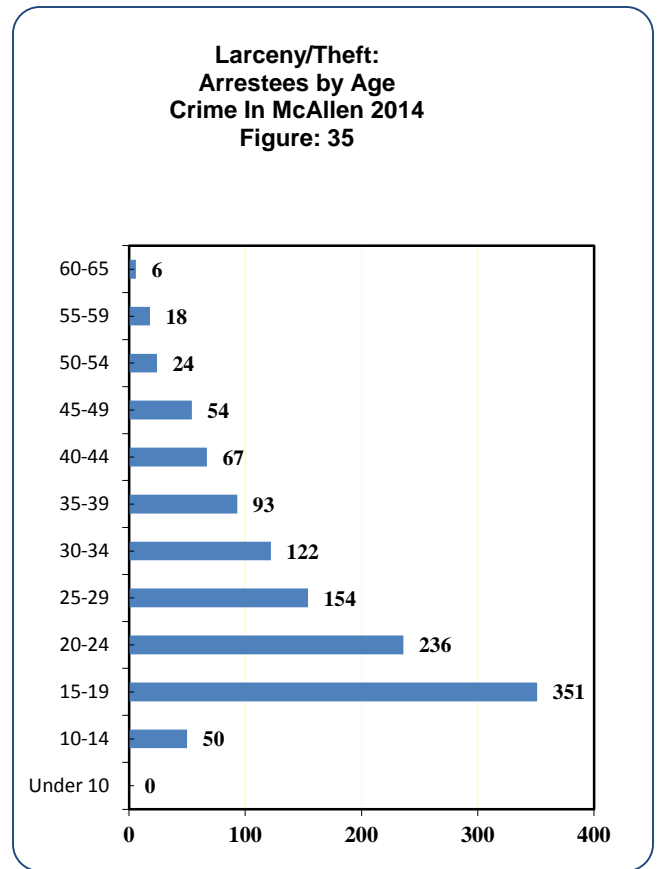
Consumable goods recorded the lowest reported loss: \$24,723.  
(See table: 7)

## Persons Arrested

McAllen Law Enforcement officers made 1186 theft arrests during 2014.

Of the subjects arrested for theft during 2014, 605 were males and 581 were female.

The age group with the largest number of theft arrestees was the 15-19 year old group with a total of 351 subjects arrested. (See figure: 35)



# MOTOR VEHICLE THEFT

---

## DEFINITION

Motor vehicle theft is a theft or attempted theft of a motor vehicle. Motor vehicle includes the theft or attempted theft of a motor vehicle, which the UCR Program defines as a self-propelled vehicle that runs on land surface and not on rails.

The Category of motor vehicle theft is further sub categorized into three subcategories:

**1. Automobiles:**

The automobile category includes all sedans, station wagons, coupes, convertibles, and other similar vehicles whose primary purpose is to transport persons from one place to another.

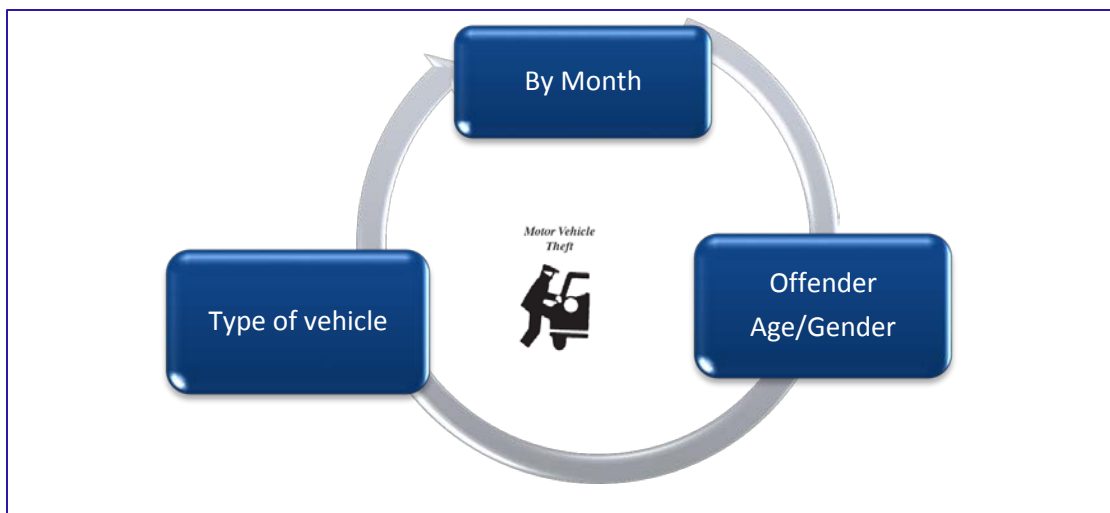
**2. Trucks & Buses:**

The Truck & Buses category includes vehicles whose purpose is to transport persons for a commercial basis. This includes pick-up trucks, vans, and self propelled motor homes.

**3. Other Vehicle Category:**

The other vehicle category includes vehicles such as scooters, motorcycles, snowmobiles, mopeds, and golf carts, etc.

*Specifically excluded from this category are motor boats, construction equipment, airplanes, and farming equipment.*

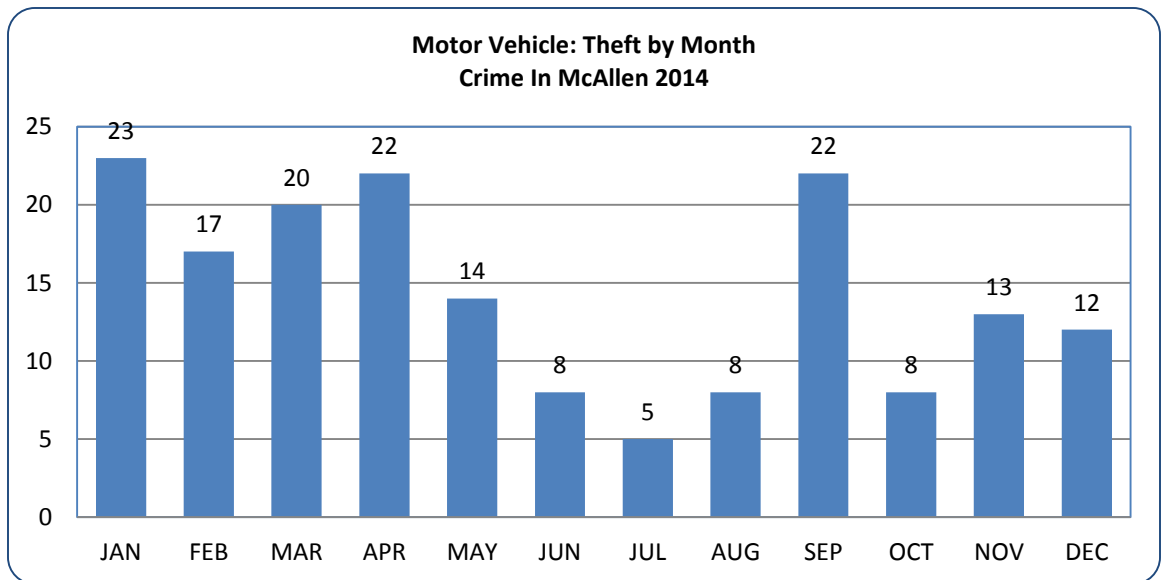


## VOLUME

- ❖ During 2014 a total of 172 motor vehicle thefts were reported.
- ❖ This represents a decrease of 27.1% when compared to 2013.
- ❖ The average monthly motor vehicle theft was 14.
- ❖ The highest monthly loss was January with 23 motor vehicle thefts reported.
- ❖ The lowest monthly loss was July with 5 motor vehicle thefts reported.

## RATE

- ❖ The motor vehicle theft rate for McAllen in 2014 was 121.4 thefts for 100,000 residents.
- ❖ This represents a decrease of 28.7% when compared to 2013.



# ANALYSIS

## Nature

Based on the data compiled for 2014, the number of motor vehicles thefts reported in the City of McAllen was 172. The property loss in Motor Vehicle Theft is the second highest reported loss in property for the City of McAllen. The loss is largely due to the value of the vehicles, which is greater than the value of other tangible items reported in the other Property Index crimes.

## Type Of Vehicle Stolen

Of the 172 reported motor vehicle thefts, 60% were Trucks, 35% were Autos and 5% were Other category. (See figure:36)

## Persons Arrested

During 2014, the number of persons arrested for Motor Vehicle Theft was 32. (See figure: 37)

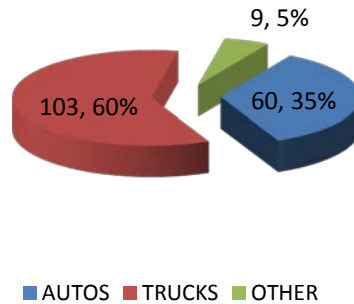
Of those arrested for Motor Vehicle Theft, 29 were males and 3 were females.

Of those arrested for Motor Vehicle Theft, 23 were adults and 9 were juveniles.

The 15-19 age group saw the highest on arrestees. (See figure 37.)

**Motor Vehicle Theft: Vehicle Type Stolen  
Crime In McAllen 2014**

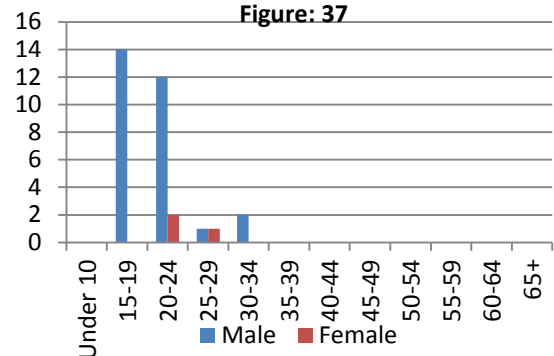
**Figure: 36**



■ AUTOS ■ TRUCKS ■ OTHER

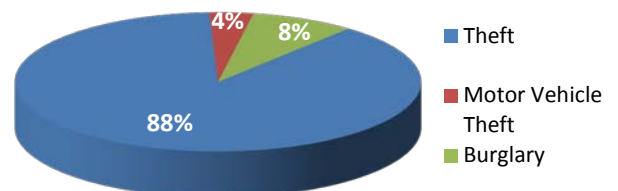
**Motor Vehicle Theft:  
Arrestees by Age And Gender  
Crime In McAllen 2014**

**Figure: 37**



**Property Crimes: Loss by Index Crime  
Crime In McAllen 2014**

**Figure: 38**



■ Theft  
■ Motor Vehicle Theft  
■ Burglary

# Chapter Three

## Selected Non-Index Crimes

# **SELECTED NON-INDEX CRIMES 2014**

---

There are selected crimes that have been chosen to represent important and essential information with respect to Part II offenses. As with all Part II non-index crimes, information on the number of reported crimes is not collected by the UCR Program for these offenses; however, the number of persons arrested for this crime is collected.

The following are the non-index crimes:

- ❖ Driving Under the Influence (DUI) Arrests
- ❖ Drug Abuse Arrests
- ❖ Drug Seizures
- ❖ Weapons Arrests

# SELECTED NON-INDEX CRIMES:

## D.U.I ARRESTS 2014

### DEFINITION

For UCR purposes, Driving Under the Influence (D.U.I) is the driving or operating any motor vehicle or common carrier while under the influence of liquor or narcotics. This includes operating a motor vehicle, train, streetcar, boat, etc.

### ANALYSIS

#### Volume

As with Part II non-index crimes, information on the number of reported crimes is not collected by the UCR program for this offense. However, the number of persons arrested for this crime is collected.

The number of arrests for D.U.I in McAllen in 2014 was 771. The volume of arrests increased by 5 percent when compared to 2013.

#### Rate

The 2014 D.U.I. arrest rate was 544 per 100,000 residents. This represents an increase of 2.8% when compared to 2013.

#### PERSONS ARRESTED

Of the persons arrested in 2014, the age group recording the highest number of arrests: 20-24 age group. (See figure: 40)

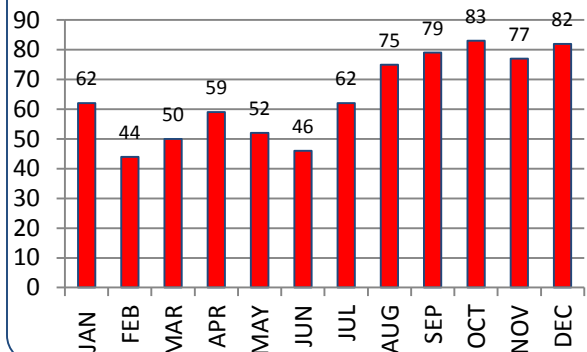
The month with the most arrests was October: 83.

The month with the fewest arrests was in February: 44.

(See figure:39)

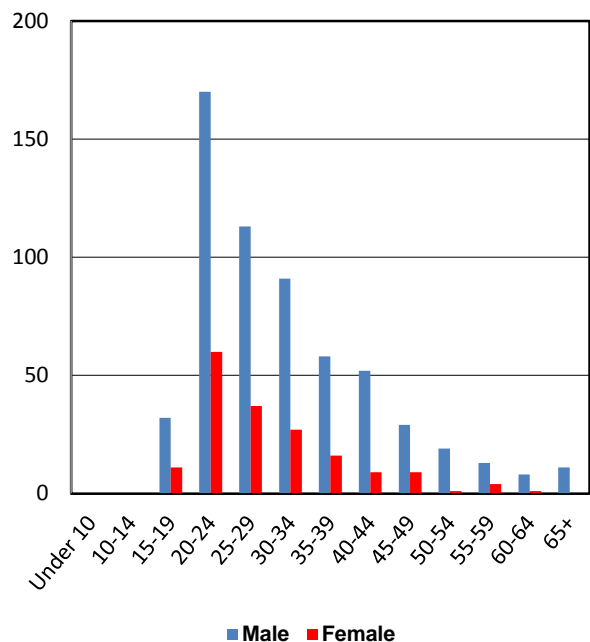
D.U.I. : Monthly Arrests  
Crime In McAllen 2014

Figure: 39



D.U.I: Arrestees by Age  
Crime In McAllen 2014

Figure: 40



# SELECTED NON-INDEX CRIMES:

## DRUG ABUSE ARRESTS 2014

### DEFINITION

For UCR purposes, drug abuse encompasses all violations of the narcotic drug laws. These are offenses such as unlawful possession, sale, use, growing, and manufacturing of narcotic drugs.

In this report, these violations are summarized to include all drug abuse arrests (grand total drug abuse), sale and manufacturing arrests, and drug possession arrests.

As with all Part II non-index crimes, information on the number of reported crimes is not collected for the UCR program. However, the number of persons arrested for these crimes is collected.

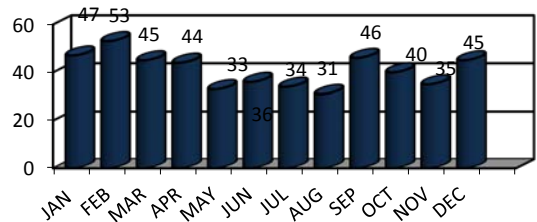
### Arrests

The reported number of arrests for possession of drugs in McAllen in 2014 was 459. Of those arrested, 414 were Adult and 45 were Juvenile.

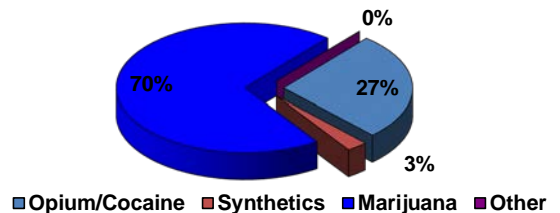
The age group recording the largest number of persons arrested for drug possession violations: 20-24.

The largest number of Possession arrests were for Marijuana: 70%, followed by Opium/Cocaine: 27%.

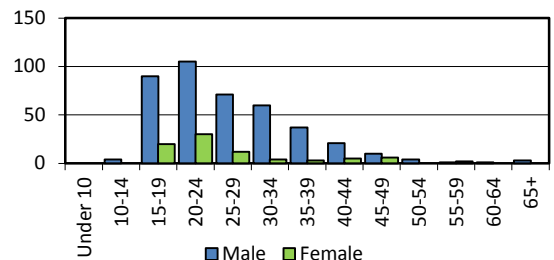
Drug Abuse: By Month  
Crime In McAllen 2014  
Figure: 41



Drug Possession Arrests by Drug Type  
Crime In McAllen 2014  
Figure: 42



Drug Abuse Arrestees by Age  
Crime In McAllen 2014  
Figure: 43





# SELECTED NON-INDEX CRIMES:

## DRUG SEIZURE 2014

---

### DEFINITION

Drug seizure information is presented in compliance with Health & Safety Code Section 481.185 and its requirement that "All law enforcement agencies in this state shall file monthly with the (DPS) Director a report of all arrests for drug offenses made and quantities of controlled substances seized by them during the preceding month."

### DRUG SEIZURES: TYPE QUANTITY

The chart below displays the quantity of illegal drugs seized in the City of McAllen during 2014. (See table: 9)

Dose units refer to one pill, tablet, capsule, or other single user quantity. The information presented are drugs seized by the McAllen Police Department and do not include drugs seized by any federal law enforcement agency.

Drug Seizures: Type and Quantity Crime In McAllen 2014 Table: 9		
Class	Type	Quantity
Cannabinoids	Marijuana	8,801.11lbs.
Opiates	Heroin	0 lbs.
Cocaine	Cocaine	457.09lbs.
	Crack	0
Hallucinogens	Designer Drugs	0
Other Drugs	Barbiturates	0
	Amphetamines	0
	Meth-amphetamines	38.32 lbs.
	Tranquilizers	0

# SELECTED NON-INDEX CRIMES:

## WEAPONS ARRESTS 2014

### DEFINITION

As with all Part II non-index offenses, the UCR Program collects reports of arrests for this offense. Weapon offenses are violation of laws or ordinances “prohibiting the manufacture, sale purchase, transportation, possession, concealment, or use of firearms, cutting instruments, explosives, incendiary devices, or other deadly weapons”.

### ANALYSIS

As previously indicated in this report, firearms accounted for 26% of all Aggravated Assaults in the City of McAllen.

#### NATURE

During 2014, the month recording the highest number of arrests was December: 5. (See figure:44)

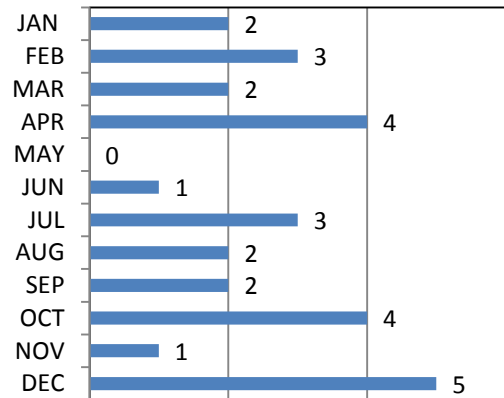
#### PERSONS ARRESTED

Of the 29 subjects arrested, 25 were male and 4 were female.

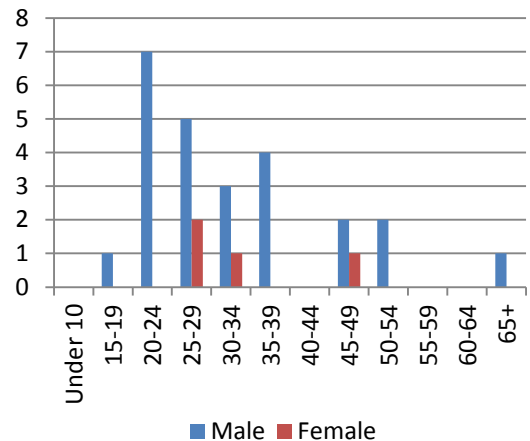
The age group recording the highest number of arrests for weapon violations: 20-24.

(See figure: 45)

**Weapon Arrest: By Month  
Crime In McAllen 2014  
Figure: 44**



**Weapons Arrestees: By Age Group  
Crime In McAllen 2014  
Figure: 45**



# Chapter Four

## Family Violence

# FAMILY VIOLENCE

## DEFINITION

The Texas Family Code defines Family Violence as an Act by a member of a family or household against another member that is intended to result in physical harm, bodily injury, assault, or a threat that reasonably places the member in fear of imminent physical harm.

The law excludes the reasonable discipline of a child and defines abuse as physical injury that results in substantial harm or genuine threat; sexual contact, intercourse, or conduct; or compelling or encouraging the child to engage in sexual conduct.

By definition and for the purpose of family violence reports, “family” includes individuals related by consanguinity (blood) or affinity, marriage or former marriage, biological parents of the same child, foster children, foster parents, and member or former members of the same household (including roommates). Senate Bill 68 of the 77<sup>th</sup> Legislature amended the Family Code to include “Dating Violence”. The “Dating Relationship” means a relationship between individuals who have or have had continuing relationship of romantic or intimate nature.

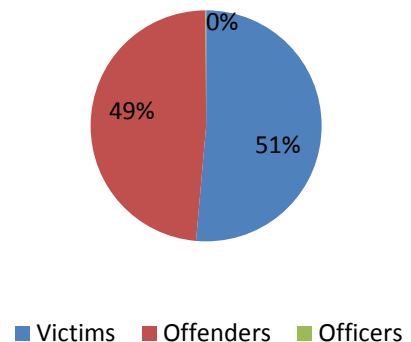
## ANALYSIS

During 2014, the total number of Family Violence incidents reported were 576.

The most common relationship reported was the “spouse” category.

In family violence the use of personal weapon (strong-arm) accounted for 93 percent

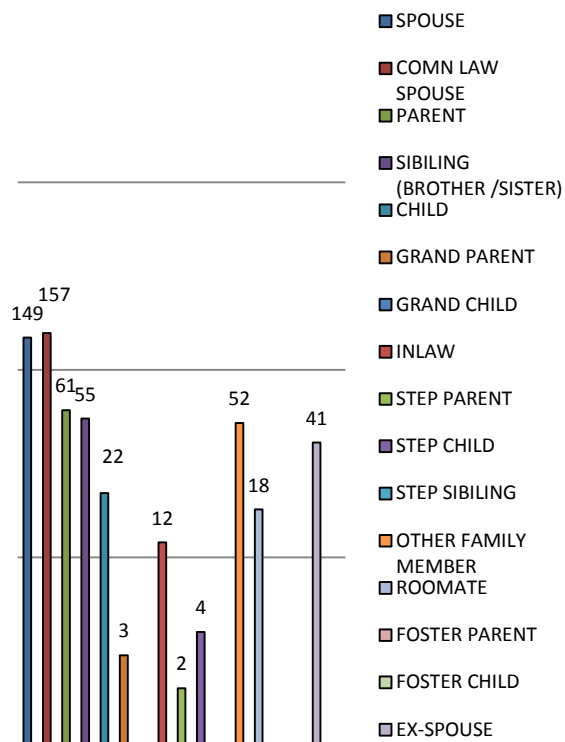
Family Violence  
Crime In McAllen 2014  
Figure: 46



During 2014, there were 576 family violence incidents reported. Of the incidents reported 51 percent accounted for victims and 49 percent were offenders. During 2014, during the course of responding to family violence incidents 1 officers were assaulted.

The victim relationship category with the most was common-law spouse with 157 incidents reported. The second most commonly reported relationship was the spouse category with 149. (See figure: 47)

**Family Violence: Relationship to Victim  
Crime In McAllen 2014  
Figure: 47**



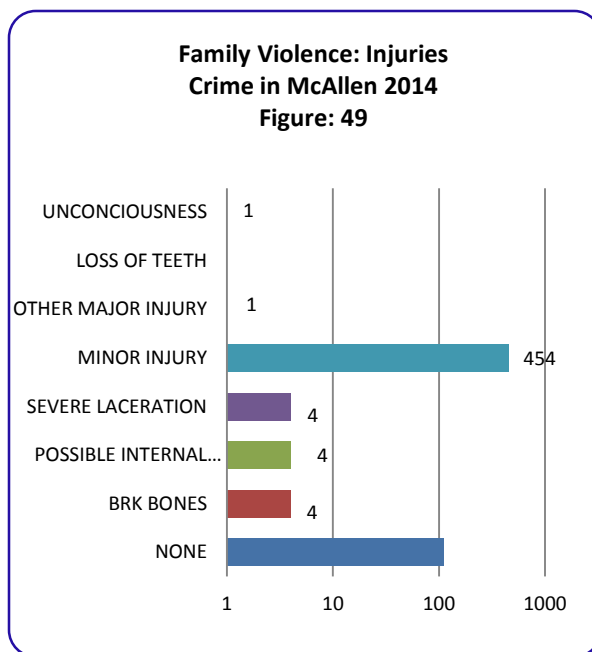
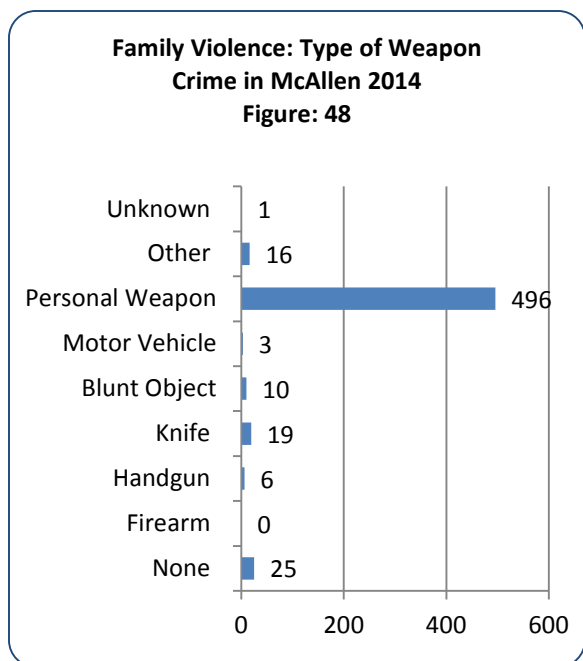
## FAMILY VIOLENCE DATA-2014

**Table: 10**

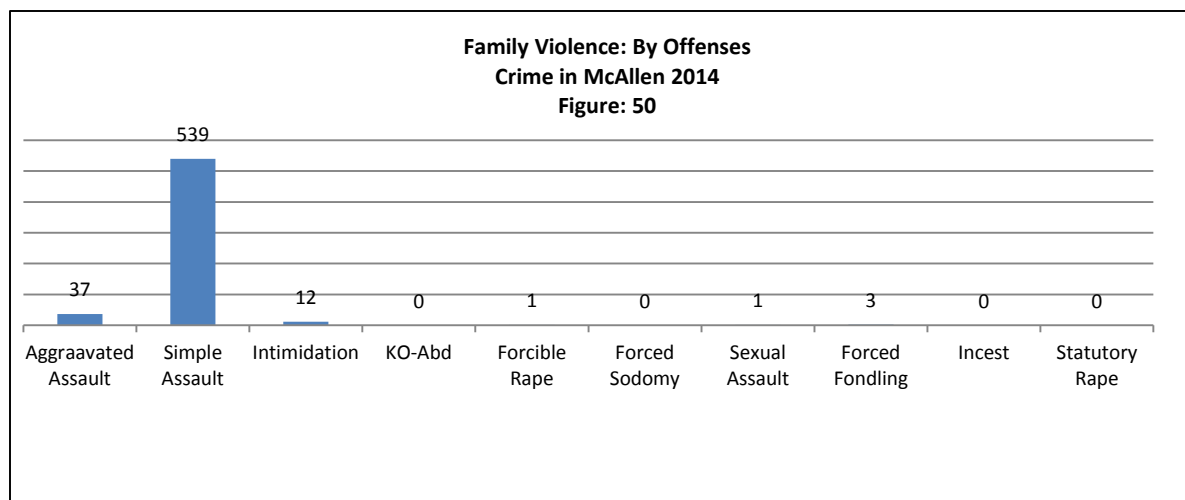
DESCRIPTION	TOTAL
Victims	646
Offenders	610
<b>TYPE OF INJURY</b>	
None	110
Broken Bones	0
Possible Internal	4
Severe Laceration	4
Minor Injury	454
Major Injury	2
Unconscious	1
<b>OFFENSES</b>	
Aggravated Assault	37
Simple Assault	539
Intimidation	12
Kidnapping-Abduction	0
Forced Rape	1
Forced Sodomy	0
Sexual Assault	0
Forced Fondling	3
Incest	0
Statutory Rape	1
<b>TYPE OF WEAPON</b>	
None	25
Firearm	0
Handgun	6
Knife	19
Blunt Object	10
Motor Vehicle	3
Personal Weapon	496
Other	16
Unknown	1

The most common weapon involved in family violence cases was Strong-Arm: 86%.

For purpose of family violence reports, the McAllen Police Officers who responded to disturbance calls determined the extent of all injuries were considered apparent injuries. The majority of reported injuries were considered to be Minor Injuries: 78%.

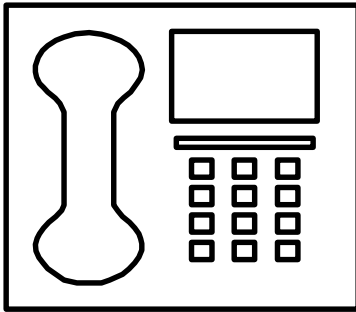


Offense information in the family violence program is collected according to the Uniform Crime Reporting guidelines and does not necessarily conform to Texas definitions. Complete offense definitions are available in the appendix to this report. Of the offenses listed in chart below, Simple Assault accounted for 91 percent of offenses.



# Chapter Five

## Calls For Service



# Calls for Service

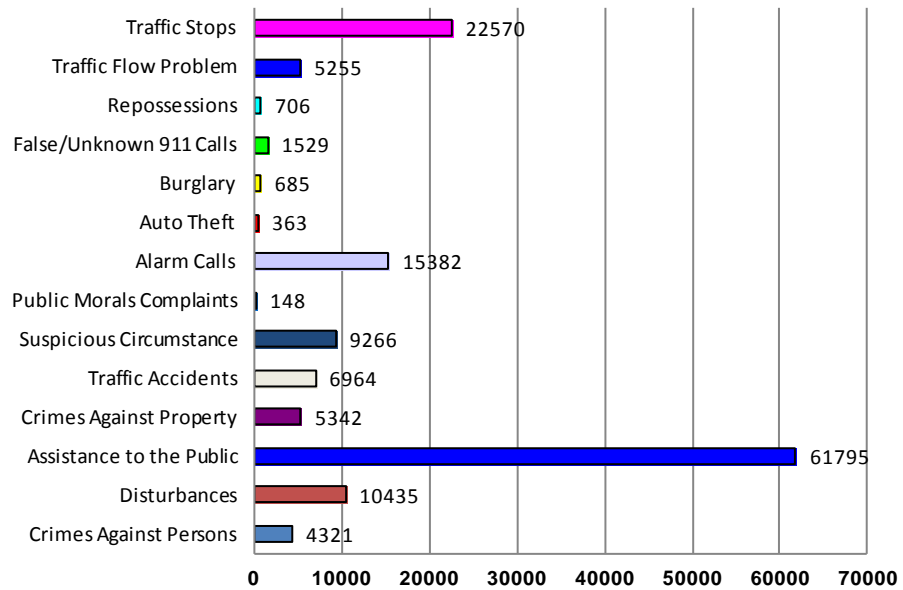
During 2014, the department responded to 144,761 calls for service. This represents a decrease of 1.9 percent when compared to 2013.



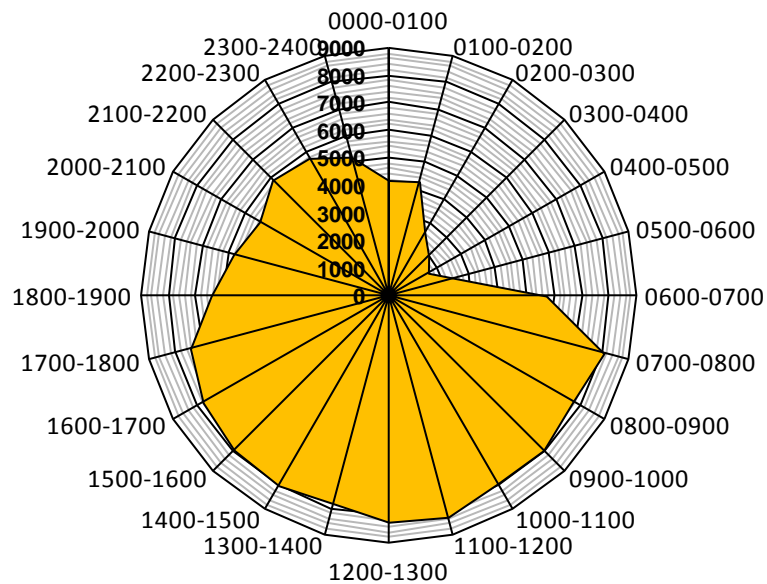
This mode of display represents the annual ratio of calls for service to fixed time intervals. This is an aggregate representation of data, it is designed to convey the annual service call experience by showing the relative frequency of occurrence.



**Calls for Service  
Crime In McAllen 2014  
Figure: 51**



**Calls by Hour  
Crime In McAllen 2014  
Figure: 52**



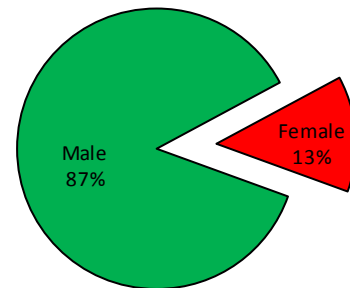
# Chapter Six

## Law Enforcement Personnel

## COMMISSIONED PERSONNEL

The City of McAllen is authorized 285 sworn officers, and is at 97 percent of full strength. The number of officers per 1000 citizens of McAllen was 2.01. Of the current strength 87 percent are male and 13 percent are female.

**Percentage of Male and Female Sworn Officers**  
**Figure: 53**

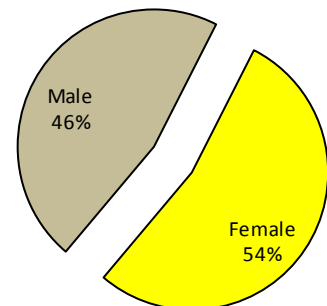


## CIVILIAN PERSONNEL

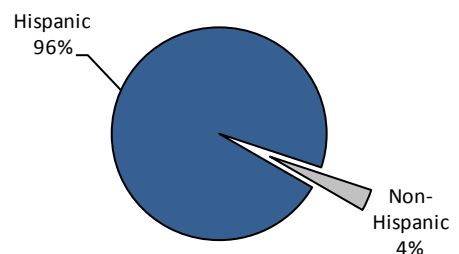
The Police Department is authorized 151 civilian employees.

The McAllen Police Department employs 138 civilian employees, which include Community Service Specialists, Emergency Communications Specialists, Custodians, Records Clerks, Administrative Assistants, Secretaries, Crime Statistician, Animal Wardens, and Fleet Maintenance Personnel. 133 of the civilian employees are non-exempt, and 5 are exempt employees. Of the civilian employees 46 percent are male and 54 percent are female.

**Percentage of Male and Female Civilian Employees**  
**Figure: 54**



**Employee Ethnicity**  
**Figure: 55**



# Chapter Seven

## McAllen Arrest Data

## SUMMARY OF ARREST DATA 2014

CLASSIFICATION OF OFFENSE		Juvenile		Adult		Total	Percentage Combined
Murder and Nonnegligent Manslaughter	01a	0	0%	7	0%	7	0%
Manslaughter by Negligence	01b	0	0%	0	0%	0	0%
Forcible Rape	2	6	1%	12	0%	18	0%
Robbery	3	7	1%	40	1%	47	1%
Aggravated Assault	4	3	0%	66	1%	69	1%
Burglary -Breaking or Entering	5	55	8%	87	2%	142	2%
Larceny-Theft (Except Motor Vehicle)	6	236	35%	950	19%	1186	21%
Motor Vehicle Theft	7	9	1%	23	0%	32	1%
Other Assaults	8	58	9%	415	8%	473	8%
Arson	9	0	0%	2	0%	2	0%
Forgery & Counterfeiting	10	1	0%	12	0%	13	0%
Fraud	11	3	0%	48	1%	51	1%
Embezzlement	12	0	0%	5	0%	5	0%
Stolen Property;Buying,Receiving, Possessing	13	6	1%	50	1%	56	0%
Vandalism	14	0	0%	0	0%	0	0%
Weapons;Carrying,Possessing,etc.	15	1	0%	28	1%	29	1%
Prostitution and Commercialized Vice -Total	16	0	0%	6	0%	6	0%
Prostitution	16a	0	0%	0	0%	0	0%
Assisting or Promoting Prostitution	16b	0	0%	0	0%	0	0%
Purchasing Prostitution	16c	0	0%	0	0%	0	0%
Sex Offenses (Except Forcible Rape and	17	6	1%	18	0%	24	0%
<b>Drug Abuse Violations Grand Total</b>	<b>18</b>	<b>46</b>	<b>7%</b>	<b>443</b>	<b>9%</b>	<b>489</b>	<b>8%</b>
<b>(1) Sale/Manufacturing Subtotal 180</b>		<b>1</b>	<b>0%</b>	<b>29</b>	<b>1%</b>	<b>30</b>	<b>1%</b>
Opium or Cocaine and Their Derivatives (Morphine,Heroin,Codeine)	a	1	0%	28	1%	29	1%
Marijuana	b	0	0%	0	0%	0	0%
Synthetic Narcotics-Manufactured Narcotics which can cause True drug Addiction (Demoral, Methadones)	c	0	0%	1	0%	1	0%
Other Dangerous Non-Narcotic Drugs (Barbiturates,Benzedrine)	d	0	0%	0	0%	0	0%
<b>(2) Possession Subtotal 185</b>		<b>45</b>	<b>7%</b>	<b>414</b>	<b>8%</b>	<b>459</b>	<b>8%</b>
Opium or Cocaine and Their Derivatives	e	4	1%	118	2%	122	2%
Marijuana	f	38	6%	283	6%	321	6%
Synthetic Narcotics-Manufactured Narcotics which can cause True drug Addiction (Demoral, Methadones)	g	2	0%	10	0%	12	0%
Other Dangerous Non-Narcotic Drugs (Barbiturates,Benzedrine)	h	1	0%	3	0%	4	0%
<b>Gambling Total</b>	<b>19</b>	<b>0</b>	<b>0%</b>	<b>0</b>	<b>0%</b>	<b>0</b>	<b>0%</b>
Bookmaking (Horse and Sport Book)	a	0	0%	0	0%	0	0%
Numbers and Lottery	b	0	0%	0	0%	0	0%
All other Gambling	c	0	0%	0	0%	0	0%
Offenses Against Family and Children	20	1	0%	26	1%	27	0%
Driving Under the Influence	21	4	1%	767	15%	771	13%
Liquor Laws	22	0	0%	1	0%	1	0%
Drunkness	23	19	3%	1015	20%	1034	18%
Disorderly Conduct	24	6	1%	75	1%	81	1%
Vagrancy	25	0	0%	0	0%	0	0%
All Other Offenses (Except Traffic)	26	63	9%	994	20%	1057	18%
Suspicion (Not Applicable in Texas)	27	0	0%	0	0%	0	0%
Curfew Violations	28	0	0%	0	0%	0	0%
Runaways	29	142	21%	0	0%	142	2%
Human Trafficking/Commercial Sex Acts	30	0	0%	0	0%	0	0%
Human Trafficking/Involuntary Servitude	31	0	0%	0	0%	0	0%
<b>TOTAL</b>		<b>672</b>	<b>100%</b>	<b>5090</b>	<b>100%</b>	<b>5762</b>	<b>100%</b>

ADULT ARREST DATA 2014																			
CLASSIFICATION OF OFFENSE		Gender																	
		GENDER	18	19	20	21	22	23	24	25-29	30-34	35-39	40-44	45-49	50-54	55-55	60-64	65 and over	TOTAL
Murder and Nonnegligent Manslaughter	01a	Male	0	0	1	0	0	0	0	4	1	0	1	0	0	0	0	0	7
		Female	0	0	0	0	0	0	0	0	0	0	0	0	0	0	0	0	0
Manslaughter by Negligence	01b	Male	0	0	0	0	0	0	0	0	0	0	0	0	0	0	0	0	0
		Female	0	0	0	0	0	0	0	0	0	0	0	0	0	0	0	0	0
Forcible Rape	2	Male	0	0	2	0	0	0	1	2	4	1	0	0	0	1	1	0	12
		Female	0	0	0	0	0	0	0	0	0	0	0	0	0	0	0	0	0
Robbery	3	Male	2	2	3	0	0	1	1	9	6	2	1	1	0	0	0	1	29
		Female	0	1	0	1	1	0	0	4	2	1	0	0	0	1	0	0	11
Aggravated Assault	4	Male	3	4	5	2	2	4	4	8	8	5	4	2	4	3	0	0	58
		Female	0	0	0	0	0	0	1	3	1	1	0	0	1	1	0	0	8
Burglary -Breaking or Entering	5	Male	15	12	7	6	2	5	6	11	10	3	2	1	1	1	0	0	82
		Female	1	1	0	0	0	0	0	2	0	0	0	0	0	1	0	0	5
Larceny-Theft (Except Motor Vehicle)	6	Male	54	36	32	32	16	15	27	78	56	46	34	28	13	9	6	1	483
		Female	37	38	33	27	25	17	12	76	66	47	33	26	11	9	5	5	467
Motor Vehicle Theft	7	Male	2	3	4	4	1	3	0	1	2	0	0	0	0	0	0	0	20
		Female	0	0	1	0	0	1	0	1	0	0	0	0	0	0	0	0	3
Other Assaults	8	Male	6	12	13	12	17	20	16	63	49	37	33	17	16	4	4	4	323
		Female	4	3	4	3	6	6	4	14	15	7	11	5	3	4	0	3	92
Arson	9	Male	0	0	0	0	1	0	0	0	0	0	0	0	0	1	0	0	2
		Female	0	0	0	0	0	0	0	0	0	0	0	0	0	0	0	0	0
Forgery & Counterfeiting	10	Male	0	0	1	0	0	1	1	0	3	1	0	0	0	0	0	0	7
		Female	0	0	0	0	0	0	0	0	2	0	2	1	0	0	0	0	5
Fraud	11	Male	0	0	0	2	0	3	3	9	4	2	6	3	0	1	0	1	34
		Female	1	0	1	0	0	0	0	6	1	2	1	0	0	2	0	0	14
Embezzlement	12	Male	1	0	0	0	0	0	1	1	0	0	0	0	0	0	0	0	3
		Female	0	0	1	0	1	0	0	0	0	0	0	0	0	0	0	0	2
Stolen Property;Buying,Receiving, Possessing	13	Male	3	5	3	3	3	1	5	7	4	3	1	0	1	0	0	1	40
		Female	2	0	2	0	0	0	1	4	0	0	1	0	0	0	0	0	10
Vandalism	14	Male	0	0	0	0	0	0	0	0	0	0	0	0	0	0	0	0	0
		Female	0	0	0	0	0	0	0	0	0	0	0	0	0	0	0	0	0
Weapons;Carrying,Possessing,etc.	15	Male	0	0	2	1	3	0	1	5	3	4	0	2	2	0	0	1	24
		Female	0	0	0	0	0	0	0	2	1	0	0	1	0	0	0	0	4
Prostitution and Commercialized Vice -Total	16	Male	0	0	0	0	0	0	0	0	1	0	2	1	0	0	0	0	4
		Female	0	0	0	0	0	0	1	0	0	0	0	1	0	0	0	0	2
Prostitution	16a	Male	0	0	0	0	0	0	0	0	0	0	0	0	0	0	0	0	0
		Female	0	0	0	0	0	0	0	0	0	0	0	0	0	0	0	0	0
Assisting or Promoting Prostitution	16b	Male	0	0	0	0	0	0	0	0	0	0	0	0	0	0	0	0	0
		Female	0	0	0	0	0	0	0	0	0	0	0	0	0	0	0	0	0
Purchasing Prostitution	16c	Male	0	0	0	0	0	0	0	0	0	0	0	0	0	0	0	0	0
		Female	0	0	0	0	0	0	0	0	0	0	0	0	0	0	0	0	0
Sex Offenses (Except Forcible Rape and Prostitution)	17	Male	0	1	0	0	0	0	1	2	2	2	4	1	1	0	0	1	16
		Female	0	0	0	1	0	0	0	1	0	0	0	0	0	0	0	0	2
Drug Abuse Violations Grand Total	18	Male	34	22	27	25	14	24	15	71	60	37	21	10	4	1	1	3	369
		Female	7	5	7	4	2	7	10	12	4	3	5	6	0	2	0	0	74
(1) Sale/Manufacturing Subtotal 180	a	Male	0	0	1	0	1	2	0	8	3	8	2	1	0	0	0	2	28
		Female	0	0	0	0	0	0	1	0	0	0	0	0	0	0	0	0	1
Opium or Cocaine and Their Derivatives	b	Male	0	0	1	0	1	2	0	8	3	8	2	1	0	0	0	2	28
		Female	0	0	0	0	0	0	0	0	0	0	0	0	0	0	0	0	0
Marijuana	c	Male	0	0	0	0	0	0	0	0	0	0	0	0	0	0	0	0	0
		Female	0	0	0	0	0	0	1	0	0	0	0	0	0	0	0	0	1
Synthetic Narcotics-Manufactured Narcotics which can cause True	d	Male	0	0	0	0	0	0	0	0	0	0	0	0	0	0	0	0	0
		Female	0	0	0	0	0	0	0	0	0	0	0	0	0	0	0	0	0
Other Dangerous Non-Narcotic Drugs (Barbiturates,Benzedrine)	e	Male	34	22	26	25	13	22	15	63	57	29	19	9	4	1	1	1	341
		Female	7	5	7	4	2	7	9	12	4	3	5	6	0	2	0	0	73
Opium or Cocaine and Their Derivatives	f	Male	6	2	7	6	4	4	2	13	15	17	13	3	2	1	1	1	97
		Female	1	2	2	0	0	1	4	3	2	2	2	0	0	0	0	0	21
Marijuana	g	Male	27	18	18	17	8	17	13	46	42	12	6	6	2	0	0	0	232
		Female	6	3	4	4	2	6	5	9	2	1	3	4	0	2	0	0	51
Synthetic Narcotics-Manufactured Narcotics which can cause True	h	Male	1	2	1	2	1	1	0	2	0	0	0	0	0	0	0	0	10
		Female	0	0	0	0	0	0	0	0	0	0	0	0	0	0	0	0	0
Other Dangerous Non-Narcotic Drugs (Barbiturates,Benzedrine)	i	Male	0	0	0	0	0	0	0	2	0	0	0	0	0	0	0	0	2
		Female	0	0	1	0	0	0	0	0	0	0	0	0	0	0	0	0	1
Gambling Total	19	Male	0	0	0	0	0	0	0	0	0	0	0	0	0	0	0	0	0
		Female	0	0	0	0	0	0	0	0	0	0	0	0	0	0	0	0	0
Bookmaking (Horse and Sport Book)	a	Male	0	0	0	0	0	0	0	0	0	0	0	0	0	0	0	0	0
		Female	0	0	0	0	0	0	0	0	0	0	0	0	0	0	0	0	0
Numbers and Lottery	b	Male	0	0	0	0	0	0	0	0	0	0	0	0	0	0	0	0	0
		Female	0	0	0	0	0	0	0	0	0	0	0	0	0	0	0	0	0
All other Gambling	c	Male	0	0	0	0	0	0	0	0	0	0	0	0	0	0	0	0	0
		Female	0	0	0	0	0	0	0	0	0	0	0	0	0	0	0	0	0
Offenses Against Family and Children	20	Male	0	0	0	0	0	1	1	1	1	4	2	2	2	0	0	0	14
		Female	1	1	0	0	0	1	0	2	3	2	1	1	0	0	0	0	12
Driving Under the Influence	21	Male	9	20	25	37	36	39	33	113	91	58	52	29	19	13	8	11	593
		Female	6	4	3	10	19	12	16	37	27	16	9	9	1	4	1	0	174
Liquor Laws	22	Male	0	0	0	0	1	0	0	0	0	0	0	0	0	0	0	0	1
		Female	0	0	0	0	0	0	0	0	0	0	0	0	0	0	0	0	0
Drunkness	23	Male	21	33	25	71	49	31	36	146	95	94	73	49	45	33	10	7	818
		Female	5	17	10	25	16	6	13	40	27	9	15	8	4	2	0	0	197
Disorderly Conduct	24	Male	3	3	4	5	3	1	4	12	13	7	2	2	4	0	1	0	64
		Female	2	0	2	0	0	0	0	2	2	1	1	1	0	0	0	0	11
Vagrancy	25	Male	0	0	0	0	0	0	0	0	0	0	0	0	0	0	0	0	0
		Female	0	0	0	0</													

# JUVENILE ARREST DATA 2014

CLASSIFICATION BY OFFENSES			GENDER	AGE						TOTAL
				Under 10	12	13-14	15	16	17	
Murder and Nonnegligent Manslaughter	01a	Male	0	0	0	0	0	0	0	
		Female	0	0	0	0	0	0	0	
Manslaughter by Negligence	01b	Male	0	0	0	0	0	0	0	
		Female	0	0	0	0	0	0	0	
Forcible Rape	2	Male	1	0	2	1	1	1	6	
		Female	0	0	0	0	0	0	0	
Robbery	3	Male	0	0	0	1	3	1	5	
		Female	0	0	1	0	1	0	2	
Aggravated Assault (Return A-4A-d)	4	Male	0	1	0	1	0	1	3	
		Female	0	0	0	0	0	0	0	
Burglary -Breaking or Entering	5	Male	0	0	5	17	20	11	53	
		Female	0	0	0	0	0	2	2	
Larceny-Theft (Except Motor Vehicle)	6	Male	0	3	18	16	39	46	122	
		Female	0	8	21	29	24	32	114	
Motor Vehicle Theft	7	Male	0	0	0	2	6	1	9	
		Female	0	0	0	0	0	0	0	
Other Assaults (Return A-4e)	8	Male	0	2	15	6	9	8	40	
		Female	0	2	1	6	6	3	18	
Arson	9	Male	0	0	0	0	0	0	0	
		Female	0	0	0	0	0	0	0	
Forgery & Counterfeiting	10	Male	0	0	0	0	0	0	0	
		Female	0	0	0	0	0	1	1	
Fraud	11	Male	0	0	0	0	0	2	2	
		Female	0	0	0	0	0	1	1	
Embezzlement	12	Male	0	0	0	0	0	0	0	
		Female	0	0	0	0	0	0	0	
Stolen Property;Buying,Receiving, Possesing	13	Male	0	0	3	1	1	0	5	
		Female	0	0	0	0	1	0	1	
Vandalism	14	Male	0	0	0	0	0	0	0	
		Female	0	0	0	0	0	0	0	
Weapons;Carrying,Possesing,etc.	15	Male	0	0	0	0	0	1	1	
		Female	0	0	0	0	0	0	0	
Prostitution and Commercialized Vice -Total	16	Male	0	0	0	0	0	0	0	
		Female	0	0	0	0	0	0	0	
Prostitution	16a	Male	0	0	0	0	0	0	0	
		Female	0	0	0	0	0	0	0	
Assisting or Promoting Prostitution	16b	Male	0	0	0	0	0	0	0	
		Female	0	0	0	0	0	0	0	
Purchasing Prostitution	16c	Male	0	0	0	0	0	0	0	
		Female	0	0	0	0	0	0	0	
Sex Offenses (Except Forcible Rape and Prostitution)	17	Male	0	2	1	1	1	0	5	
		Female	0	1	0	0	0	0	1	
Drug Abuse Violations Grand Total	18	Male	0	0	4	7	11	16	38	
		Female	0	0	0	4	1	3	8	
(1) Sale/Manufacturing	Subtotal 180	Male	0	0	0	0	0	1	1	
		Female	0	0	0	0	0	0	0	
Opium or Cocaine and Their Derivatives (Morphin,Herion,Codeine)	a	Male	0	0	0	0	0	1	1	
		Female	0	0	0	0	0	0	0	
Marijuana	b	Male	0	0	0	0	0	0	0	
		Female	0	0	0	0	0	0	0	
Synthetic Narcotics-Manufactured Narcotics which can cause True drug Addiction (Demoral, Methadones)	c	Male	0	0	0	0	0	0	0	
		Female	0	0	0	0	0	0	0	
Other Dangerous Non-Narcotic Drugs (Barbitutrates,Benzedrine)	d	Male	0	0	0	0	0	0	0	
		Female	0	0	0	0	0	0	0	
(2) Possession	Subtotal 185	Male	0	0	4	7	11	15	37	
		Female	0	0	0	4	1	3	8	
Opium or Cocaine and Their Derivatives (Morphin,Herion,Codeine)	e	Male	0	0	0	0	1	2	3	
		Female	0	0	0	0	0	1	1	
Marijuana	f	Male	0	0	4	7	9	11	31	
		Female	0	0	0	4	1	2	7	
Synthetic Narcotics-Manufactured Narcotics which can cause True drug Addiction (Demoral, Methadones)	g	Male	0	0	0	0	0	2	2	
		Female	0	0	0	0	0	0	0	
Other Dangerous Non-Narcotic Drugs (Barbitutrates,Benzedrine)	h	Male	0	0	0	0	1	0	1	
		Female	0	0	0	0	0	0	0	
Gambling Total	19	Male	0	0	0	0	0	0	0	
		Female	0	0	0	0	0	0	0	
Bookmarking (Horse and Sport Book)	a	Male	0	0	0	0	0	0	0	
		Female	0	0	0	0	0	0	0	
Numbers and Lottery	b	Male	0	0	0	0	0	0	0	
		Female	0	0	0	0	0	0	0	
All other Gambling	c	Male	0	0	0	0	0	0	0	
		Female	0	0	0	0	0	0	0	
Offenses Against Family and Children	20	Male	0	0	0	1	0	0	1	
		Female	0	0	0	0	0	0	0	
Driving Under the Influence	21	Male	0	0	0	0	1	2	3	
		Female	0	0	0	0	1	0	1	
Liquor Laws	22	Male	0	0	0	0	0	0	0	
		Female	0	0	0	0	0	0	0	
Drunkness	23	Male	0	0	1	1	4	12	16	
		Female	0	0	0	1	0	2	3	
Disorderly Conduct	24	Male	0	0	0	1	0	3	4	
		Female	0	0	0	2	0	0	2	
Vagrancy	25	Male	0	0	0	0	0	0	0	
		Female	0	0	0	0	0	0	0	
All Other Offenses (Except Traffic)	26	Male	0	0	6	7	14	13	40	
		Female	2	0	9	6	4	2	23	
Suspicion (Not Applicable in Texas)	27	Male	0	0	0	0	0	0	0	
		Female	0	0	0	0	0	0	0	
Curfew & Loitering Law Violations	28	Male	0	0	0	0	0	0	0	
		Female	0	0	0	0	0	0	0	
Runaway	29	Male	0	1	8	26	19	3	57	
		Female	0	7	26	29	23	0	85	
Human Trafficking/Commercial Sex Acts	30	Male	0	0	0	0	0	0	0	
		Female	0	0	0	0	0	0	0	
Human Trafficking/Involuntary Servitude	31	Male	0	0	0	0	0	0	0	
		Female	0	0	0	0	0	0	0	
TOTAL			3	19	87	111	148	164	672	

# APPENDICES

## UNIFORM CRIME REPORTING OFFENSES

### Part I Offenses

Offenses in Uniform Crime Reporting are divided into two groups designated as Part I and Part II offenses. Offense and arrest information is reported for the Part I offenses, while only arrest information is reported for Part II offenses.

**Criminal Homicide** – (a) Murder and non-negligent manslaughter: All willful felonious homicides as distinguished from deaths caused by negligence. Excluded are attempts to kill, assaults, to kill, suicides, accidental deaths and justifiable homicides. Justifiable homicides are limited to: the killing of a person by a law enforcement officer in the line of duty; and the killing of a person in the act of committing a felony by a private citizen; (b) Manslaughter by negligence: any death which the police investigation established was primarily attributable to gross negligence of some individual other than the victim.

**Murder and Non-Negligent Manslaughter** – The willful (non-negligent) killing of one human being by another. This includes any death due to injuries received in a fight, argument, quarrel, assault, or commission of a crime. Suicides, accidental deaths, assaults to murder, traffic fatalities and attempted murders are not included.

**Justifiable Homicide** – The killing of a person by a law enforcement officer in the line of duty; or the killing (during the commission of a felony) of a felon by a private citizen.

**Manslaughter by Negligence** – The killing of another person through gross negligence.

**Forcible Rape** – Penetration, no matter how slight, of the vagina or anus with any part of the body or object, or oral penetration by a sex organ of another person, without the consent of the victim.

**Robbery** – The taking or attempting to take anything of value from the care, custody, or control of a person or persons by force or threat of force or violence and/or by putting the victim in fear.

**Aggravated Assault** – An unlawful attack by one person upon another for the purpose of inflicting severe or aggravated bodily injury. This type of assault is usually accompanied by the use of a weapon or by means likely to produce death or great bodily harm.

**Burglary** – The unlawful entry of a structure to commit a felony or theft. This includes breaking and entering with intent to commit a larceny; housebreaking; safe cracking; and all attempts at these offenses.

**Larceny-Theft** – The unlawful taking, carrying, leading, or riding away of property from the possession or constructive possession of another. This includes pocket-picking, purse-snatching, shoplifting, theft from motor vehicles, theft of motor vehicle parts and accessories, theft of bicycles, theft from buildings, theft from coin-operated machines, and all thefts that don't fit into the above mentioned categories.

**Motor Vehicle Theft** – The theft or attempted theft of a motor vehicle, which is defined as a self-propelled vehicle that runs on land surface and not on rails.



# Glossary of Terms

**Adult** – In Texas, an adult is a person 17 years of age or over. National law provides that adults are age 18 or over. Unless otherwise indicated, this publication follows the state definition.

**Cleared by Arrest or Exceptional Means** – For Uniform Crime Reporting purposes, an offense is cleared by arrest or solved when at least one person is arrested, charged with the commission of an offense and turned over to court for prosecution. In certain situations, police are not able to follow these three steps and, if the following four conditions can be met, the offense can be cleared exceptionally: (1) the investigation has definitely established the identity of the offender; (2) there is enough information to support an arrest, charge, and turning over to the court for prosecution; (3) the exact location of the offender is known so that he could be taken into custody; (4) there is some reason outside the police control that prevents the arresting, charging, and prosecuting of the offender.

**Crime Index** – The sum of seven index offenses used to measure the extent, fluctuation and distribution of a crime in a given geographical area. Crime classifications used in the Crime Index are: murder, rape, robbery, aggravated assault, burglary, larceny-theft and motor vehicle theft. While arson is also an index offense, it is not part of the Crime Index.

**Crime Rate** – The number of offenses per 100,000 inhabitants. To calculate a crime rate, divide the population by 100,000 and then divide the number of offenses by that answer. The crime rate is useful in determining the relative frequency of crime without regard to fluctuations in population.

**Index Crime** – A crime for which reports of offenses committed are collected. Index crimes are murder, rape, robbery, aggravated assault, burglary, larceny-theft, motor vehicle theft and arson.

**Juvenile** – In Texas, a juvenile is a person 16 years of age or under.

**Non-Violent Crime** – Property crimes; the index offenses of burglary, larceny-theft and motor vehicle theft.

**Personal Weapon** – The use of hands, feet, fists and teeth as a weapon to commit a crime; also termed strong-arm weapon.

**Strong-Arm Weapons** – The use of hands, feet, fists and teeth as a weapon to commit a crime. Also termed personal weapon.

**Threat** – A declared intent to inflict bodily harm on a person.

**Violent Crime** – Consists of the Index Offenses of murder, forcible rape, robbery and aggravated assault. Also referred to as crimes against persons.