



JAVIER VILLALOBOS, Mayor
TONY AGUIRRE JR., Commissioner District 1
JOAQUIN "J.J." ZAMORA, Commissioner District 2
J. OMAR QUINTANILLA, Commissioner District 3
TANIA RAMIREZ, Commissioner District 4
VICTOR "SEBY" HADDAD, Commissioner District 5
PEPE CABEZA DE VACA, Commissioner District 6

ROEL "ROY" RODRIGUEZ, P.E., City Manager

LEGAL NOTICE

You are hereby notified that the Board of Commissioners of the City of McAllen, Hidalgo County, Texas, will hold a public hearing on Monday, June 28, 2021, at 5:00 P.M. at McAllen City Hall Commission Chambers, 1300 Houston Avenue, McAllen, Texas. The intent of the public hearing is to institute annexation proceedings, to adopt the annexation ordinance, and to order publication of the ordinance for the following described tract of land:

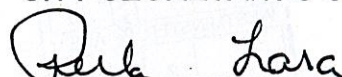
Public hearing and Ordinance providing for the annexation of 8.26 acres (deed 8.24 acres) out of the West 10 acres of the North 20 acres of Lot 405, John H. Shary Subdivision, Hidalgo County, Texas; 5951 Mile 5 Road. (ANX2021-0003)

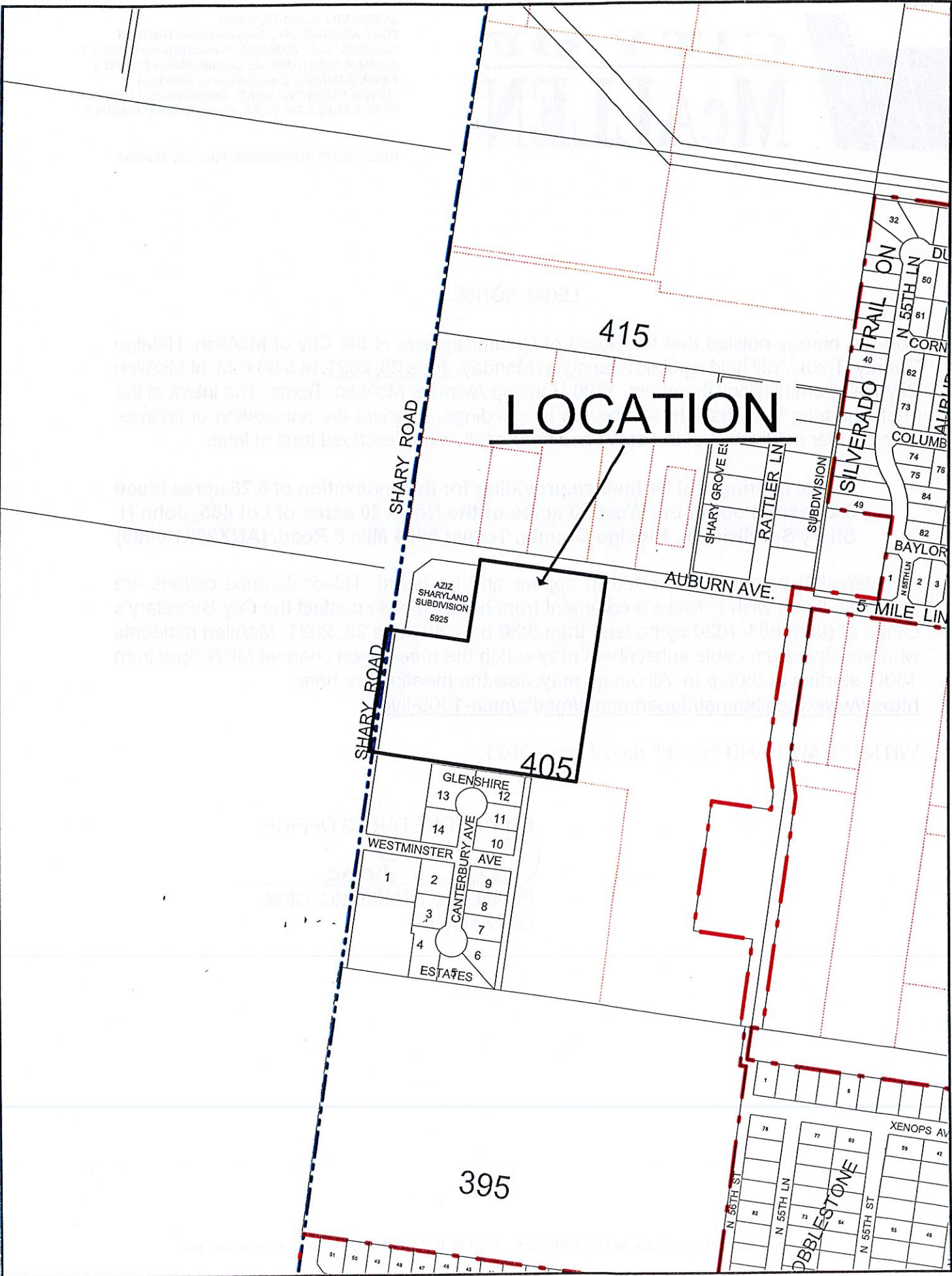
All interested persons are invited to appear and be heard. Teleconference options are available. If you wish to make a comment from home, please contact the City Secretary's Office at (956) 681-1020 by no later than 3:30 p.m. on June 28, 2021. McAllen residents who are Spectrum cable subscribers may watch the meeting on channel MCN Spectrum 1300, starting at 5:00 p.m. All others may view the meeting live here:

<https://www.mcallen.net/departments/media/mcn-1300-live>.

WITNESS MY HAND this 16th day of June, 2021.

CITY SECRETARY'S OFFICE


Perla Lara, TRMC/CMC, CPM
City Secretary



415

LOCATION

SHARY ROAD

SHARY ROAD

AZIZ SHARYLAND SUBDIVISION 5925

405

GLENSHIRE 12

13

11

14

10

WESTMINSTER AVE

1

2

9

3

8

4

7

6

CANTERBURY AVE

ESTATES

AUBURN AVE.

5 MILE LN

SILVERADO TRAIL ON

32

60

61

CORNER

62

73

COLUMB

74

75

76

84

82

BAYLOR

1

2

3

N 55TH LN

395

N 56TH ST

N 55TH LN

DBBLESTONE

N 55TH ST

XENOPS AV

78

77

60

59

42

82

81

80

79

46

83

82

81

80

79

84

83

82

81

80

51

50

49

48

47

46

45