

**RESOLUTION 2008 -
IMPLEMENTING ANNEXATION PROCEDURES**

**STATE OF TEXAS
COUNTY OF HIDALGO**

WHEREAS, the City of McAllen is a home rule municipal corporation of Hidalgo County, Texas; and

WHEREAS, an enumerated power of the City of McAllen under its Charter is the annexation of territory within its extraterritorial jurisdiction; and

WHEREAS, the Board of Commissioners of the City of McAllen has established a procedure for the annexation of territory in Ordinance No. 1981-96, said ordinance setting out in detail the procedure for voluntary and City initiated annexation; and

WHEREAS, the Board of Commissioners of the City of McAllen deems it in the best interest of the health, safety, and welfare of those persons residing within those areas shown on Exhibit A attached hereto, that said areas be annexed into the corporate limits of the City of McAllen, thereby affording those persons residing therein to have all the rights and privileges to which they are entitled.

NOW, THEREFORE, BE IT RESOLVED BY THE BOARD OF COMMISSIONERS OF THE CITY OF McALLEN, TEXAS THAT:

SECTION 1: The Director of Planning of the City of McAllen is hereby authorized and directed to implement procedures required under State law and the Charter and ordinances of the City of McAllen to annex the tracts of land as hereinafter described in Exhibit A attached hereto.

SECTION 2: The Director of Planning is further directed to comply with the procedures for such annexations as prescribed in Ordinance No. 1981-96.

READ, CONSIDERED, PASSED and **APPROVED** this 14th day of April, 2008 at a regular meeting of the Board of Commissioners of the City of McAllen at which a quorum was present and which was held in accordance with Chapter 551 of the Local Government Code.

SIGNED this ____ day of April, 2008.

CITY OF McALLEN

By: _____
Richard Cortez, Mayor

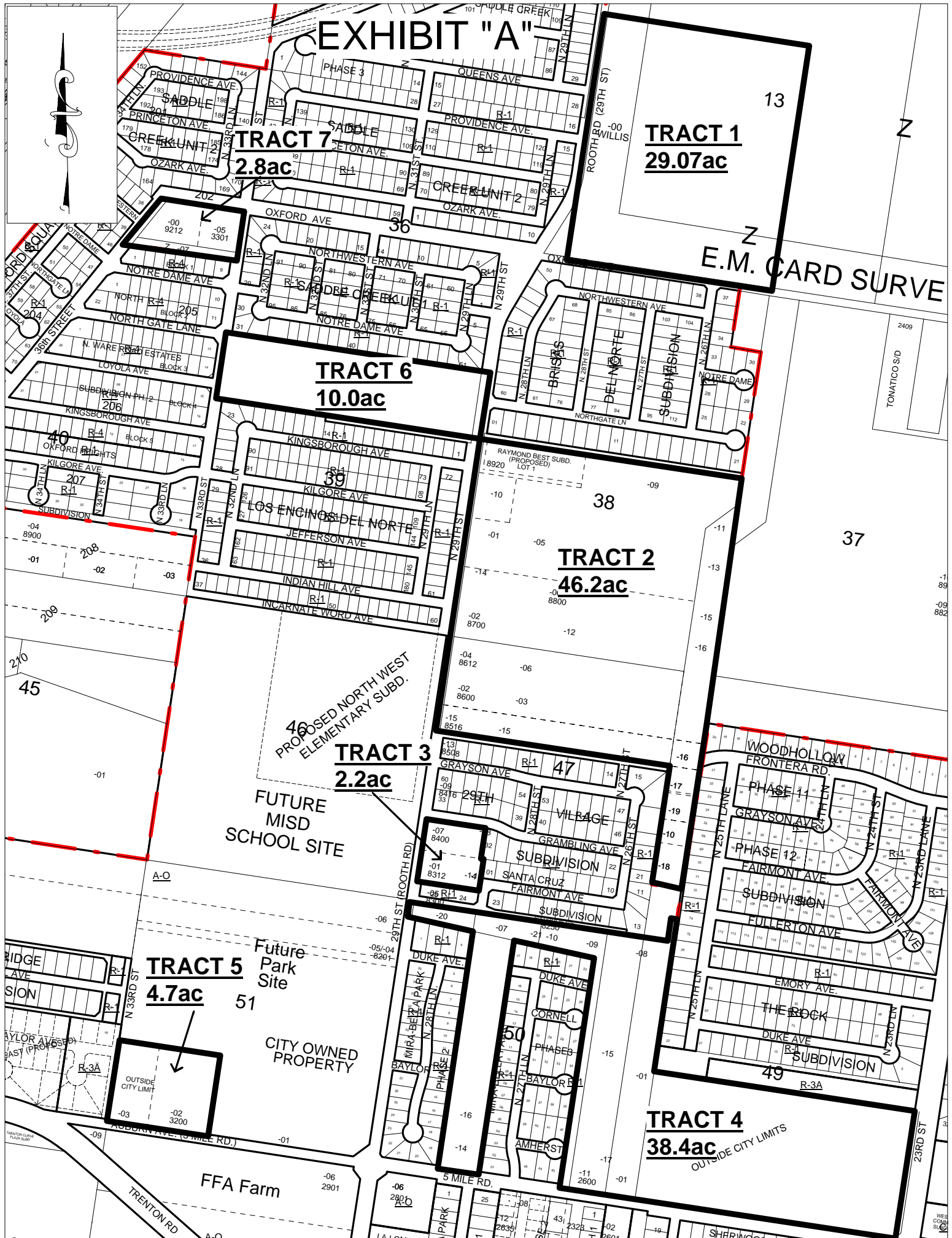
ATTEST:

Annette Villarreal, City Secretary

Approved as to form:

Kevin D. Pagan, City Attorney

EXHIBIT "A"



TRACT 7
2.8ac

TRACT 1
29.07ac

TRACT 6
10.0ac

TRACT 2
46.2ac

TRACT 3
2.2ac

TRACT 5
4.7ac

TRACT 4
38.4ac

E.M. CARD SURVEY

PROPOSED NORTH WEST
ELEMENTARY SUBD.
FUTURE
MISD
SCHOOL SITE

Future
Park
Site
CITY OWNED
PROPERTY

FFA Farm

OUTSIDE CITY LIMITS

